



Orford Mining

Qiqavik Site Visit

August 2019

TSXV: ORM

Disclaimer

Cautionary Statement Concerning Forward-Looking Statements

Neither the TSXV nor its Regulation Services Provider (as that term is defined in the policies of the TSXV) accepts responsibility for the adequacy or accuracy of this presentation.

This presentation contains "forward-looking information" including without limitation statements relating to the liquidity and capital resources of Orford and potential of one or more of the Qiqavik and West Raglan properties.

Forward-looking statements involve known and unknown risks, uncertainties and other factors which may cause the actual results, performance or achievements of Orford to be materially different from any future results, performance or achievements expressed or implied by the forward-looking statements. Factors that could affect the outcome include, among others: future prices and the supply of metals; the results of drilling; inability to raise the money necessary to incur the expenditures required to retain and advance the properties; environmental liabilities (known and unknown); general business, economic, competitive, political and social uncertainties; accidents, labour disputes and other risks of the mining industry; political instability, terrorism, insurrection or war; or delays in obtaining governmental approvals, failure to obtain regulatory or shareholder approvals. For a more detailed discussion of such risks and other factors that could cause actual results to differ materially from those expressed or implied by such forward-looking statements, refer to Orford's filings with Canadian securities regulators available on SEDAR at www.sedar.com.

Although Orford has attempted to identify important factors that could cause actual actions, events or results to differ materially from those described in forward-looking statements, there may be other factors that cause actions, events or results to differ from those anticipated, estimated or intended. Forward-looking statements contained herein are made as of the date of this presentation and Orford disclaims any obligation to update any forward-looking statements, whether as a result of new information, future events or results or otherwise, except as required by applicable securities laws.

The TSXV has neither approved nor disapproved the contents of this presentation.

Qualified Person and Quality Assurance and Quality Control

The disclosure of scientific and technical information contained in this presentation has been approved by Alger St-Jean, P.Geo, Vice President, Exploration of Orford, a Qualified Person under NI 43-101.

Samples reported in this presentation and indicated as grab, outcrop, sub-outcrop, boulders and float are grab samples. Grab samples are selective by nature and values reported may not be representative of mineralized zones. All drill intervals reported in this presentation are down-hole core lengths as true thicknesses cannot be determined with available information.

The work program at Qiqavik was supervised by Michelle Sciortino, P.Geo, Senior Project Geologist who is responsible for all aspects of the work, including the quality control/quality assurance program. On-site personnel at the project log and weigh all samples prior to sealing and shipping. Sample shipments are sealed and shipped to Techni-Lab, Sainte-Germaine-Boulé, Québec. All gold assays reported were obtained by either 350-g screen fire assay or standard 50-gram fire-assaying-AA finish or gravimetric finish (method 1A2-5 and 1A3-50) at. The 350-g screen assay method is selected by the site geologist or the lab when samples contain coarse gold or higher percentage of sulfide mineralization that may be associated with gold relative to surrounding intervals. All samples are also analyzed for multi-elements, including copper and silver, using a four-acid method with an ICP-EOS and ICP-MS finish at Tech-labs affiliated Actlabs in Ancaster, Ontario. Overlimits were analyzed by peroxide fusion with ICP-EOS finish. Drill program design, Quality Assurance/Quality Control ("QA/QC") and interpretation of results is performed by qualified persons employing a QA/QC program consistent with NI 43-101 and industry best practices. Standards and blanks are inserted at a minimum of 10% and 5% for core and grab samples respectively for QA/QC purposes in addition to those inserted by the lab. A subset of samples has not yet been sent for a verification assay at another lab.

Techni-Lab Laboratory, is a subsidiary of Act Labs, is accredited (n. 707) by the Standards Council of Canada and found to comply with the requirements of ISO/IEC 17025:2005 (CAN-P-4E) and CAN-P-1579.

The technical information disclosed herein in respect of the Qiqavik Property is based on the independent report of Clement Dombrowski, P.Geo and Sylvain Desbiens P.Geo. titled "NI 43-101 Technical Report on Qiqavik Project, Northern Quebec, Canada" effective September 14, 2017, and on Orford Mining's press releases available on SEDAR. The information disclosed herein in respect of the West Raglan Property is based on the independent report of Clement Dombrowski, P.Geo. titled "NI 43-101 Technical Report on West Raglan Project, Northern Quebec, Canada" effective February 20, 2017.

Why Orford Mining?

Investment Highlights



New strategic investor

- Recently completed C\$2.3M equity financing whereby Alamos Gold became a 19.3% shareholder
- A second equity financing announced for \$C2.35 million in June 2019, to close in early July 2019.
- Widely-held ownership with several strategic shareholders (Alamos, Dundee, RNC Minerals)

Qiqavik Project: potential discovery of new gold district

- Property covers 316 km² of the highly prospective and underexplored Cape Smith Belt
- Identified a 40-km long Qiqavik Break Shear Zone, which remains largely unexplored
- Discovered 11 large gold-mineralized areas
- 2018 drill program discovered up to 24.6 m thick gold mineralization at Interlake Area

West Reglan: potential for multiple large, high grade Ni-Cu-PGE deposits

- Advanced stage Ni-Cu-PGE exploration project covering nearly 470 km² in the Cape Smith Belt
- Identified outcropping mineralization over +35 km of strike, many zones have very limited testing
- Frontier Zone: similar geology to Glencore's Reglan Mine (MI&I: 35Mt at 3.2% Ni, 0.93% Cu and 3.2 g/t PGE¹) with high-grade (2-3% Ni, 3+ g/t PGE) mineralized lens clusters over a 2,500 m strike

Safe, proven mining jurisdiction

- Projects located in Quebec, which was the 4th ranked jurisdiction in the world for mining investment attractiveness according to 2018 Frasier Institute survey
- Success of mines such as Meadowbank, Meliadine and Reglan demonstrates viability of discovering and developing large-scale mining projects in northern Canada

Project Portfolio

Advanced-Stage Exploration Projects in Northern Quebec

Over 775 km² land position in the highly prospective and underexplored Cape Smith Belt
Quebec: 4th ranked jurisdiction in the world for mining investment attractiveness according to 2018 Frasier Institute survey

Qiqavik Project (100%)

- ~316 km² property in the upper Cape Smith Belt
- 40 km long Qiqavik Break Shear Zone
- Discovered 11 large gold-mineralized areas
- 2018 drill program (8 holes, 1,211 m) discovered up to 24.6 m thick mineralization at Interlake Area

Meadowbank (Agnico Eagle)

Commercial production in 2010. 3.5 g/t Au reserve grade

Hope Bay (TMAC)

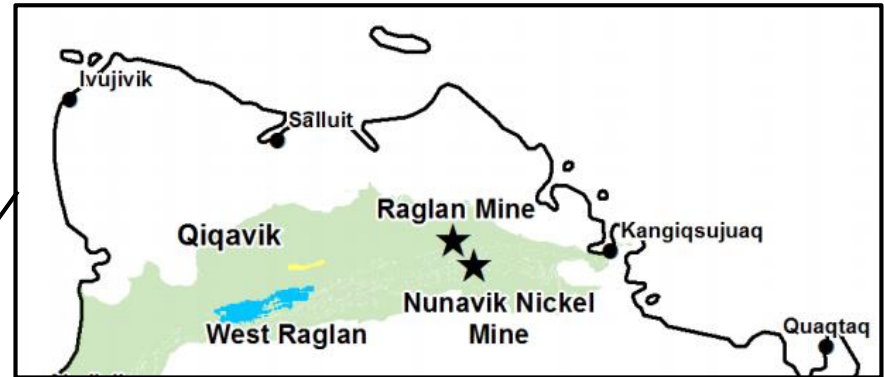
Commercial production in 2017. 7.7 g/t Au reserve grade

Meliadine (Agnico Eagle)

Commercial production in May 2019. 7.0 g/t Au reserve grade

Reglan (Glencore)

Produces 37,000 tonnes per year of nickel in concentrate
One of the richest base metal mines in the world



West Raglan Project (100% Interest)

- ~470 km² property in the lower Cape Smith Belt
- Traced outcropping sulphide mineralization over +35 km strike
- Frontier Zone: identified five high-grade (2-3% Ni, 3+ g/t PGE) mineralized lens clusters over a 2,500 m strike
- Frontier Zone has comparable geology to Glencore's Raglan Mine

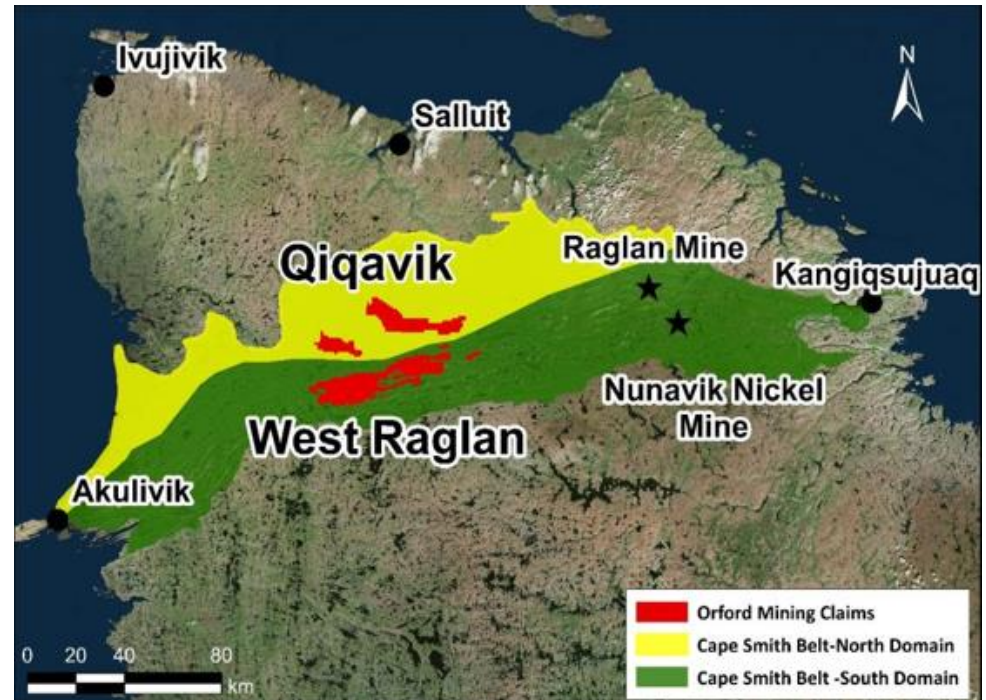
Following a successful track record of discovering and developing multi-million ounce gold projects in Northern Canada

Qiqavik Project

Large, Highly Prospective Land Package in an Underexplored Emerging Gold District

40-km long Qiqavik Break Shear Zone remains largely unexplored with potential for multiple large gold deposits

- 100% interest in ~316 km² of highly prospective gold properties in northern Quebec
- ~60 km from Glencore's world-class Raglan Mine
- The parallel ultramafic "Raglan Belt" has yielded world-class nickel deposits, but the northern volcano-sedimentary portion of the Belt remains virtually unexplored
- Property covers the 40 km long Qiqavik Break Shear Zone and part of the Cape Smith Belt
- Gold districts with similar tectonic and age setting to the Cape Smith Belt include¹:
 - Flin Flon/Snow Lake, Canada
 - Ashanti Belt, West Africa
 - Tanami Goldfields, West Australia
 - Tapajos-Parima Belt, Brazil
- 11 significant mineralized areas discovered
 - Includes Interlake, Esperance, Esperance West, Horizon, Aurora, Aurora West, Gerfaut, Gerfaut South, ABG Zone, Focused Intrusive and Central Qiqavik



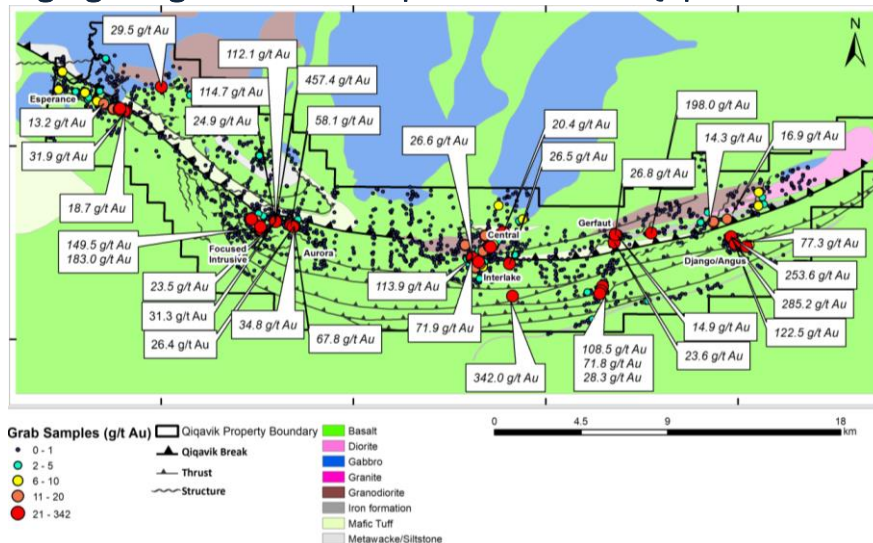
1. This information is not necessarily indicative of the mineralization on Orford Mining's properties

Qiqavik Project

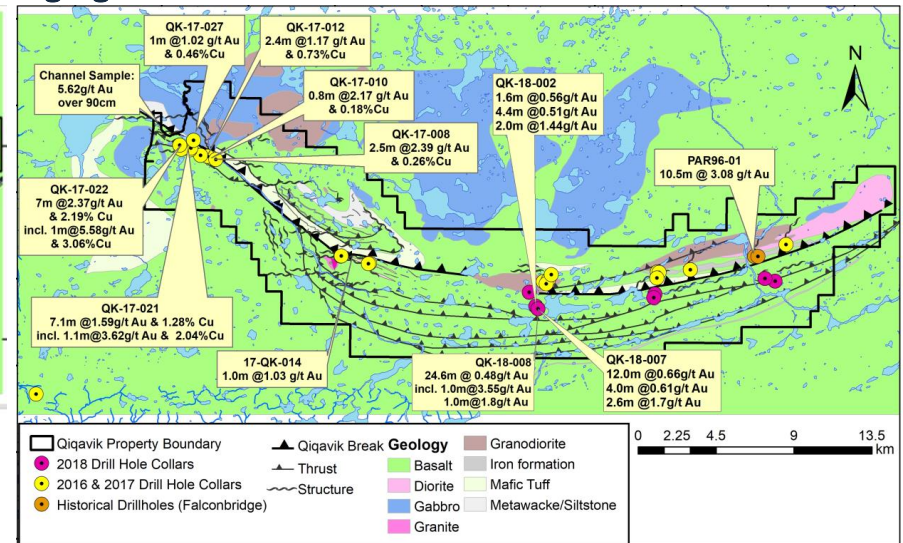
Summary of 2017-2018 Exploration Programs

	2016	2017	2018
Exploration activities	<ul style="list-style-type: none"> Initial IP survey at Gerfaut Prospecting, mapping, surface rock sampling and till sampling Drilled 550 m (6 holes) at Gerfaut 	<ul style="list-style-type: none"> 23-hole, 2,723 m drill program 721 line-km of airborne magnetic surveys 105.6 line-km of IP surveying Prospecting, mapping, surface rock sampling and till sampling 	<ul style="list-style-type: none"> 6,067 line-km (50 m spacing) airborne magnetic survey over the entire property 541 surface samples, of which 34 surface samples had values >2 g/t gold 8-hole, 1,211 m drill program at Interlake Geological mapping, prospecting and ground VLF geophysics
Key Findings	<ul style="list-style-type: none"> IP survey identified 10 targets Extended strike length of Qiqavik Break from 15 km to 40 km Discovered surface gold at Aurora, Esperance and Esperance West High grade surface gold samples ranging from 26 g/t Au to 189 g/t Au 	<ul style="list-style-type: none"> Intersected up to 13.7 g/t at Aurora, up to 8.8 g/t Au Esperance and 5.6 g/t Au at Esperance West Five new surface discoveries at Aurora Central, Gerfaut South, Central Qiqavik, Horizon, and Focused Intrusive 	<ul style="list-style-type: none"> 34 surface samples over 2 g/t Au, including 342 g/t Au and 149.5 g/t Au Drill intercepted up to 24.6 m thick gold mineralization at the Interlake Area Expanded dimensions of surface showings at Focused Intrusive, Gerfaut South, and Interlake

Highlighted gold surface samples over +40 km Qiqavik Break

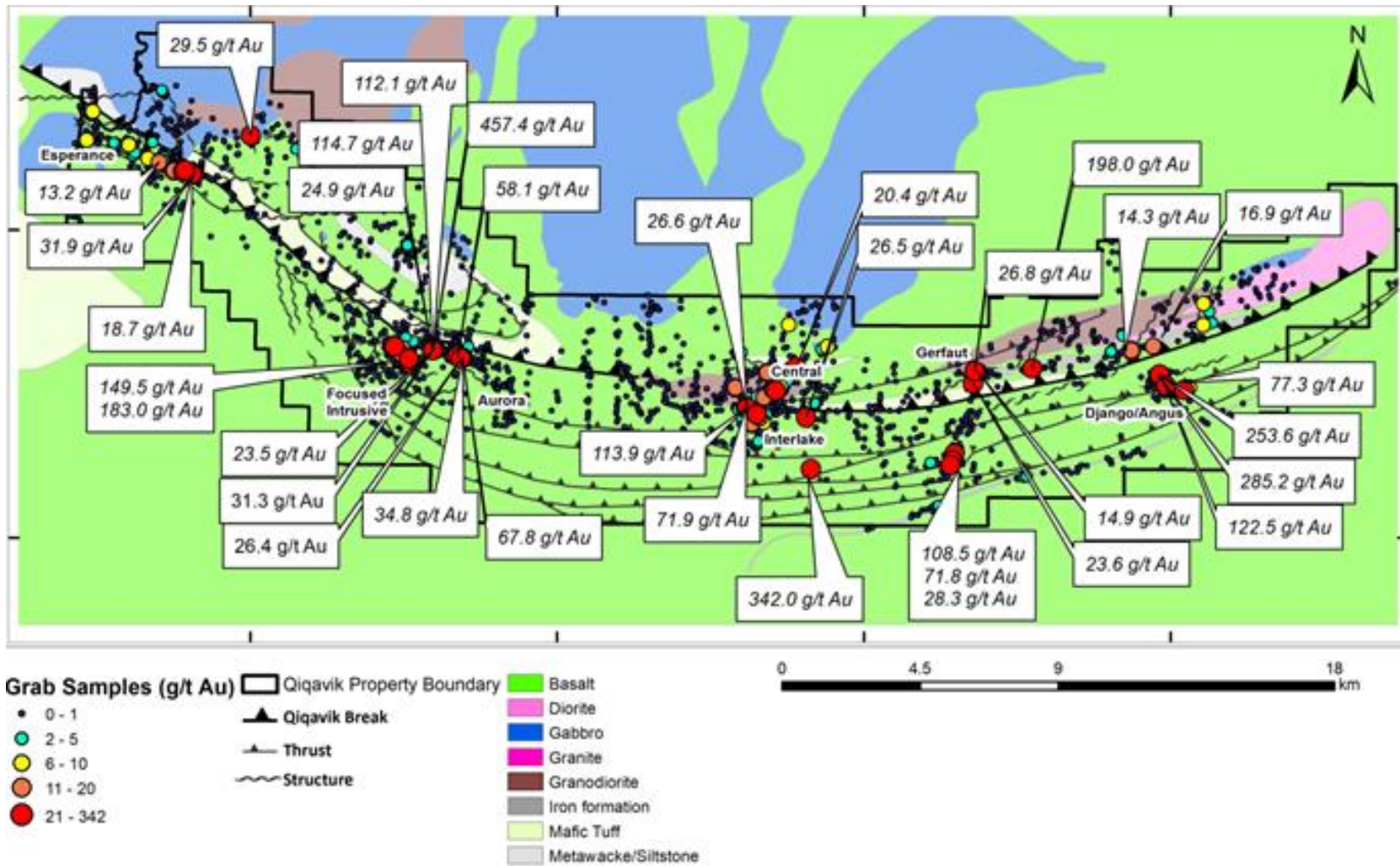


Highlighted 2017 - 2018 drill results



Qiqavik High Grade Gold Showings

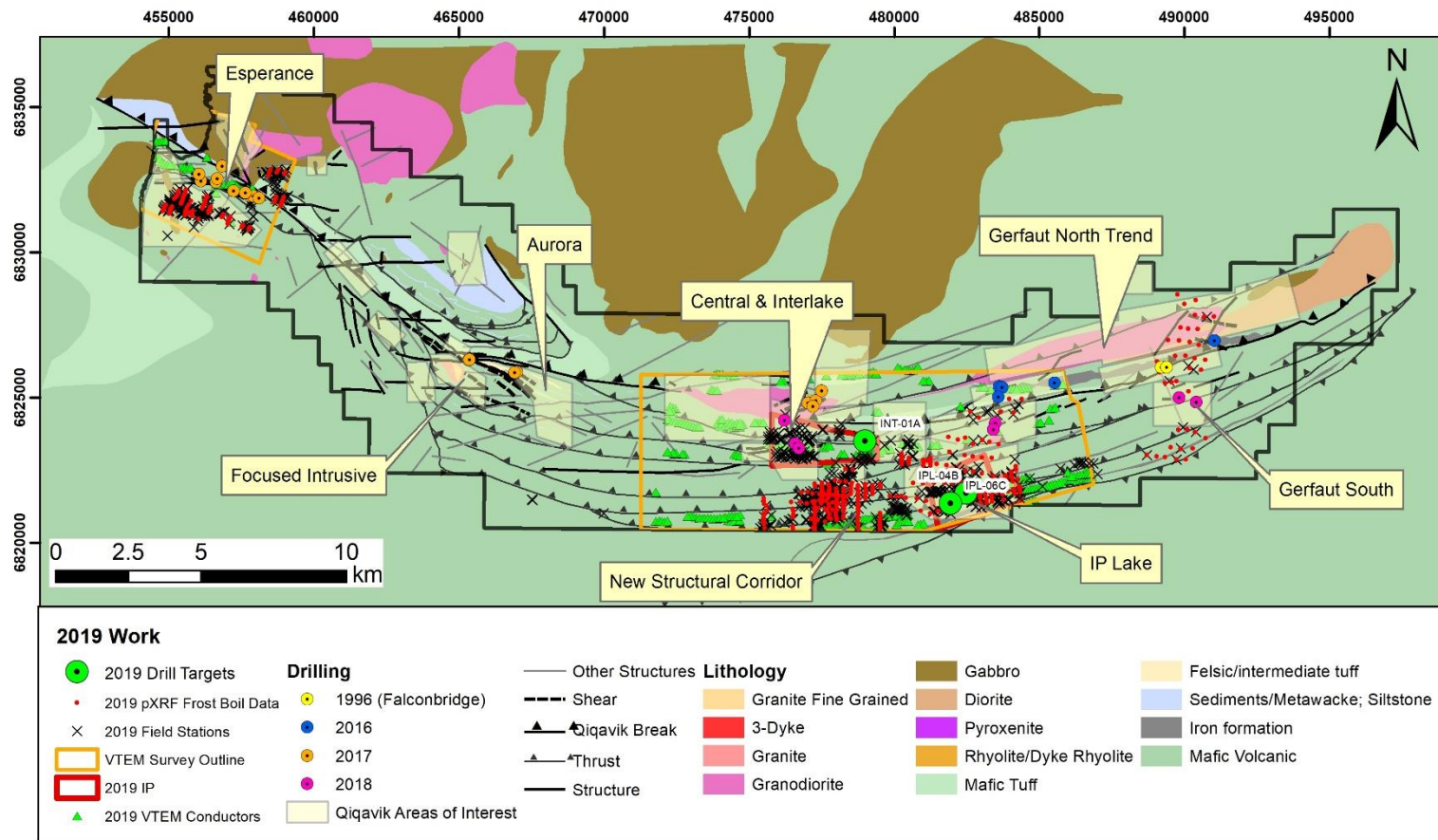
Gold Showings at surface are prolific across the 40 km + property



Note that grab samples are selective by nature and values reported may not be representative of mineralized zones. Drill intervals reported in this presentation are down-hole core lengths as true thicknesses cannot be determined with available information.

Qiqavik Project

A lot of smoke but where's the fire?



2019:

- Looking for thick structural corridors or packages
- Focus details on a few specific areas
- Understand Transport distance at various parts of the property
- Combine VTEM, IP and Mapping to generate high quality targets
- Focus on Interlake, IP Lake and Esperance.

To Date Aug 8:

- Frost Boils: 289
- Grab: 573
- Large Tills: 118
- 1128 I-km VTEM
- 38.4 I-km IP

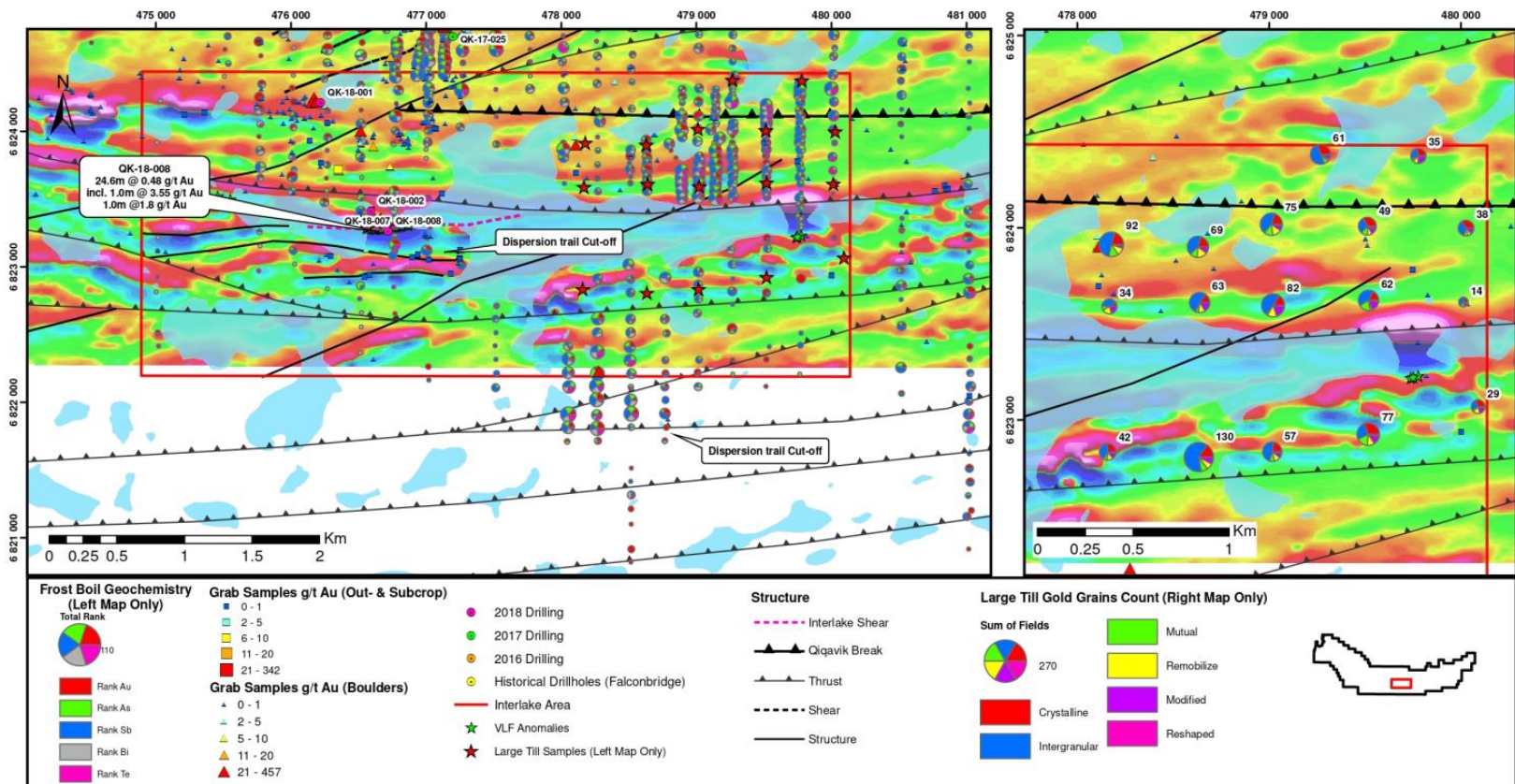
Live daily XRF and following up-ice

Qiqavik Project

Interlake Structural Package

Results identified numerous new targets to follow-up in 2019 exploration program

- Frost boil sampling and the resulting dispersion trail patterns have been an essential tool to locate bedrock sources of gold mineralization at Qiqavik
- Identified multiple strong dispersion trains originating at shear zones

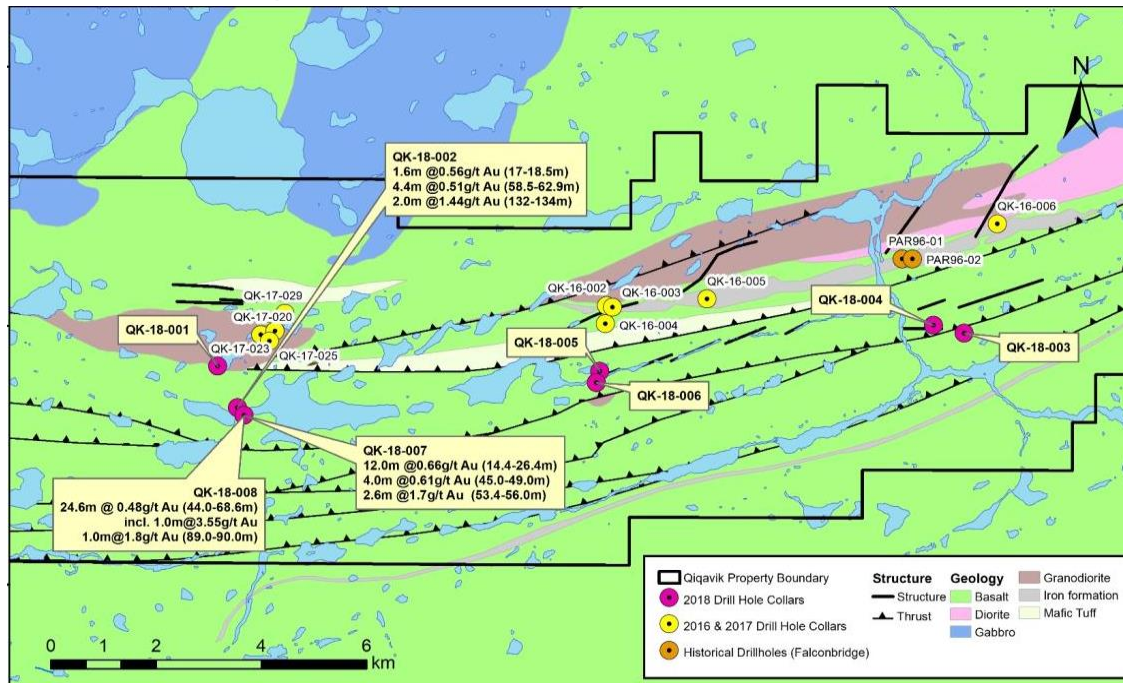


Interlake Area - 2018 Summer Drill Program (8 holes, 1,211 m)

Intersected a thick sequence of gold mineralization along a laterally extensive structure in the Interlake Area

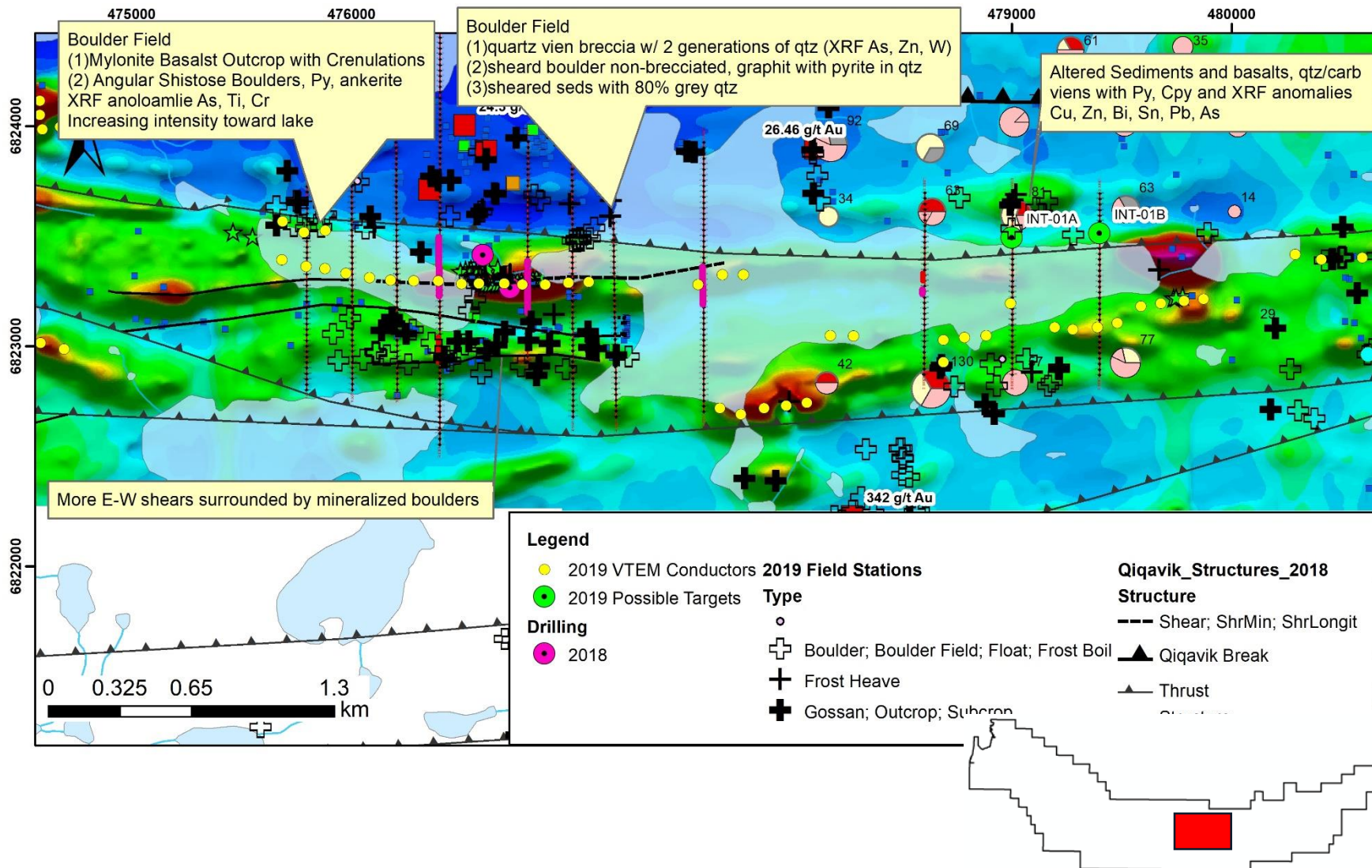
- Discovered up to 24.6 m thick sequence of gold mineralized quartz-carbonate veining in three drill holes at the Interlake Area
- Intersected four gold-bearing structures along a 13 km long chain of E-W trending lakes and rivers
 - Drill program consisted of three boreholes testing two parallel E-W conductors over a 310 m strike length between two shallow lakes
 - Shear zones are sub-vertical, east-trending structures and their magnetic signature suggests that they may extend for at least another 1 km to the east and 800 m to the west, under shallow lakes
 - Confirmed extension of the shear zone to a vertical depth of at least 130 m
 - A strong, multi-element, till anomaly is also present 3 km east of the drilled sector

Map of 2018 Drilling at the Interlake Area

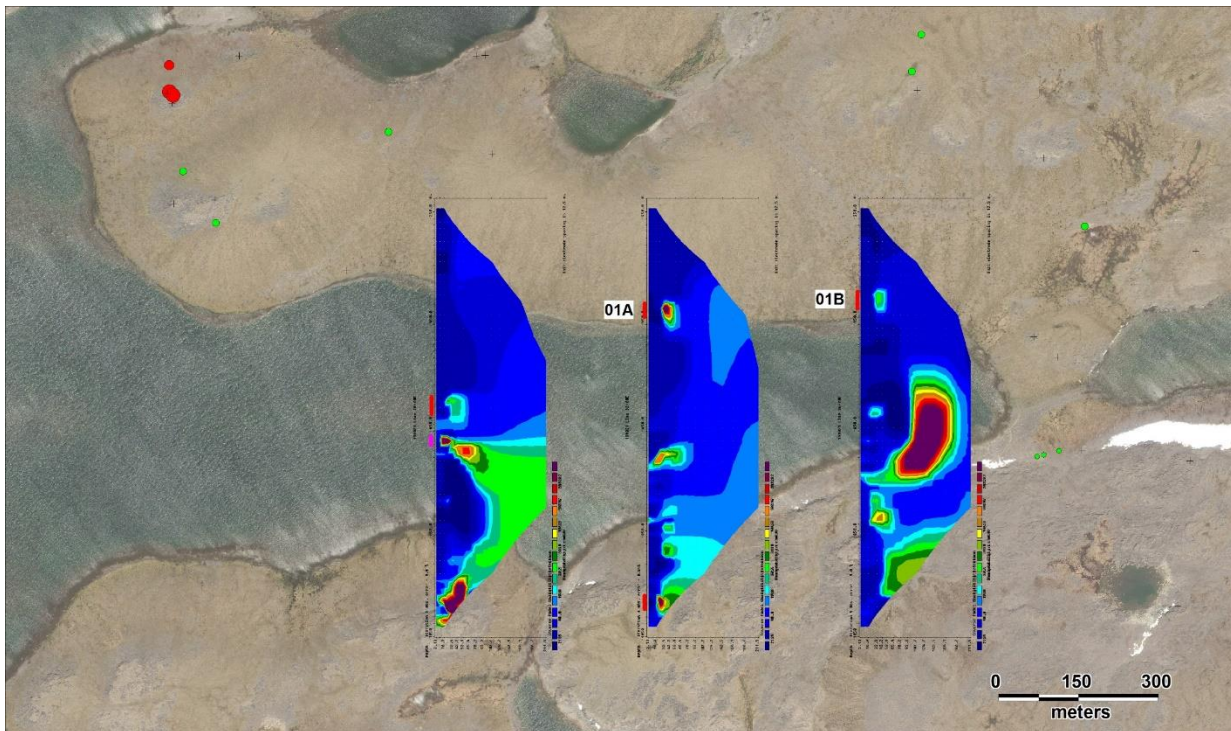


Qiqavik Project

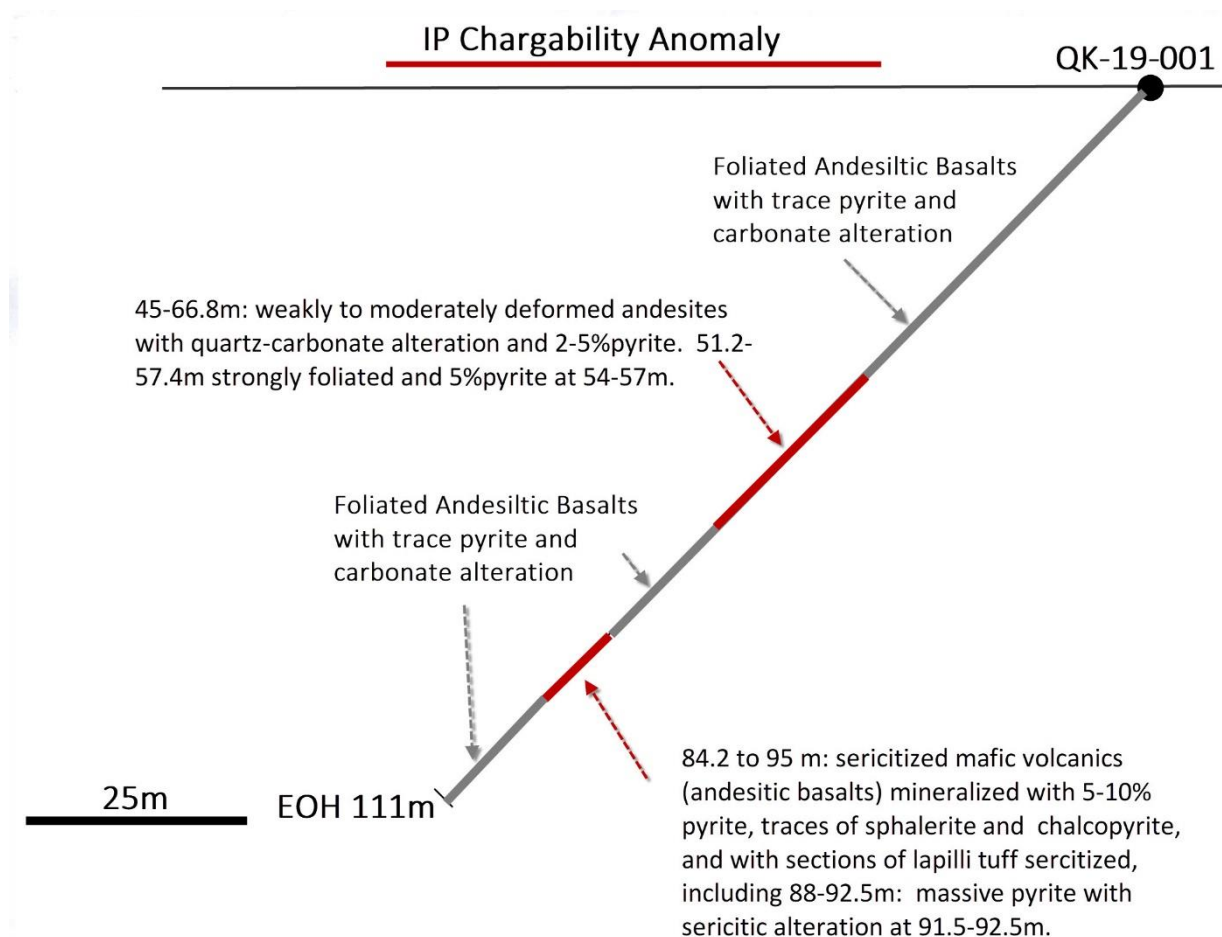
Interlake 2019



19-QK-001: Eastern part of the Interlake IP grid was completed first, drilling started with testing target INT-01A



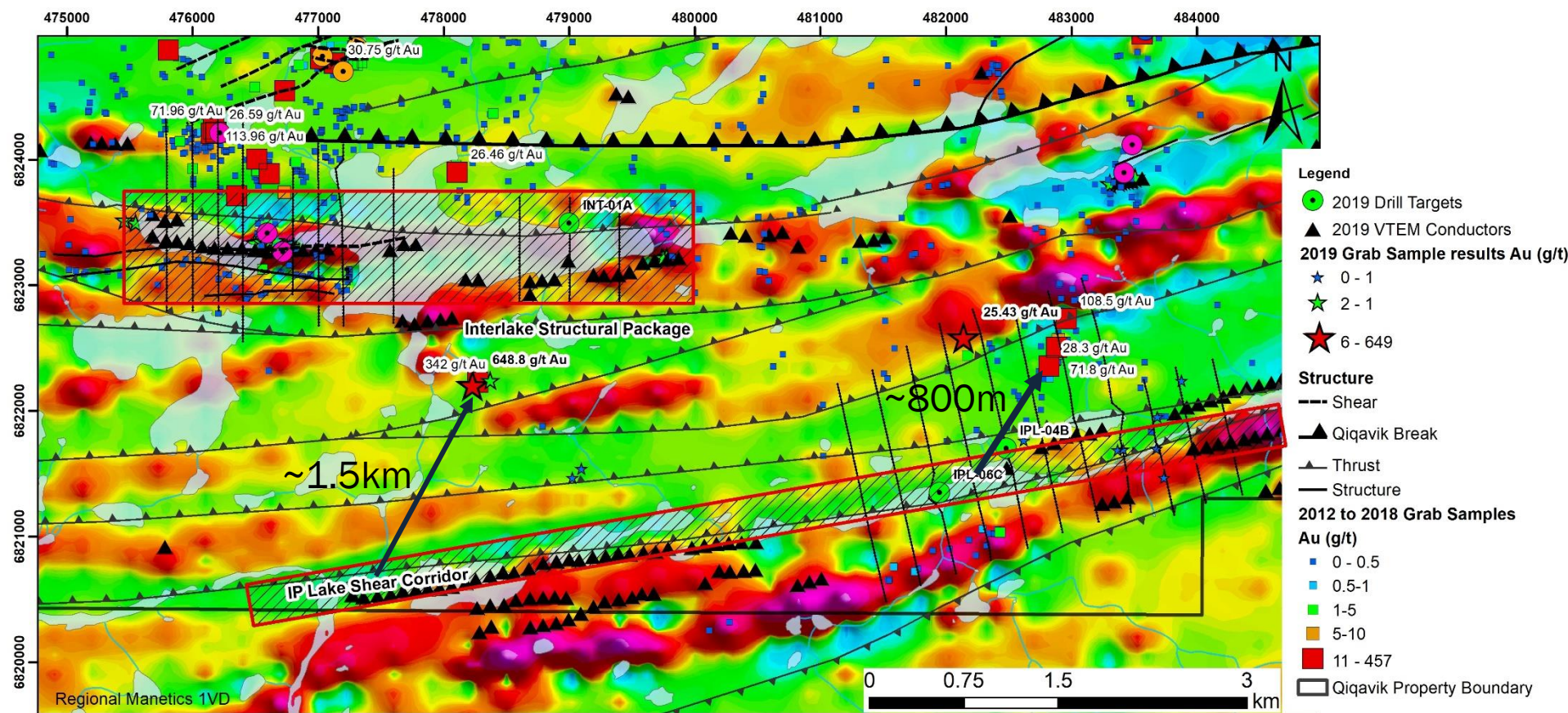
Future Targeting Map for batch 1 and remaining collected



Additional targets to be Generated at Interlake based on incoming IP

Qiqavik Project

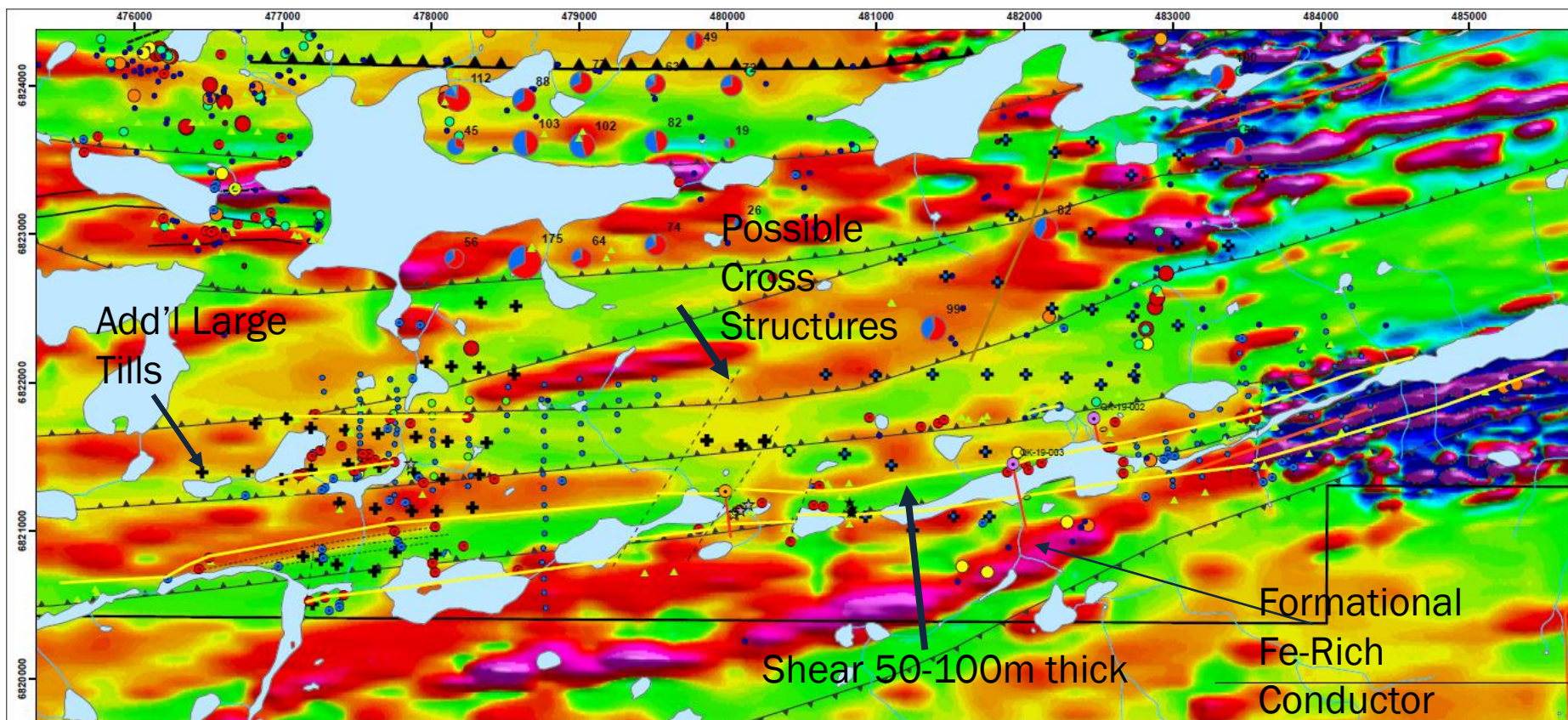
IP Lake Shear Corridor



- Batch 1 Grab Rush Results 648.8g/t and 25.43 g/t Au (angular boulders)
- Possible distance to Source ~1km
- Additional Large Tills Taken around IP Lake Shear Corridor

Qiqavik Project

IP Lake Shear Corridor



Legend

Drillhole_QK2019

As_Concent

- 0 - 15
- 16 - 20
- 21 - 30
- 31 - 36
- Proposed drill hole_collar

Field_Stations_2019

Main_Struc

Main_Textu

Sample_Num

Sample_Num

Sample_Num

M15 / ankerite tuff ((XRF Au bearing)

Proposed drill hole_trace

Field_Stations_2019

Main_Struc

Main_Textu

Sample_Num

Sample_Num

Sample_Num

Sample_Num

Sample_Num

Sample_Num

Sample_Num

Id

Id

Id

Id

Id

Id

Id

Id

Id

Id

Id

Id

Id

OR_Intact_

OR_Modifi

O_Remodel

Grab_Geochemistry

Au_ppm_Fin

Au_ppm_Fin

Au_ppm_Fin

Au_ppm_Fin

Au_ppm_Fin

Au_ppm_Fin

Au_ppm_Fin

Au_ppm_Fin

Au_ppm_Fin

OR_Intact_

OR_Modifi

O_Remodel

Grab_Geochemistry

Au_ppm_Fin

Au_ppm_Fin

Au_ppm_Fin

Au_ppm_Fin

Au_ppm_Fin

Au_ppm_Fin

Au_ppm_Fin

Au_ppm_Fin

Au_ppm_Fin

OR_Intact_

OR_Modifi

O_Remodel

Grab_Geochemistry

Au_ppm_Fin

Au_ppm_Fin

Au_ppm_Fin

Au_ppm_Fin

Au_ppm_Fin

Au_ppm_Fin

Au_ppm_Fin

Au_ppm_Fin

Au_ppm_Fin

OR_Intact_

OR_Modifi

O_Remodel

Grab_Geochemistry

Au_ppm_Fin

Au_ppm_Fin

Au_ppm_Fin

Au_ppm_Fin

Au_ppm_Fin

Au_ppm_Fin

Au_ppm_Fin

Au_ppm_Fin

Au_ppm_Fin

OR_Intact_

OR_Modifi

O_Remodel

Grab_Geochemistry

Au_ppm_Fin

Au_ppm_Fin

Au_ppm_Fin

Au_ppm_Fin

Au_ppm_Fin

Au_ppm_Fin

Au_ppm_Fin

Au_ppm_Fin

Au_ppm_Fin

OR_Intact_

OR_Modifi

O_Remodel

Grab_Geochemistry

Au_ppm_Fin

Au_ppm_Fin

Au_ppm_Fin

Au_ppm_Fin

Au_ppm_Fin

Au_ppm_Fin

Au_ppm_Fin

Au_ppm_Fin

Au_ppm_Fin

OR_Intact_

OR_Modifi

O_Remodel

Grab_Geochemistry

Au_ppm_Fin

Au_ppm_Fin

Au_ppm_Fin

Au_ppm_Fin

Au_ppm_Fin

Au_ppm_Fin

Au_ppm_Fin

Au_ppm_Fin

Au_ppm_Fin

OR_Intact_

OR_Modifi

O_Remodel

Grab_Geochemistry

Au_ppm_Fin

Au_ppm_Fin

Au_ppm_Fin

Au_ppm_Fin

Au_ppm_Fin

Au_ppm_Fin

Au_ppm_Fin

Au_ppm_Fin

Au_ppm_Fin

OR_Intact_

OR_Modifi

O_Remodel

Grab_Geochemistry

Au_ppm_Fin

Au_ppm_Fin

Au_ppm_Fin

Au_ppm_Fin

Au_ppm_Fin

Au_ppm_Fin

Au_ppm_Fin

Au_ppm_Fin

Au_ppm_Fin

OR_Intact_

OR_Modifi

O_Remodel

Grab_Geochemistry

Au_ppm_Fin

Au_ppm_Fin

Au_ppm_Fin

Au_ppm_Fin

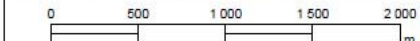
Au_ppm_Fin

Au_ppm_Fin

Au_ppm_Fin

Au_ppm_Fin

Au_ppm_Fin



1:24 908



ORFORD MINING INC.
Project: QIQAVIK

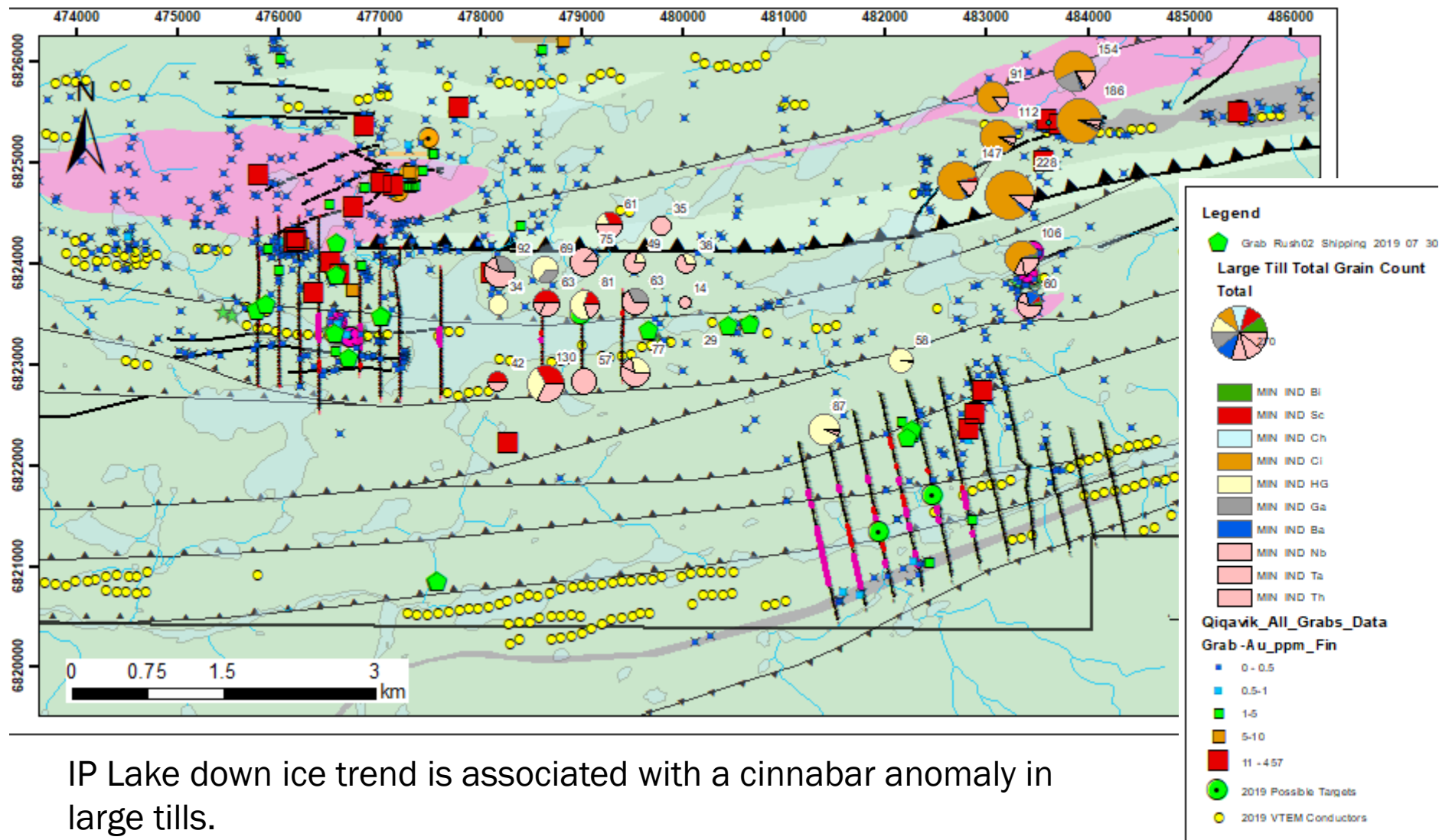
Geological observations at Highway Shear and drillhole proposal over MAG VD1 compilation

SNRC/NTS: 35G11
UTM, Zone 18, NAD83
Draw: Jonathan Lavoie Ing.
August 2019 Sheet size: 11"x17"

ios services
GÉOSCIENTIFIQUES INC.

Qiqavik Project

Large Tills To Date

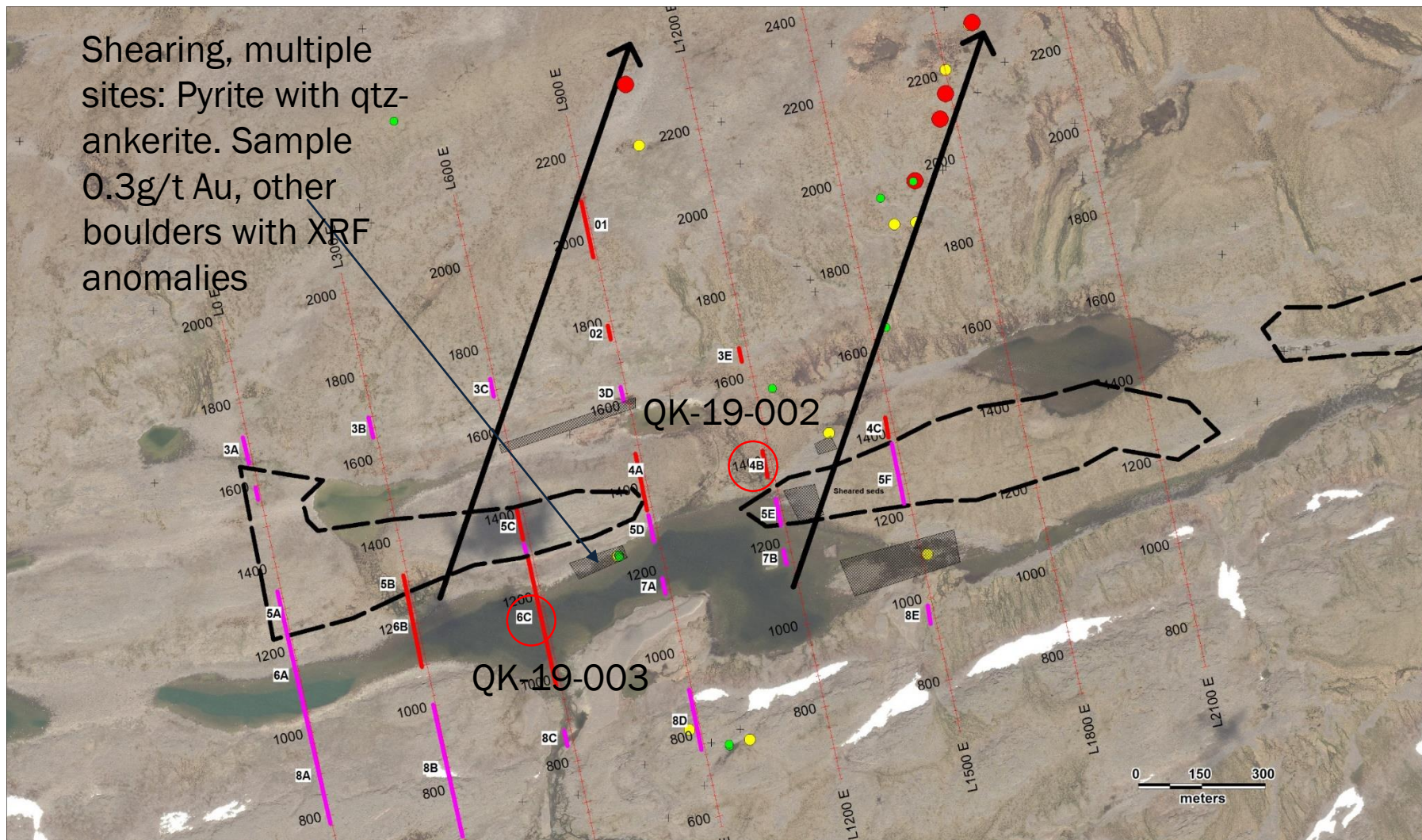


IP Lake down ice trend is associated with a cinnabar anomaly in large tills.

Qiqavik Project

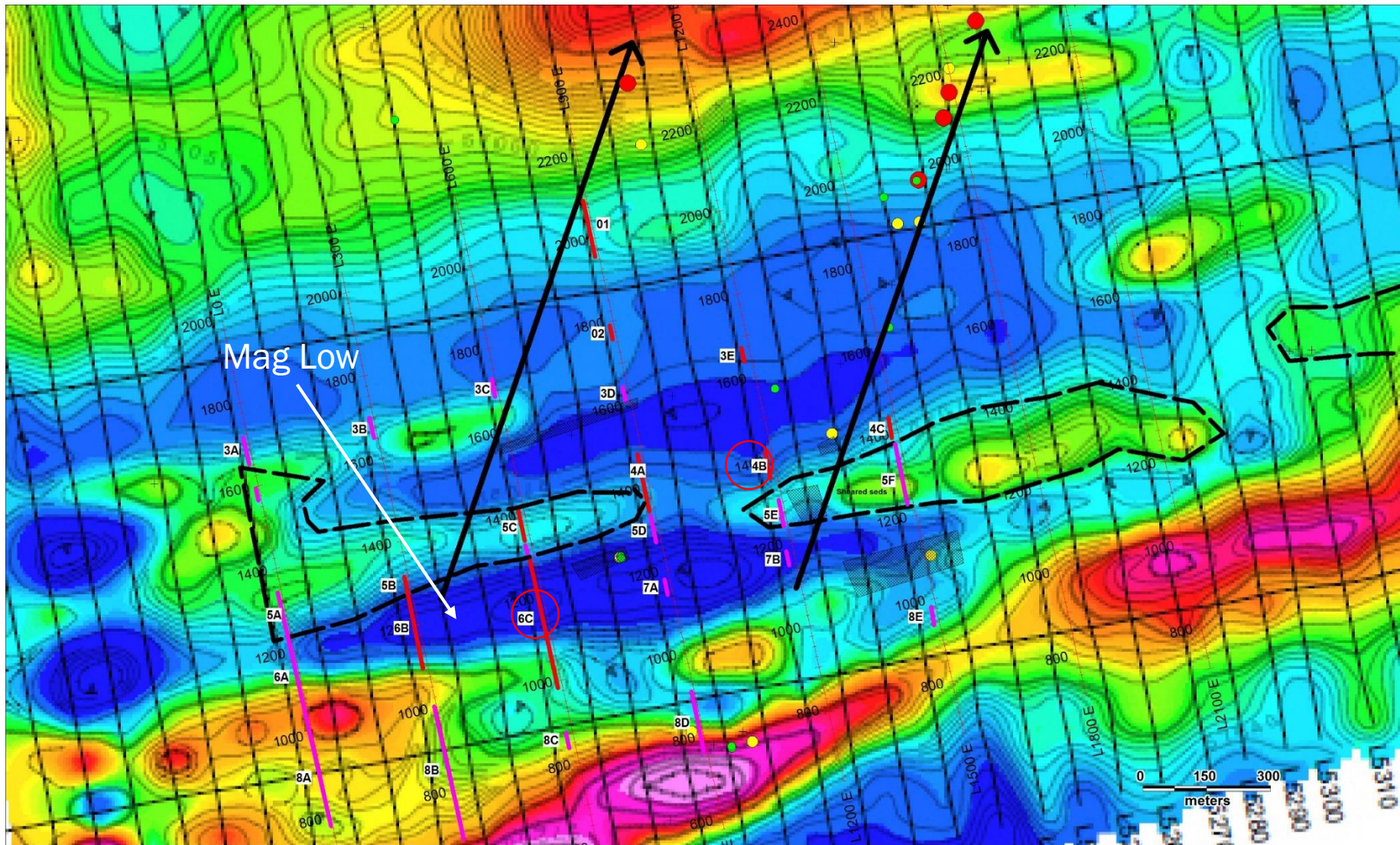
IP Lake

Shearing, multiple sites: Pyrite with qtz-ankerite. Sample 0.3g/t Au, other boulders with XRF anomalies

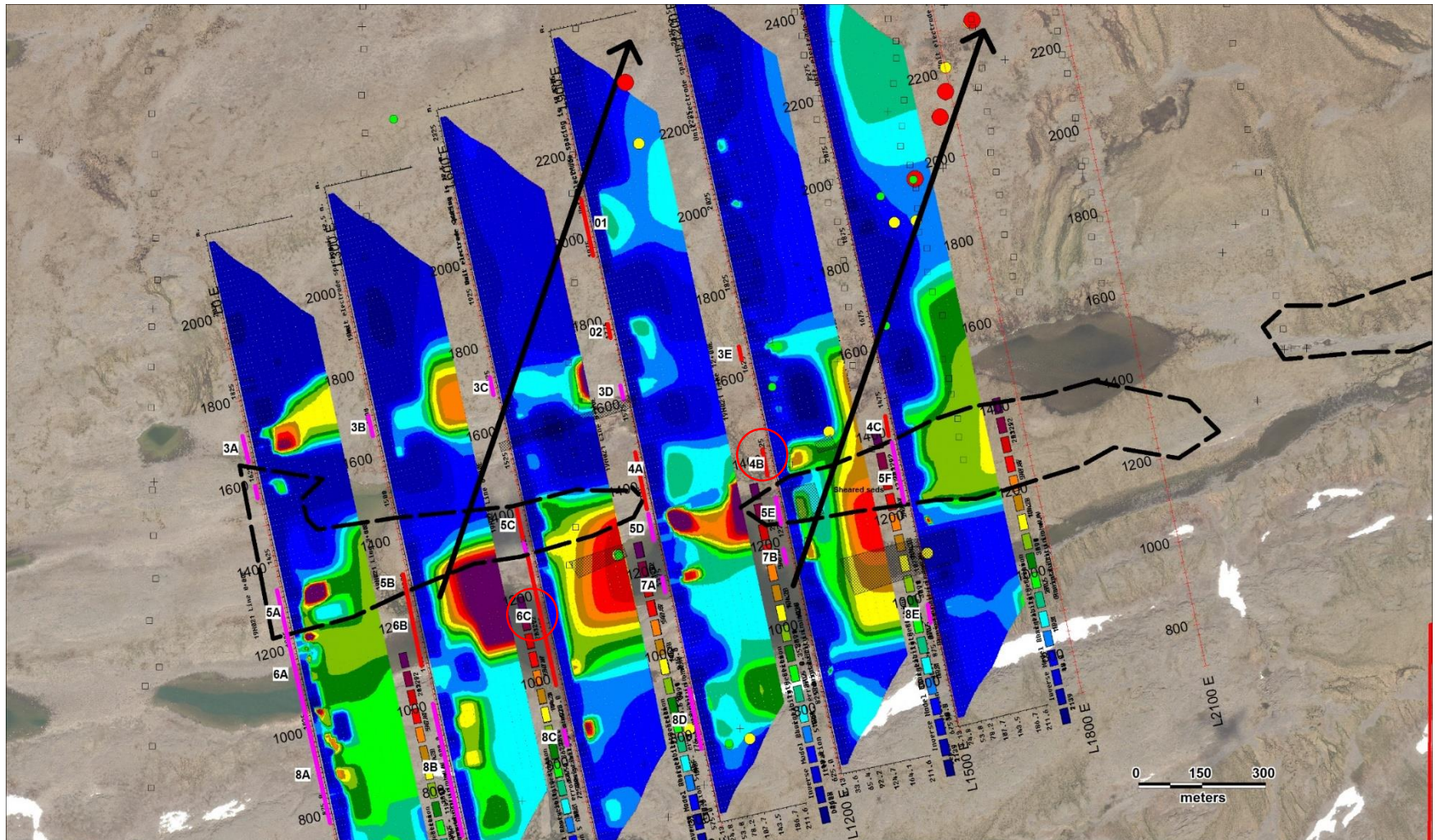


Qiqavik Project

IP Lake Shear Corridor

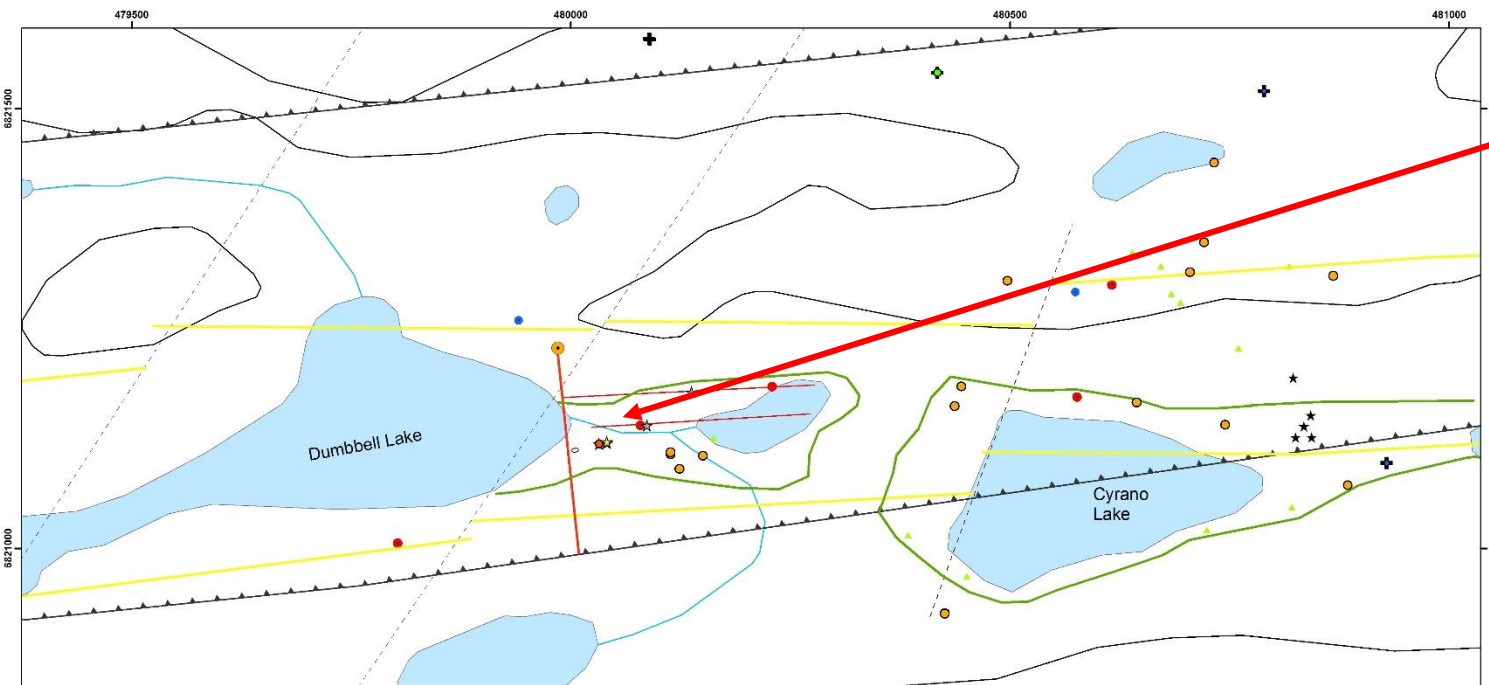


Chargeability

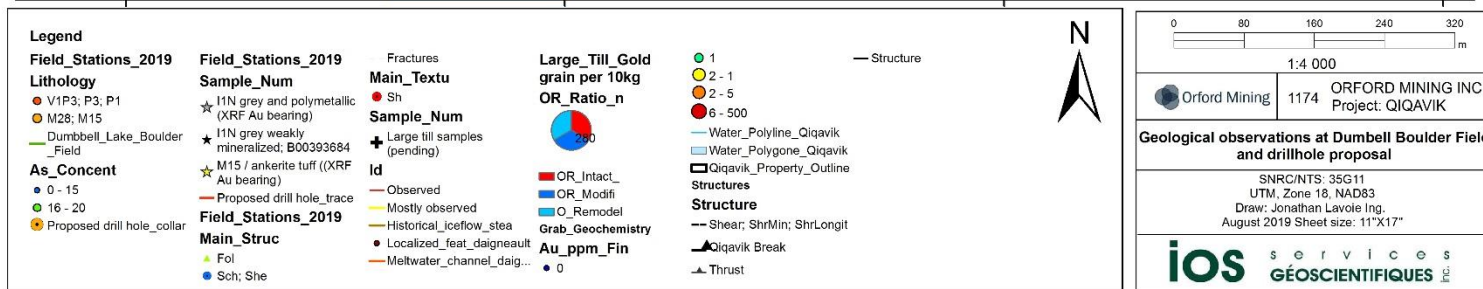


Qiqavik Project

Additional Possible Targets



VG identified in boulders within the IP Lake Shear Corridor to the east of dumbbell lake



Qiqavik Project

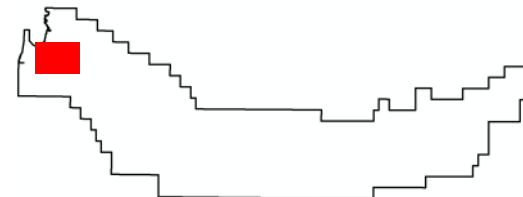
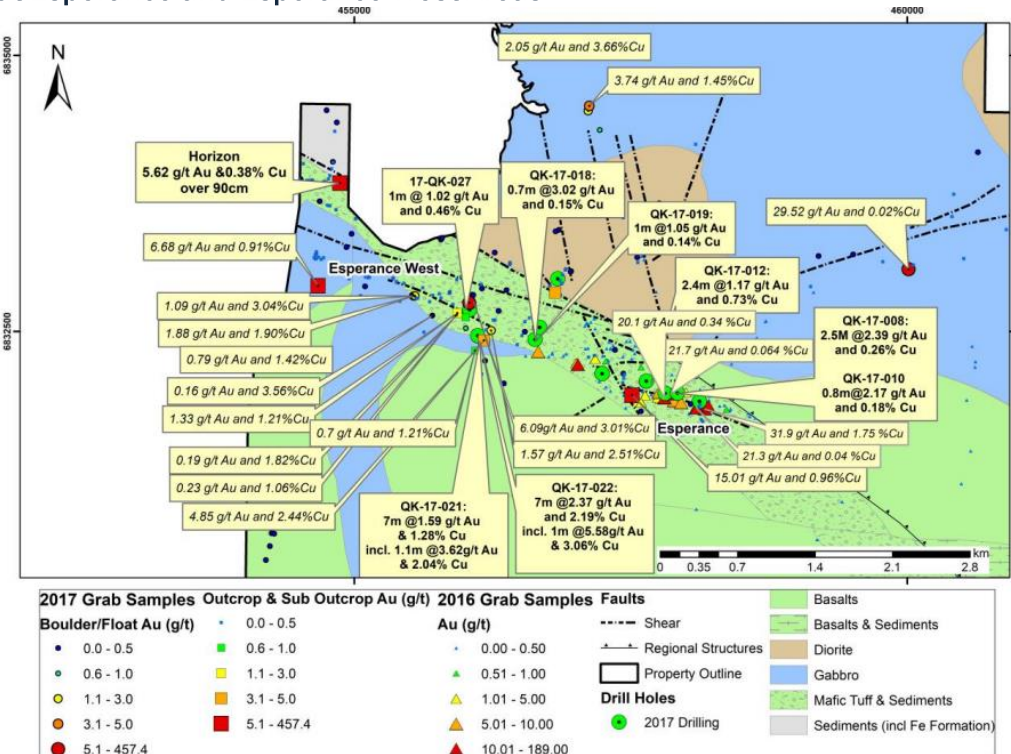
Esperance and Esperance West

- Gold mineralization drill tested at Esperance along 300 m of a 1.3 km structure, and at Esperance West along 650 m of a 2.0 km long structure
- 2017 drill results include 2.5 m at 2.39 g/t Au and 0.26% Cu
- Polymetallic mineralized trend continues at least 1.0 km west of Esperance West drilling
 - 2017 Horizon discovery yielded 5.67 g/t Au over 0.9 m in a channel sample

Drill hole locations and significant surface samples from 2017 program at Esperance and Esperance West Areas

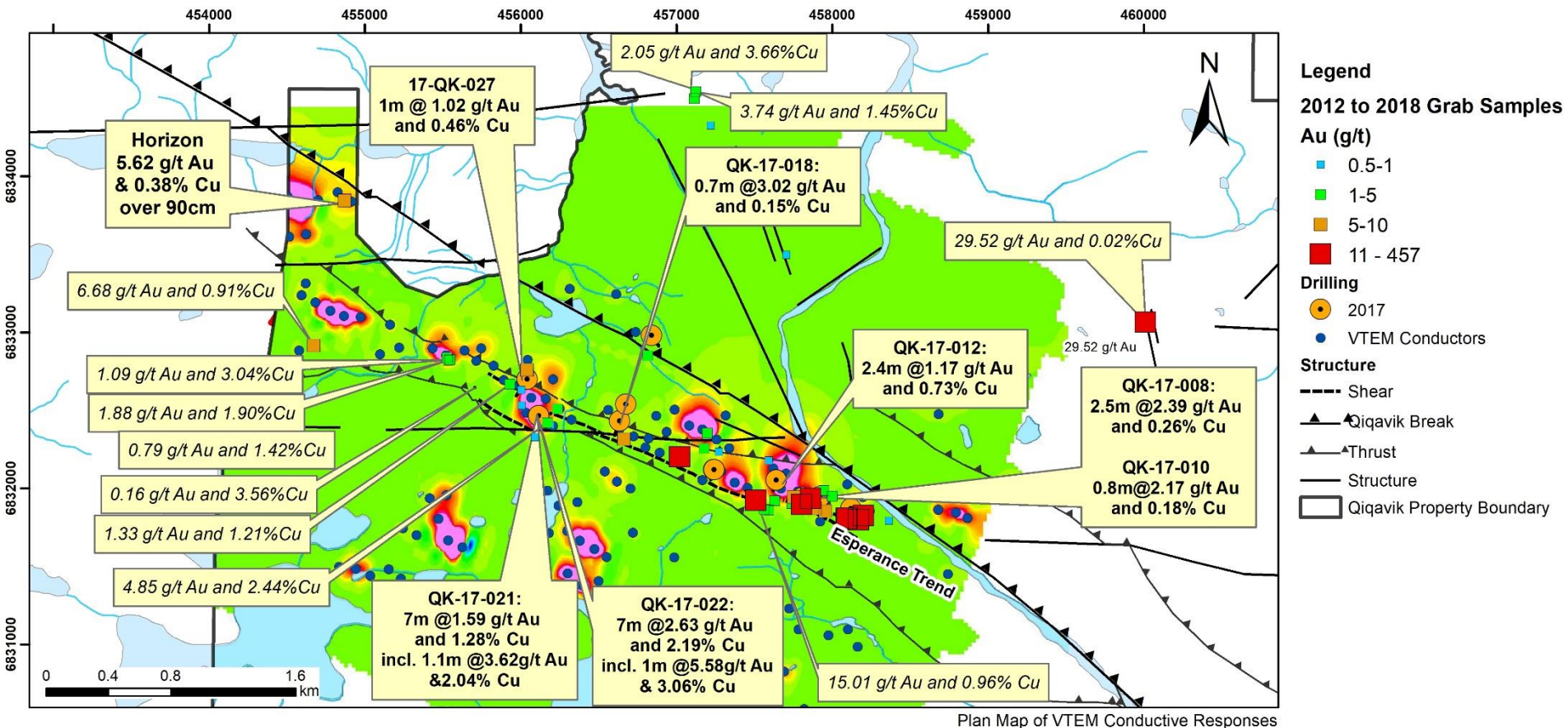
2017 Drill Results at Esperance and Esperance West

Hole ID	From (m)	To (m)	Length (m)	Gold Grade (g/t)	Copper Grade (%)
Esperance Zone					
QK-17-008	17.5	20.0	2.50	2.39	0.26
QK-17-010	32.4	33.2	0.76	2.17	0.18
QK-17-011	30.0	31.5	1.50	1.62	0.34
Including	30.9	31.5	0.60	3.35	0.57
QK-17-012	72.8	75.2	2.36	1.17	0.73
QK-17-014	68.0	69.0	1.00	1.03	0.01
Esperance West Zone					
QK-17-019	94.0	95.0	1.00	1.05	0.14
QK-17-021	32.0	39.1	7.10	1.59	1.28
including	33.0	34.1	1.10	3.62	2.04
QK-17-021	45.0	46.5	1.51	4.65	0.15
QK-17-022	28.0	35.0	7.00	2.37	2.19
Including	33.0	34.0	1.00	5.58	3.06
QK-17-022	59.0	60.0	1.00	4.75	0.10
QK-17-022	54.3	55.5	1.18	0.73	0.54
QK-17-022	137.0	138.0	1.00	1.02	0.46

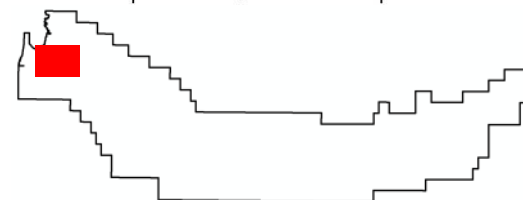


Qiqavik Project

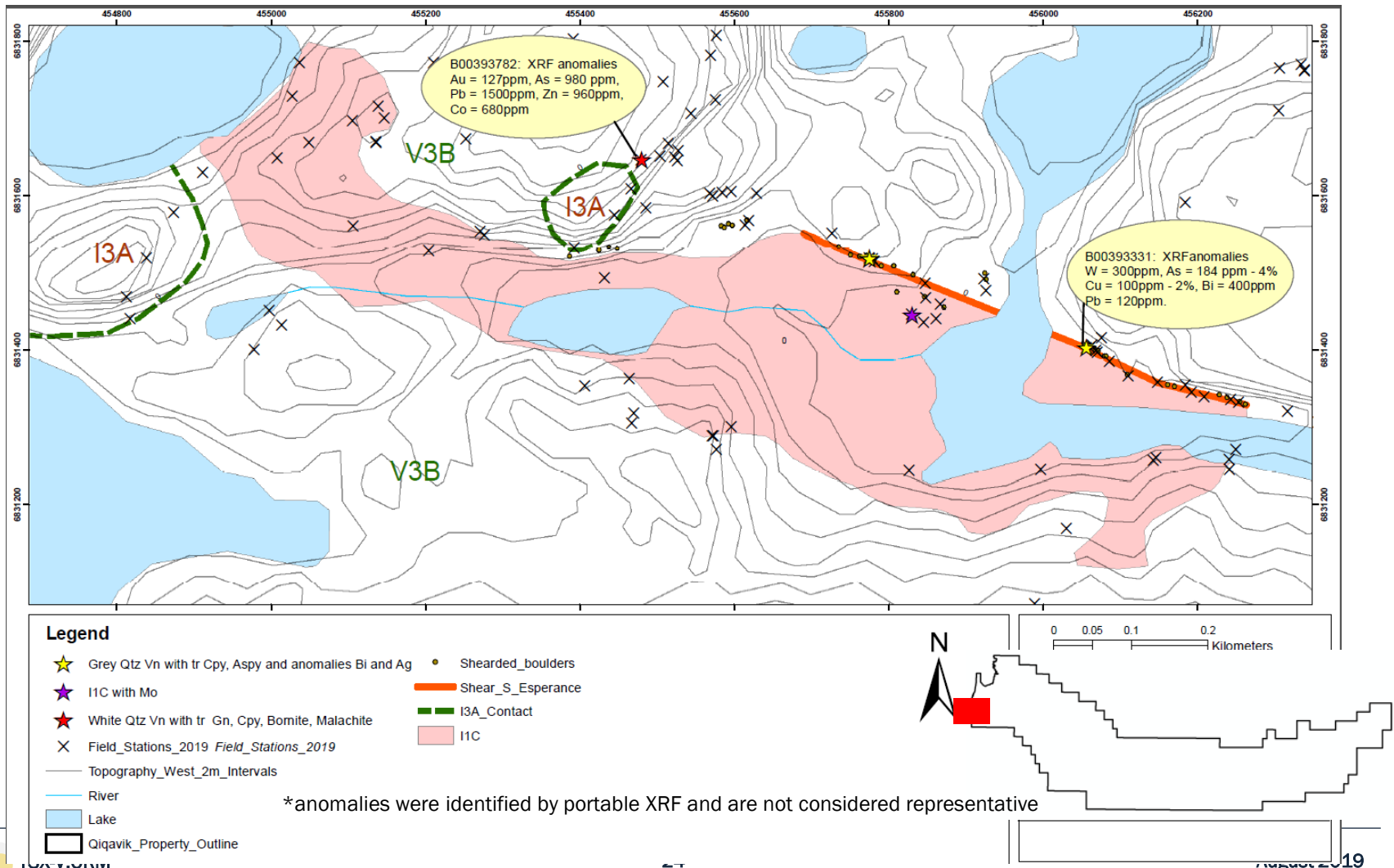
Esperance and Esperance West



Esperance grab samples and drilling shown on EM responses (Pink - high)



“I1C”- intrusion related anomalies* identified south of Esperance while confirming VTEM anomalies



Fostering strong relationships with government, local communities and First Nations Groups

- Orford maintains an open dialog with local communities
- Representatives of Salluit, Akulivik and Kativik Regional Gov. (KRG) have visited the site
- Working with LHCs to hire local workforce during summer exploration programs
- 16% (18% in 2017) of workforce in 2018 were Inuit
- 12% (14% of 2017) of exploration expenditures were with Nunavik Inuit Enterprises
- Identifying and notifying communities and Avataq of archeological sites
- Provided in-kind support to KRG for abandoned mineral exploration site rehabilitation



To Date Aug 8:

- Frost Boils: 289
 - Grab: 573
 - Large Tills: 118
 - 1128 I-km VTEM
 - 38.4 I-km IP
 - ~1500m drilling
 - Camp will run until 3rd or 4th week of August
-
- Key Successes in 2019 to Date:
 - Systematic approach of prospecting and follow up has improved geological knowledge and transport distance in the central part of Qiqavik
 - Identification and delineation of the largest structures observed on the property to date.

THANK YOU!



David Christie
President & CEO
dchristie@orfordmining.com
416-309-0609

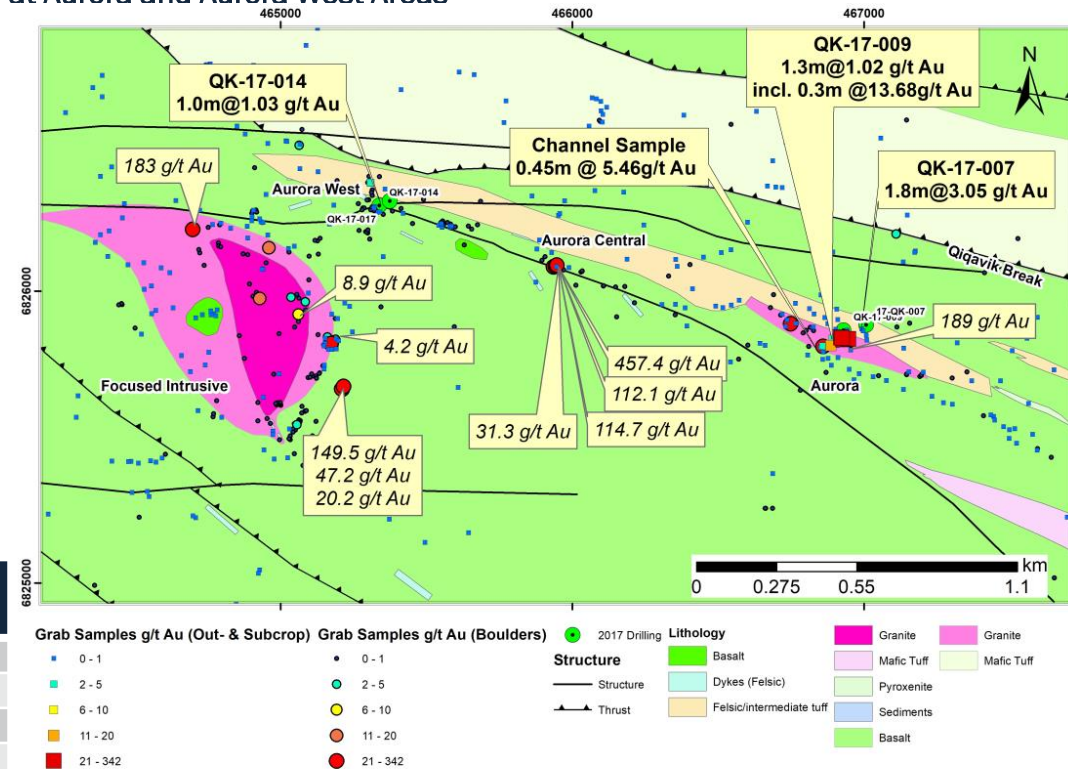
141 Adelaide Street West, Suite 1608
Toronto, Ontario
M5H 3L5
www.orfordmining.com

Qiqavik Project

Aurora and Aurora West

- 2017 drilling intersected two quartz vein-hosted gold mineralized areas (Aurora and Aurora West), separated by 1.6 km
 - Drill results include 2.2 m at 2.55 g/t Au at Aurora West, which includes 0.30 m at 13.68 g/t Au, and 1.0 m at 4.93 g/t Au at Aurora
- Grab samples indicates high-grade gold between these zones (Central Aurora)
- Identified gold structures to the south of the Aurora trend associated with the Focused Intrusive
 - Surface samples results include 8.93 g/t Au, 4.25 g/t Au, 183 g/t Au and 149 g/t Au

Drill hole locations and significant surface samples from 2017 program at Aurora and Aurora West Areas



2017 Drill Results at Aurora and Aurora West

Hole ID	From (m)	To (m)	Length (m)	Gold Grade (g/t)	Copper Grade (%)
QK-17-007	51.2	53.0	1.77	3.05	0.01
Including	51.2	52.3	1.00	4.93	0.01
QK-17-007	56.0	57.0	1.00	1.60	0.01
QK-17-007	86.0	86.8	0.75	2.26	0.01
QK-17-007	122.0	123.0	1.00	0.56	0.00
QK-17-009	21.0	23.2	2.20	2.55	0.01
Including	21.0	21.3	0.30	13.68	0.01
QK-17-009	85.9	87.0	1.12	1.43	0.00

Note that grab samples are selective by nature and values reported may not be representative of mineralized zones.

Drill intervals reported in this presentation are down-hole core lengths as true thicknesses cannot be determined with available information.

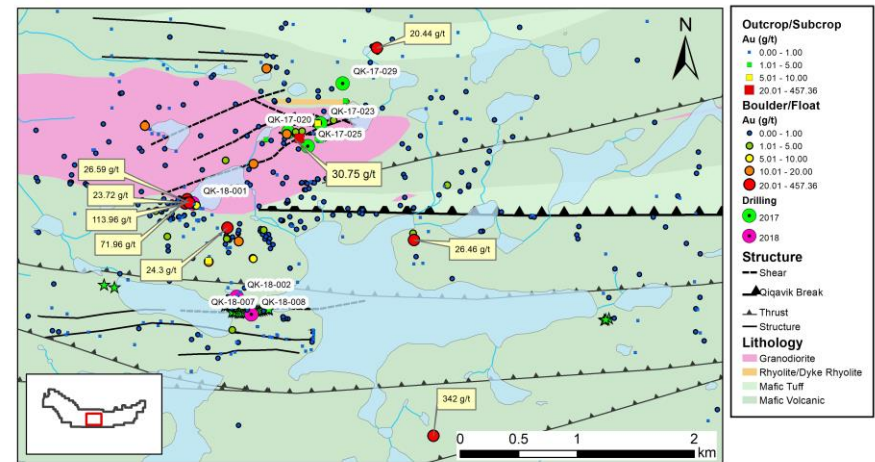
Qiqavik Project

Central and Gerfaut

Central Zone

- Identified multiple mineralized trends over a 2.5 km by 2.5 km area
- Highlighted sampling results include 113.96 g/t Au, 24.46 g/t Au, 17.86 g/t Au and 20.44 g/t Au
- Initial drill results on structures have yielded strongly altered shear zones with anomalous gold (3.0 m at 0.26 g/t Au and 1.0 m at 0.34 g/t Au)

Central Area 2017 drill holes and significant surface sample results



Gerfaut and Gerfaut South Zones

- Discovered multiple boulders containing visible gold in the Gerfaut South Area
 - Grab sample results from these boulders include 285.24 g/t Au, 253.64 g/t Au, 177.47 g/t Au and 122.52 g/t Au
 - Boulders occur 1 km SE and up-ice from the historic drill hole of 10.5 m at 3.08 g/t Au
- Source of boulders containing high-grade gold has yet to be identified
 - Limited expected distance (50 to a few hundreds of metres) between the source of gold mineralization and boulders

Surface sample results in the Gerfaut Area

