



# Orford Mining

Corporate Presentation

Mi3 Quebec Nickel Video Conference - March 25, 2021



TSXV: ORM

March 24, 2021

# Disclaimer

## Cautionary Statement Concerning Forward-Looking Statements

Neither the TSXV nor its Regulation Services Provider (as that term is defined in the policies of the TSXV) accepts responsibility for the adequacy or accuracy of this presentation.

This presentation contains "forward-looking information" including without limitation statements relating to the liquidity and capital resources of Orford and potential of one or more of the Qiqavik and West Raglan properties.

Forward-looking statements involve known and unknown risks, uncertainties and other factors which may cause the actual results, performance or achievements of Orford to be materially different from any future results, performance or achievements expressed or implied by the forward-looking statements. Factors that could affect the outcome include, among others: future prices and the supply of metals; the results of drilling; inability to raise the money necessary to incur the expenditures required to retain and advance the properties; environmental liabilities (known and unknown); general business, economic, competitive, political and social uncertainties; accidents, labour disputes and other risks of the mining industry; political instability, terrorism, insurrection or war; or delays in obtaining governmental approvals, failure to obtain regulatory or shareholder approvals. For a more detailed discussion of such risks and other factors that could cause actual results to differ materially from those expressed or implied by such forward-looking statements, refer to Orford's filings with Canadian securities regulators available on SEDAR at [www.sedar.com](http://www.sedar.com).

Although Orford has attempted to identify important factors that could cause actual actions, events or results to differ materially from those described in forward-looking statements, there may be other factors that cause actions, events or results to differ from those anticipated, estimated or intended. Forward-looking statements contained herein are made as of the date of this presentation and Orford disclaims any obligation to update any forward-looking statements, whether as a result of new information, future events or results or otherwise, except as required by applicable securities laws.

The TSXV has neither approved nor disapproved the contents of this presentation.

## Qualified Person and Quality Assurance and Quality Control

The disclosure of scientific and technical information contained in this presentation has been approved by Alger St-Jean, P.Geo, Chief Geoscientist of Orford, a Qualified Person under NI 43-101.

Samples reported in this presentation and indicated as grab, outcrop, sub-outcrop, boulders and float are grab samples. Grab samples are selective by nature and values reported may not be representative of mineralized zones. All drill intervals reported in this presentation are down-hole core lengths as true thicknesses cannot be determined with available information.

The work program at Qiqavik was supervised by Alger St-Jean, P.Geo, Chief Geoscientist who is responsible for all aspects of the work, including the quality control/quality assurance program. On-site personnel at the project log and weigh all samples prior to sealing and shipping. Sample shipments are sealed and shipped to Techni-Lab, Sainte-Germaine-Boulé, Québec. All gold assays reported were obtained by either 350-g screen fire assay or standard 50-gram fire-assaying-AA finish or gravimetric finish (method 1A2-5 and 1A3-50) at. The 350-g screen assay method is selected by the site geologist or the lab when samples contain coarse gold or higher percentage of sulfide mineralization that may be associated with gold relative to surrounding intervals. All samples are also analyzed for multi-elements, including copper and silver, using a four-acid method with an ICP-EOS and ICP-MS finish at Tech-labs affiliated Actlabs in Ancaster, Ontario. Overlimits were analyzed by peroxide fusion with ICP-EOS finish. Drill program design, Quality Assurance/Quality Control ("QA/QC") and interpretation of results is performed by qualified persons employing a QA/QC program consistent with NI 43-101 and industry best practices. Standards and blanks are inserted at a minimum of 10% and 5% for core and grab samples respectively for QA/QC purposes in addition to those inserted by the lab. A subset of samples has not yet been sent for a verification assay at another lab.

Techni-Lab Laboratory, is a subsidiary of Act Labs, is accredited (n. 707) by the Standards Council of Canada and found to comply with the requirements of ISO/IEC 17025:2005 (CAN-P-4E) and CAN-P-1579.

The technical information disclosed herein in respect of the Qiqavik Property is based on the independent report of Clement Dombrowski, P.Geo and Sylvain Desbiens P.Geo. titled "NI 43-101 Technical Report on Qiqavik Project, Northern Quebec, Canada" effective September 14, 2017, and on Orford Mining's press releases available on SEDAR. The information disclosed herein in respect of the West Raglan Property is based on the independent report of Clement Dombrowski, P.Geo. titled "NI 43-101 Technical Report on West Raglan Project, Northern Quebec, Canada" effective February 20, 2017.

# Orford Mining Corp. – Key Investment Points

Exploring two key volcanic belts on five 100% owned active properties



## Strong Balance Sheet/ Strategic Investor Support

- Completed a C\$5.25 million Private Placement on October 16, 2020
- In the spring of 2019 Alamos Gold became a 22.2% shareholder and continues to be supportive
- Widely-held ownership with several strategic shareholders and strong institutional and retail ownership

## Qiqavik Project (100%): discovery of new gold district

- Property covers 390 km<sup>2</sup> of the highly prospective and underexplored Cape Smith Belt
- Identified a 40-km long Qiqavik Break Shear Zone with 12 gold mineralized areas, which remain largely unexplored
- The 2021 program of \$3.2 million will focus on the 7 km + long IP Lake Structural Zone where high-grade boulder trains and Glacial till dispersion trains point to the IPLSZ as a potential source for those dispersion trains

## Acquired three new Gold Properties (100%), in the Joutel Region of the prolific Quebec

- Three new properties recently acquired in the Joutel district of the Abitibi Region of Quebec.
- All are situated on key regional structures including the Joutel Volcanic Sequence structure or the southern splay of the Casa Berardi Structural Zone. The properties have seen very little exploration but are proximal to a number of past producers. The three properties total 209 km<sup>2</sup> in the Abitibi region of Quebec.
- A Program of till pit sampling, RC drilling and airborne geophysics is currently ongoing on McClure East and Joutel South

## West Raglan (100%): high grade Ni-Cu-PGE Wyloo Metals Earn-In

- Wyloo Metals Entered a Earn-in agreement whereby expenditures of \$25 million can earn Wyloo 80% .
- Advanced stage Ni-Cu-PGE exploration project covering nearly 814 km<sup>2</sup> in the Cape Smith Belt
- Frontier Zone: similar geology to Glencore's Raglan Mine (MI&I: 35Mt at 3.2% Ni, 0.93% Cu and 3.2 g/t PGE<sup>1</sup>) with high-grade (2-3% Ni, 3+ g/t PGE) mineralized lens clusters over a 2,500 m strike
- \$1.7 million budget approved for 2021 field season consisting of geophysics, geological mapping and prospecting.

# Management & Board of Directors

High Quality Exploration Team and Capital Markets-Focused Board

## David Christie

*President, CEO, and Director*

- Professional Geologist with more than 34 years of experience in the resource sector
- Former Vice President with Goodman & Company Investment Counsel and Dundee Resources Inc.
- Former President, CEO, and Director of Eagle Hill Exploration and former mining research analyst at TD and Scotia
- Former Director of eCobalt Solutions Inc., Osisko Mining Inc. and Condor Precious Metals (private)

## Cindy Davis

*CFO*

- Accounting professional with 18 years of accounting experience, 12 of which has been with Marrelli Support Services at a Senior Level. Registered as a CA and a CPA.

## Alger St-Jean

*Chief Geoscientist*

- Professional Geologist with +25 years of experience in mineral exploration and development
- Currently Chief Operating Officer of Dumont Nickel – Magneto Investments LP
- Previously VP Exploration & director of Orford Mining, former VP Exploration of RNC Minerals (Karora Resources) and former Senior Geologist at Xstrata Nickel (formerly Falconbridge)

## Michelle Sciortino

*VP of Exploration*

- Professional Geologist with +14 years of experience in mineral exploration and development
- Previously Senior Project Geologist with RNC Minerals (Karora Resources), and Senior Geologist of Orford Mining

## Mark Goodman

*Director*

- Former Executive VP and COO of Dundee Corporation and Chairman of Dundee Sustainable Technologies
- Previous CEO of Ryan Gold, Valdez Gold, Cogitore Resources, a base metal exploration company in Northern Quebec

## Lawrence Smith

*Director*

- +25 years of experience in investment management, equity research, and banking – MBA and CFA holder
- VP Portfolio Management and Research at CIBC Asset Management, Director of Equity Research at Scotia Capital and Blackmont Capital, and Project Manager – Corporate Development at Rio Algom Limited

## Ben Pullinger

*Director*

- Professional Geologist with over 15 years of exploration and mining experience
- Current Senior Vice President of Geology for Excellon Resources Inc.
- Former Vice-President Exploration at Roxgold Inc.

## Peter MacPhail

*Lead Director*

- Professional Engineer with over 25 years of operational experience
- Current Chief Operating Officer of Alamos Gold Inc,
- Former Chief Operating Officer of AuRico Gold

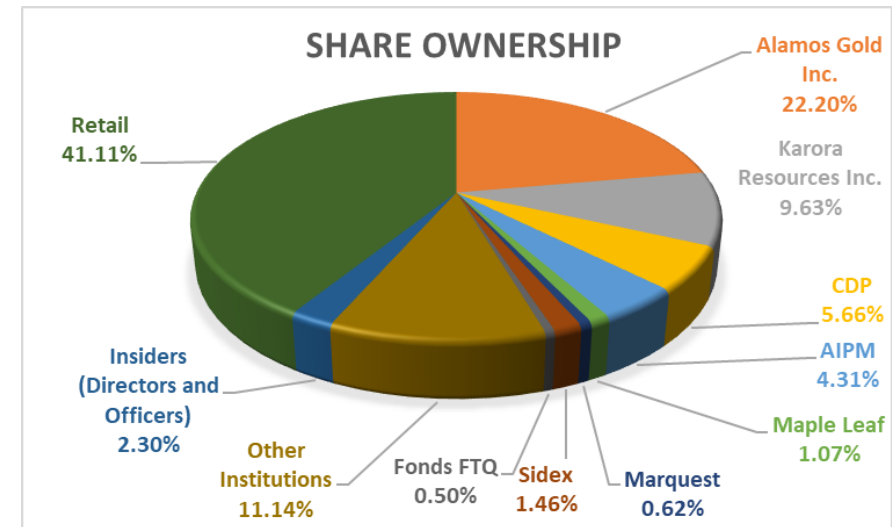
# Corporate Snapshot

## Capital Structure and Share Performance

### Capital Structure

Ticker	TSXV:ORM
Share Price (as of March 23, 2021)	C\$0.16
Basic Shares Outstanding <sup>1</sup>	116.8M
Options (weighted avg. strike of C\$0.20)	8.1M
Warrants	15.3M
Fully Diluted Shares Outstanding	140.2M
Market Capitalization (Basic)	C\$18.04M
Cash <sup>1</sup>	C\$0.5M

1. Sept. 30, 2020. (note closed a \$5.25 million private placement on October 16, 2020)
2. Shareholders made up of 40.6% Retail, 2.3% Insiders (Directors and Officers), 25.1% Institutional, 31.8% strategic holders.

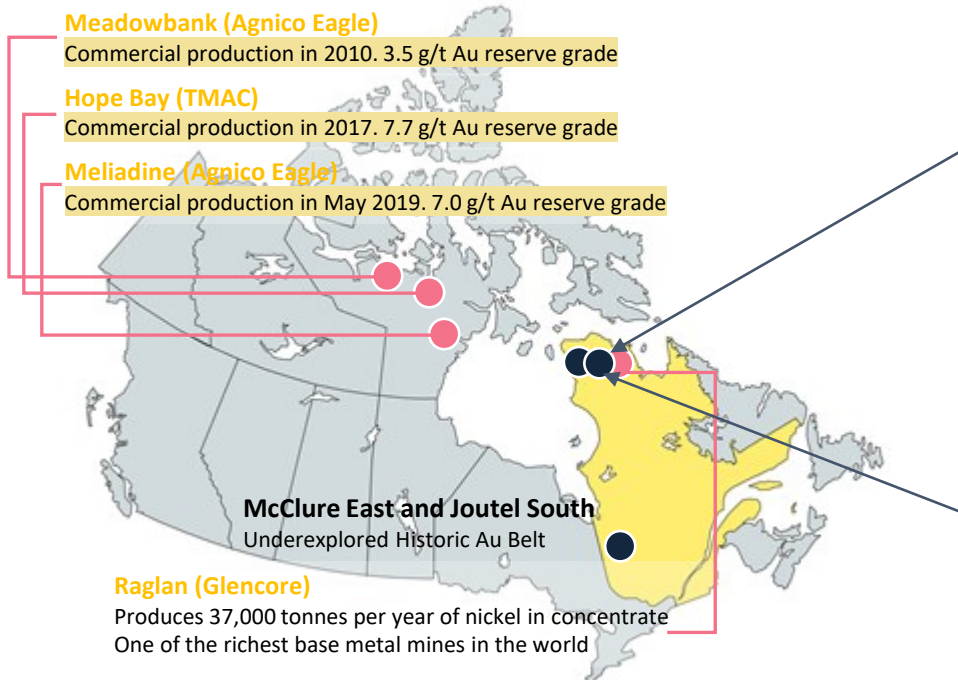


Source: Yahoo Finance

# Project Portfolio –Large Regional Properties

Focused on underexplored area of Quebec

Over 1,204 km<sup>2</sup> land position in the highly prospective and underexplored Cape Smith Belt and 209 km<sup>2</sup> in the heart of the Quebec Abitibi  
Quebec is consistently viewed as one of the most attractive jurisdictions from a mining investment point of view



## Qiqavik Project (Au)(100%)

- Camp Scale Property with more than 12 high grade gold showings at surface in an previously unexplored part of the Cape Smith Belt
- New Potential Gold Camp with Opportunity to host multiple deposits
- Early Stage Exploration- Less than 5 months of field work

## West Raglan Project (Ni, Cu, PGE's)(100% Interest)

- Wyloo Metals Pty Ltd. has entered an earn in agreement with Orford to earn up to a 80% interest by spending \$25 million amongst other items.
- ~663 km<sup>2</sup> property in the lower Cape Smit Belt Covering the stratigraphy of the North (Raglan Trend) and South (Nunavik Nickel) ultramafic Trends
- Advanced Exploration: Traced outcropping sulphide mineralization over +35 km strike
- Frontier Zone: identified five high-grade (2-3% Ni, 3+ g/t PGE) mineralized lens clusters over a 2,500 m strike (comparable geology to Glencore's Raglan Mine)

## McClure East, Joutel South and Joutel Omega (Au) (100%)

- Located in the prolific gold mineralized Casa Berardi /Joutel Structures, in the heart of the Abitibi region (accessible by road)
- Area last saw exploration in the early 1990's,.
- Properties are the underexplored extension of the Joutel trend that hosted both Agnico-Eagle Mines Ltd.'s (AEM-T) founding gold mine Eagle/Telbel which produced in excess of 1.1Moz of gold and a number of copper assets that have produced 244 Mlbs of copper, 116Mlbs of Zinc and 52Mlbs of silver<sup>1</sup>

## Royalties

- Owns a 3.5% NSR on the Falan property (Malabar Gold Corp.) and a 2% NSR on the Santa Ana property (Outcrop Gold Corp.) both in the Mariquita Silver district of Columbia. This district was one of Colombia's most prolific colonial silver camps.

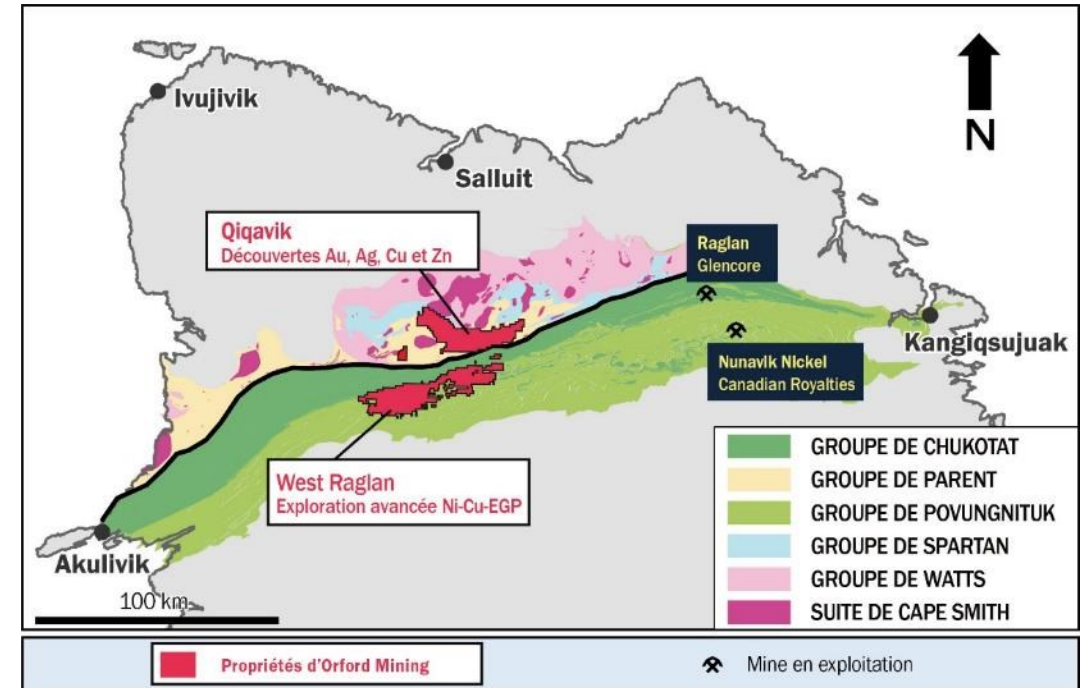
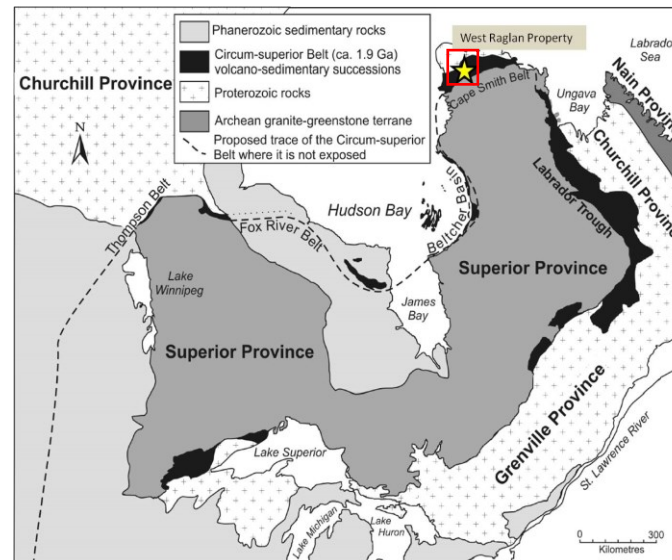
1. (Système d'information géominière of Québec "SIGEOM", Quebec Ministry of Energy and Natural Resources. April 20,2020)

# West Raglan Project

Large, Highly Prospective Land Package in an Underexplored Belt

Identified outcropping sulphide mineralization over +35 km of strike with limited testing at many zones

- Located ~60 km from Glencore's Raglan Mine
  - Raglan is a first quartile cash cost nickel operation
  - One of the highest ore grades among significant global nickel deposits (Raglan's Proven and Probable Reserves as of Dec. 2019 stood at 10.39 Mt at 2.81% Ni, 0.0.77% Cu, 0.83 g/t Pt, 2.03 g/t Pd and 0.06% Co (1))
- The parallel ultramafic "Raglan Belt" has yielded world-class nickel deposits, but the northern volcano-sedimentary portion of the Belt remains virtually unexplored
- West Raglan is located in The Cape Smith Belt is part of the Trans-Hudsonian Orogeny (1.9Ga) or "Circum-Superior Belt"
- Historical exploration and production Thompson and Fox River, Manitoba in the west end as well as in the Labrador Trough at the east end
- Property covers the 50km strike E-W along the North (Raglan) trend and the South (Nunavik Nickel Trend)
- **Orford executed a earn-in agreement with Wyloo Metals in January 2021 on West Raglan**



1. This information is not necessarily indicative of the mineralization on Orford Mining's properties. Source: Glencore Resources & Reserves Dec 31, 2019.

The Agreement allows Wyloo Metals to earn up to 80% of the Project for total expenditures of \$25.0 million over 7 years, as follows:

- 1) Spend \$6M by 4<sup>th</sup> anniversary earn 51 % interest in the Property and form JV. This includes minimum committed expenditures of \$1.0 million during the 1<sup>st</sup> year of the agreement;
- 2) Spend an additional \$5M for a total of \$11M by 5<sup>th</sup> anniversary to earn 70%;
- 3) Spend an additional \$6M for a total of \$17M by 6<sup>th</sup> anniversary to earn 75%;
- 4) Spend an additional \$8M for a total of \$25M and make a \$1.5 million cash payment to Orford by 7<sup>th</sup> anniversary, to earn 80% by completing a Feasibility Study;
- 5) Upon completion of the earn-in period Orford may contribute pro-rata to maintain interest in the JV or dilute down to 10% whereby interest is converted to a 2.0% NSR.

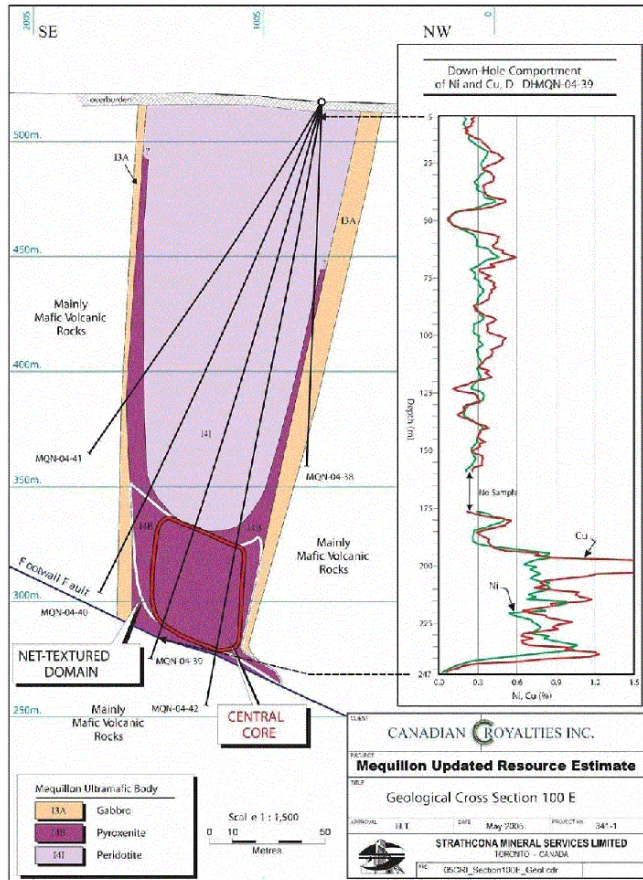
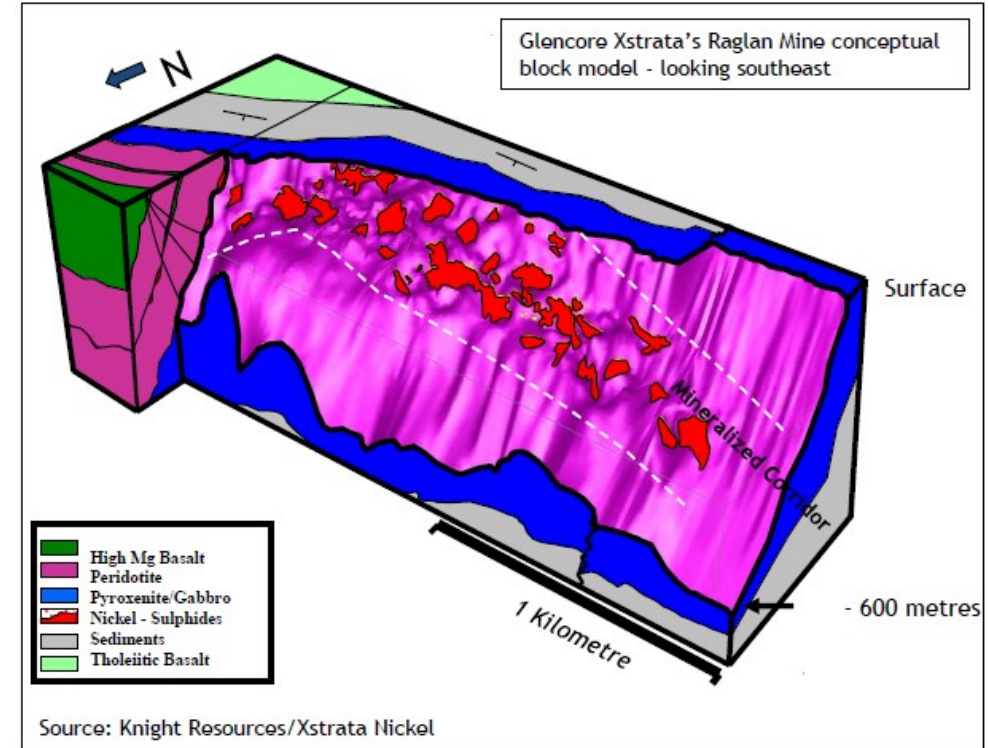


Figure 8 P&E Mining Consultants Inc.

Canadian Royalties' Mequillon deposit is an ultramafic dyke 1.5km x200m (peridotite core, pyroxenite and gabbro on margins, hosts net-textured and massive sulfides (Ni:Cu 1:1)

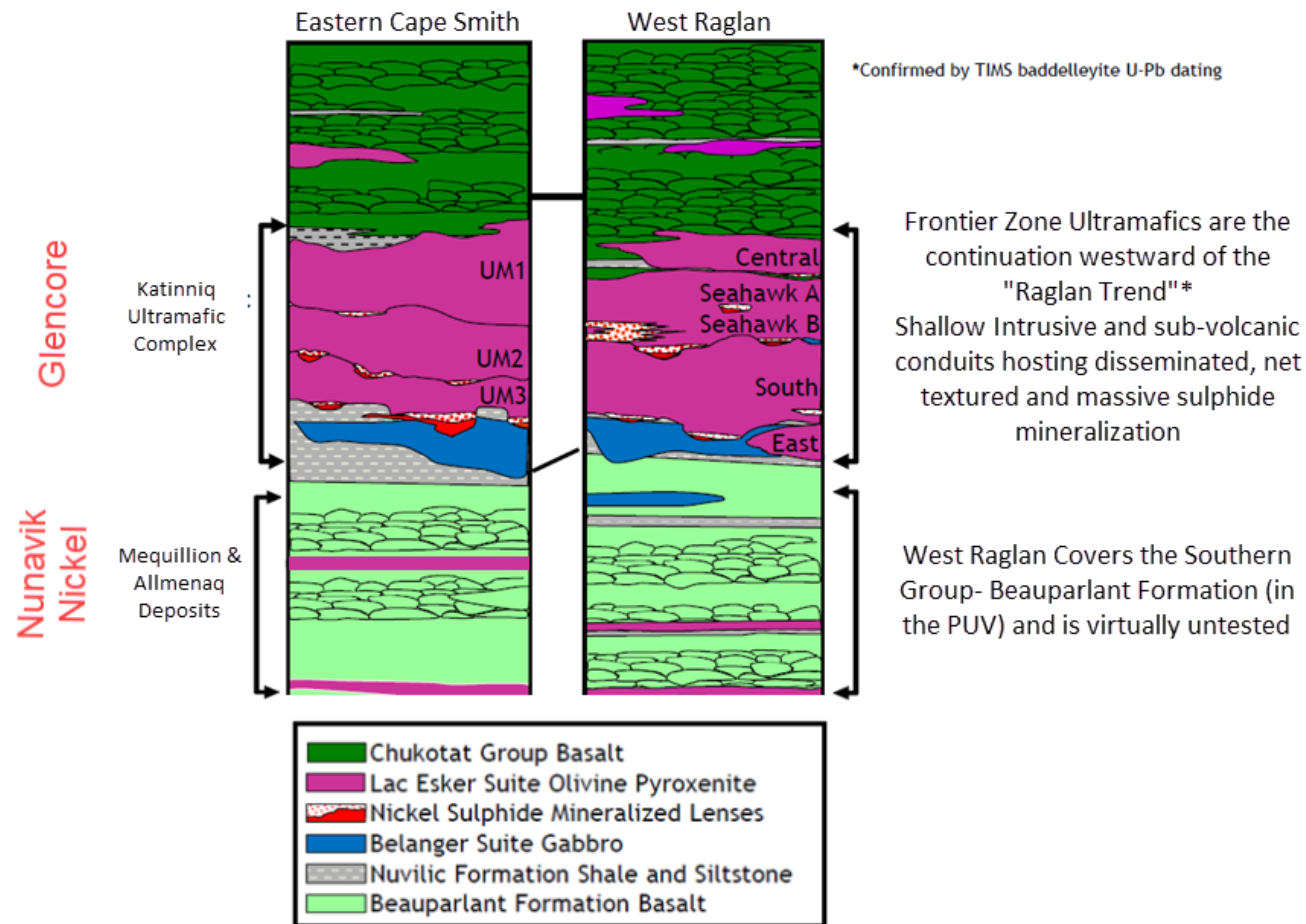


Source: Knight Resources/Xstrata Nickel

Raglan Mine hosts 190 individual sulphide lenses in 12 distinct zones; four zones are currently in production feeding a central mill facility (Ni:Cu, 3:1)

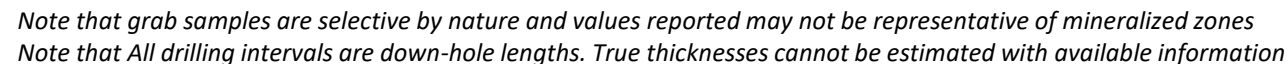
# West Raglan Project

## Cape Smith Belt Analogues



- The West Raglan Property Covers the same stratigraphy as the world class Xstrata Raglan mine and Nunavik Nickel Mine, and exhibits similar grades and intersections (see next slides)

- Outcropping/Frost Heave high grade Nickel-Copper mineralization along many parts of the North (Raglan Trend)
- Historically exploration was focused around the Frontier zones where Raglan type Nickel sulfide pods have been discovered.
- The South (Nunavik Nickel) Trend and many parts of the North(Raglan) Trend remain virtually unexplored and un-tested.

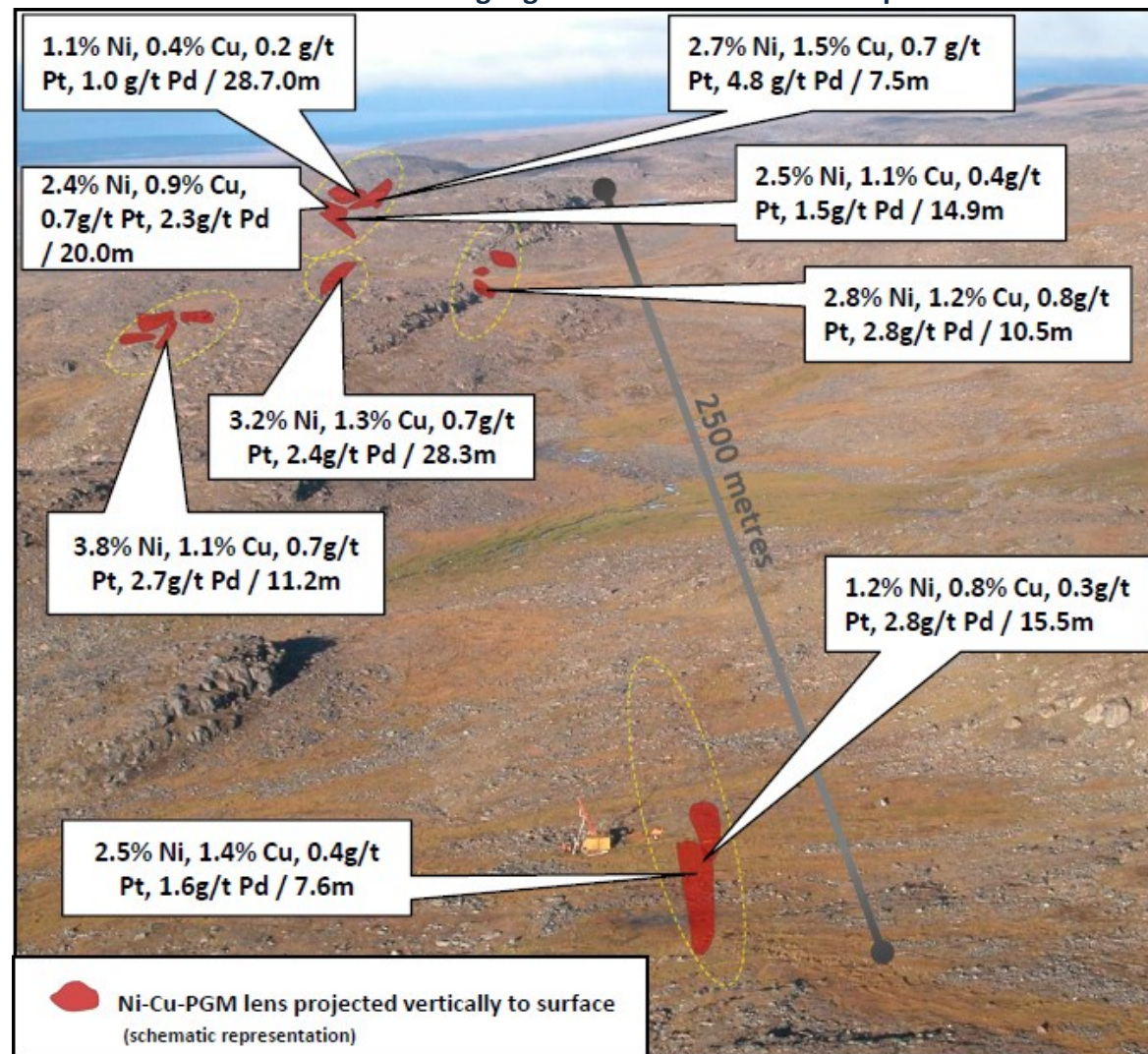


# West Raglan Project

Frontier Zone – High Grade Palladium/Platinum with High Grade Nickel/Copper

- Identified five key mineralized lens clusters over a 2,500 m strike
- High-grade (2-3% Ni, 3+ g/t PGE) sulphide lenses outcropping
- High priority targets modelled from BHEM and 3D magnetic inversion suggest vast potential remains above 250 m depth
- Intersected many high-grade drill holes over past exploration programs (2003 to 2008) across the Frontier Zone

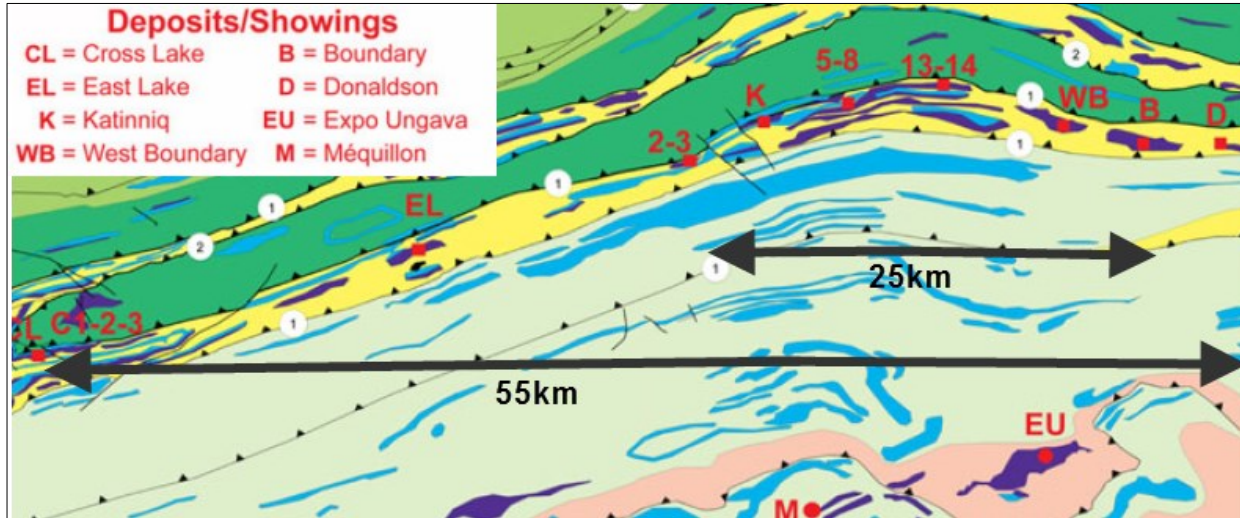
Overhead of Frontier Zone with highlighted historical drill intercepts



Note that All drilling intervals are down-hole lengths. True thicknesses cannot be estimated with available information

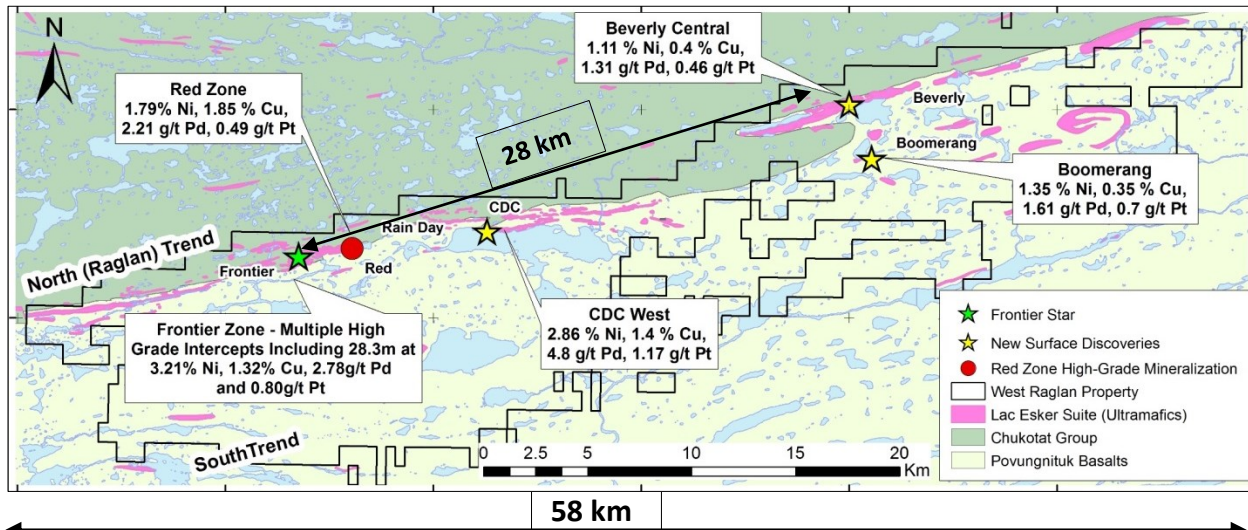
# West Raglan Project

## Comparison of Known Mineralization on West Raglan to the Raglan Mine



Geological map of the Raglan Belt. High Grade mineralization lenses occur in clusters spaced as close as 1km and up to tens of km from each other.

Source: Modified after Williams et al. 2011, Watts and Osmond (1999) and Leshar (2007)



West Raglan geology map showing high grade occurrences on the Raglan Trend. New 2015 surface discoveries demonstrate the occurrence of high grade Ni-Cu-PGE mineralization outside of the Frontier zone and that the potential for the discovery of high grade deposits extends for tens of km along strike at surface

Note that grab samples are selective by nature and values reported may not be representative of mineralized zones  
Note that All drilling intervals are down-hole lengths. True thicknesses cannot be estimated with available information

# West Raglan Project

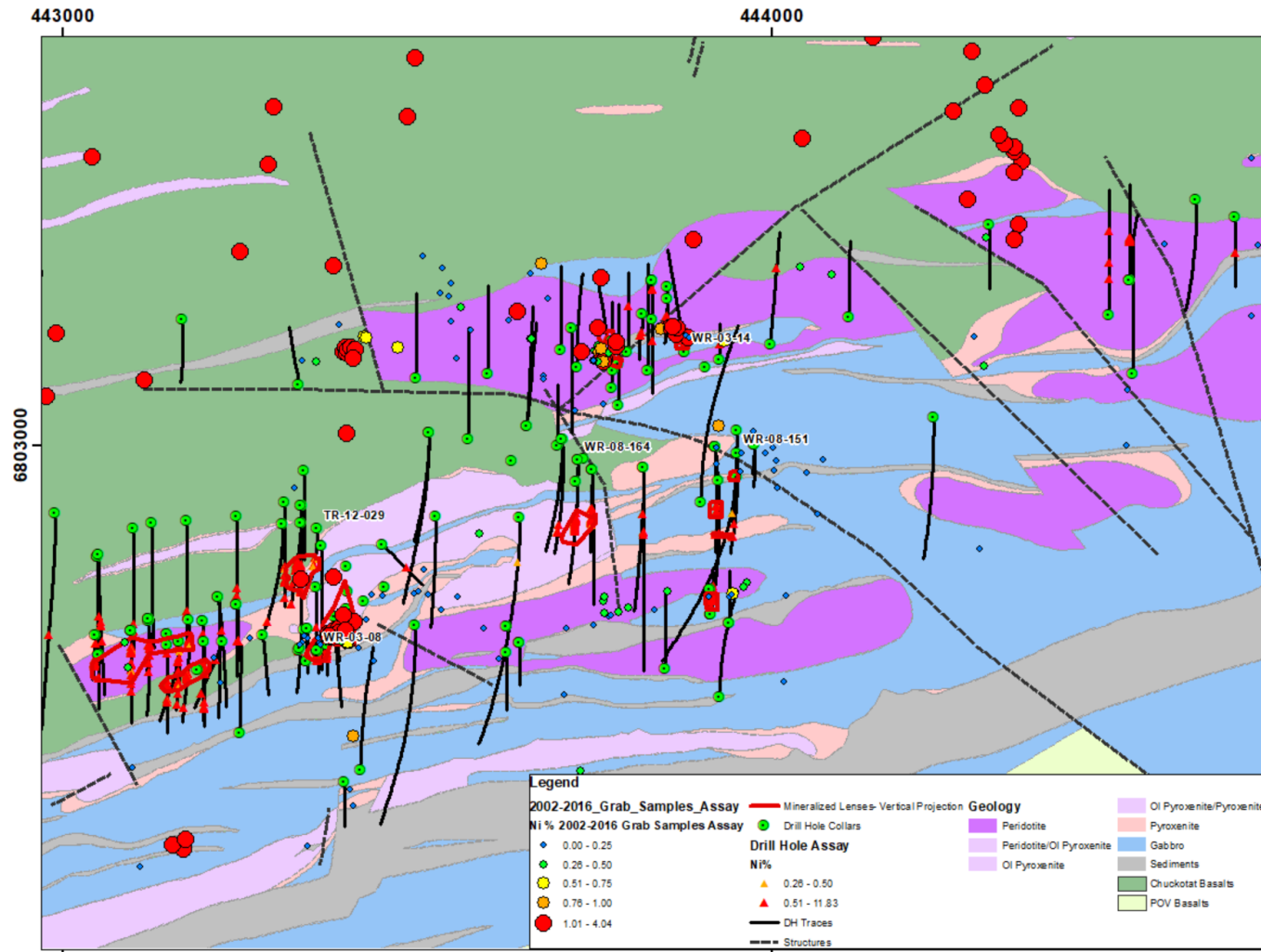
## 2021 Exploration Program

- 2021, \$1.7 million Exploration program will take place in July & August
- Program will focus on using proven geophysical methods in the belt that have led to Nickel discovery at Raglan and Nunavik Nickel to define and develop drill targets
- Implementation of ground EM with SQUID sensor and prospecting/mapping teams to define new targets and follow up on historical results.



# West Raglan Project

## Frontier Zone Core



- Historically, the Frontier Area of West Raglan hosts the majority of the West Raglan Drilling
- Several Raglan Styles Nickel-Sulphide pods have been discovered.
- Examples of Raglan-type grades and intercepts are shown on the next slide.

*Note that grab samples are selective by nature and values reported may not be representative of mineralized zones*  
*Note that All drilling intervals are down-hole lengths. True thicknesses cannot be estimated with available information*

# West Raglan Project

## Frontier Zone Core

### Historical Frontier Intercepts

Drillhole ID	From (metres)	To (metres)	Interval (metres)	Nickel %	Copper %	Platinum g/t	Palladium g/t	Cobalt %
<b>Frontier Central</b>								
TR-12-025	40.00	48.23	8.23	0.76	0.28	0.24	0.71	0.03
WR-03-14	20.75	31.25	10.50	2.78	1.21	0.80	2.78	0.05
WR-03-16	63.75	70.00	6.25	3.49	1.46	0.51	2.08	0.08
WR-08-152	158.70	174.60	15.90	0.85	0.42	0.19	0.71	0.05
<b>Frontier East</b>								
TR-12-011	15.94	23.60	7.66	1.28	0.39	0.20	0.65	0.05
WR-03-12	15.50	31.00	15.50	1.20	0.81	0.28	1.03	0.04
WR-03-13	41.80	49.42	7.62	2.54	1.42	0.39	1.56	0.09
WR-03-17	50.80	68.00	17.20	1.16	0.55	0.23	0.87	0.03
WR-05-98	77.45	84.05	6.60	0.87	0.42	0.15	0.58	0.02
<b>Frontier Seahawk A</b>								
TR-12-001	122.10	136.60	14.50	1.96	0.65	0.30	1.10	0.05
TR-12-006	129.81	138.74	8.93	0.75	0.29	0.15	0.80	0.03
WR-04-48	52.60	60.10	7.50	0.73	0.33	0.12	0.41	0.03
WR-07-130	152.00	157.00	5.00	2.38	1.38	0.70	2.39	0.05
WR-08-151	56.70	67.90	11.20	3.81	1.14	0.69	2.74	0.11
WR-08-164	132.30	141.70	9.40	0.71	0.33	0.12	0.48	0.02
WR-08-164	141.85	170.13	28.28	3.21	1.32	0.65	2.43	0.07

Drillhole ID	From (metres)	To (metres)	Interval (metres)	Nickel %	Copper %	Platinum g/t	Palladium g/t	Cobalt %
<b>Frontier Seahawk B</b>								
WR-04-47	44.50	61.25	16.75	0.78	0.31	0.44	0.44	0.02
<b>Frontier South</b>								
TR-12-010	99.00	114.00	15.00	1.64	0.62	0.22	0.22	0.04
TR-12-029	172.00	179.50	7.50	2.71	1.50	0.68	4.79	0.06
WR-03-04	0.00	10.00	10.00	0.88	0.54	0.32	1.25	0.02
WR-03-08	15.00	35.00	20.00	2.41	0.92	0.66	2.28	0.06
WR-04-57	4.00	12.50	8.50	1.83	0.93	0.50	1.91	0.04
WR-04-69	77.50	88.10	10.60	0.76	0.35	0.11	0.48	0.02
WR-04-74	15.60	30.50	14.90	2.52	1.07	0.37	1.50	0.06
WR-05-100	118.80	128.00	9.20	1.89	0.60	0.26	1.06	0.05
WR-06-113	125.00	143.60	18.60	1.34	0.68	0.26	1.00	0.04
WR-06-125	161.65	171.50	9.85	0.89	0.27	0.26	1.03	0.02
WR-07-128	157.60	186.25	28.65	1.06	0.36	0.24	0.96	0.03
WR-07-128	217.20	223.10	5.90	2.98	0.68	0.41	1.61	0.07
WR-07-142	246.60	253.90	7.30	2.72	2.07	0.65	2.43	0.07
WR-08-149	132.20	144.26	12.06	1.50	0.71	0.26	1.03	0.04

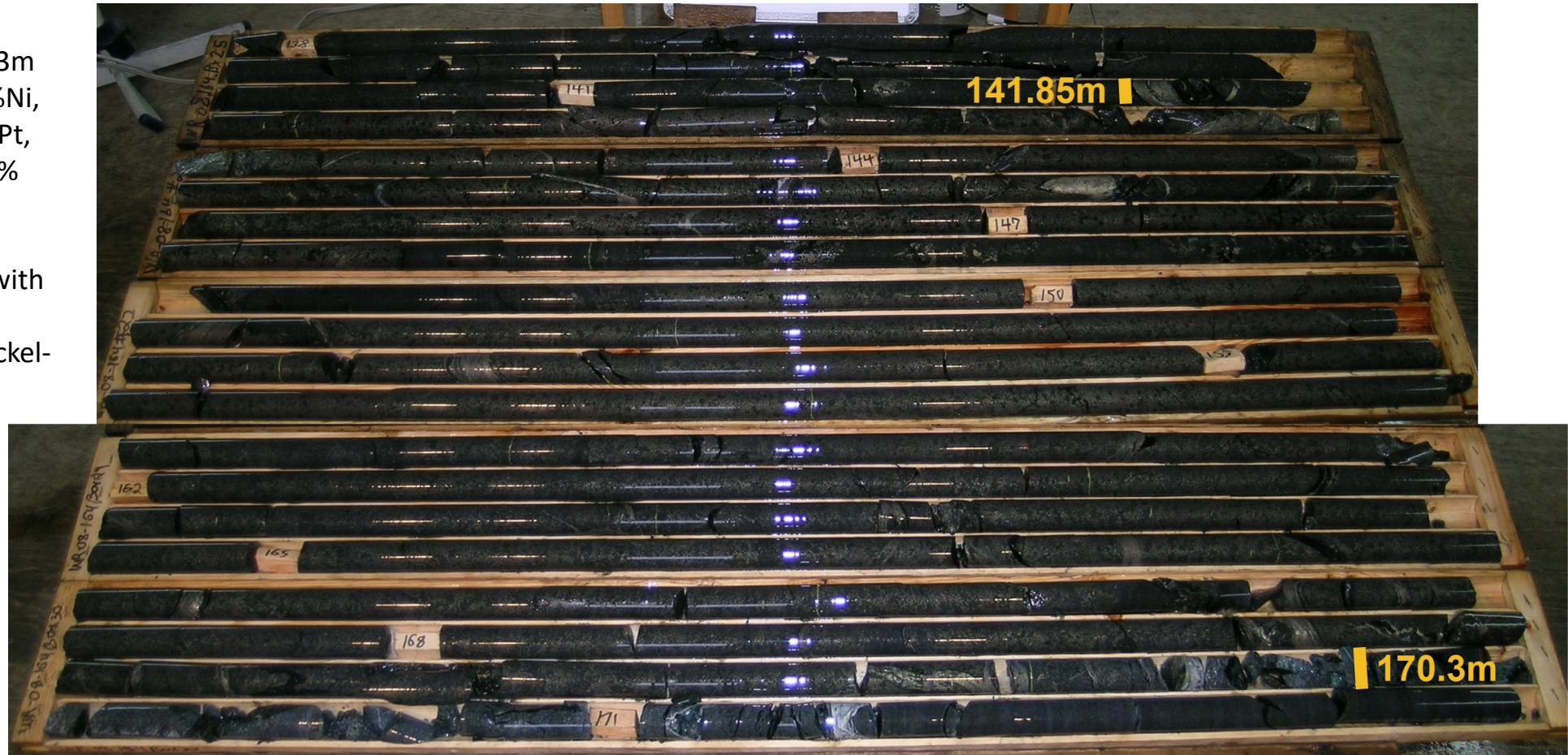
Note that grab samples are selective by nature and values reported may not be representative of mineralized zones  
 Note that All drilling intervals are down-hole lengths. True thicknesses cannot be estimated with available information

# West Raglan Project

Frontier Zone Core WR-08-164

Hole WR-08-134  
141.85m to 170.3m  
(28.8m) @ 3.21%Ni,  
1.32%Cu, 0.6g/t Pt,  
2.43 g/t Pd, 0.07%  
Co

Ultramafic flow with  
net-textured to  
Semi-massive Nickel-  
sulfides.



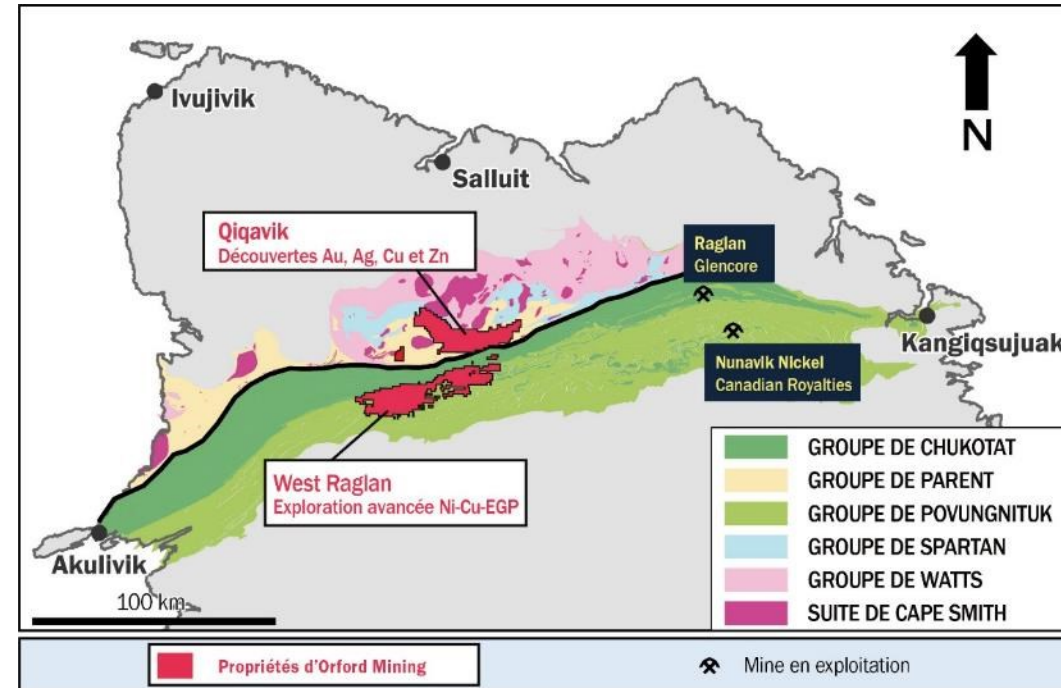
*Note that grab samples are selective by nature and values reported may not be representative of mineralized zones  
Note that All drilling intervals are down-hole lengths. True thicknesses cannot be estimated with available information*

# Qiqavik Project

Large, Highly Prospective Land Package in an Underexplored Emerging Gold District

**40-km long Qiqavik Break Shear Zone remains largely unexplored with potential for multiple large gold deposits**

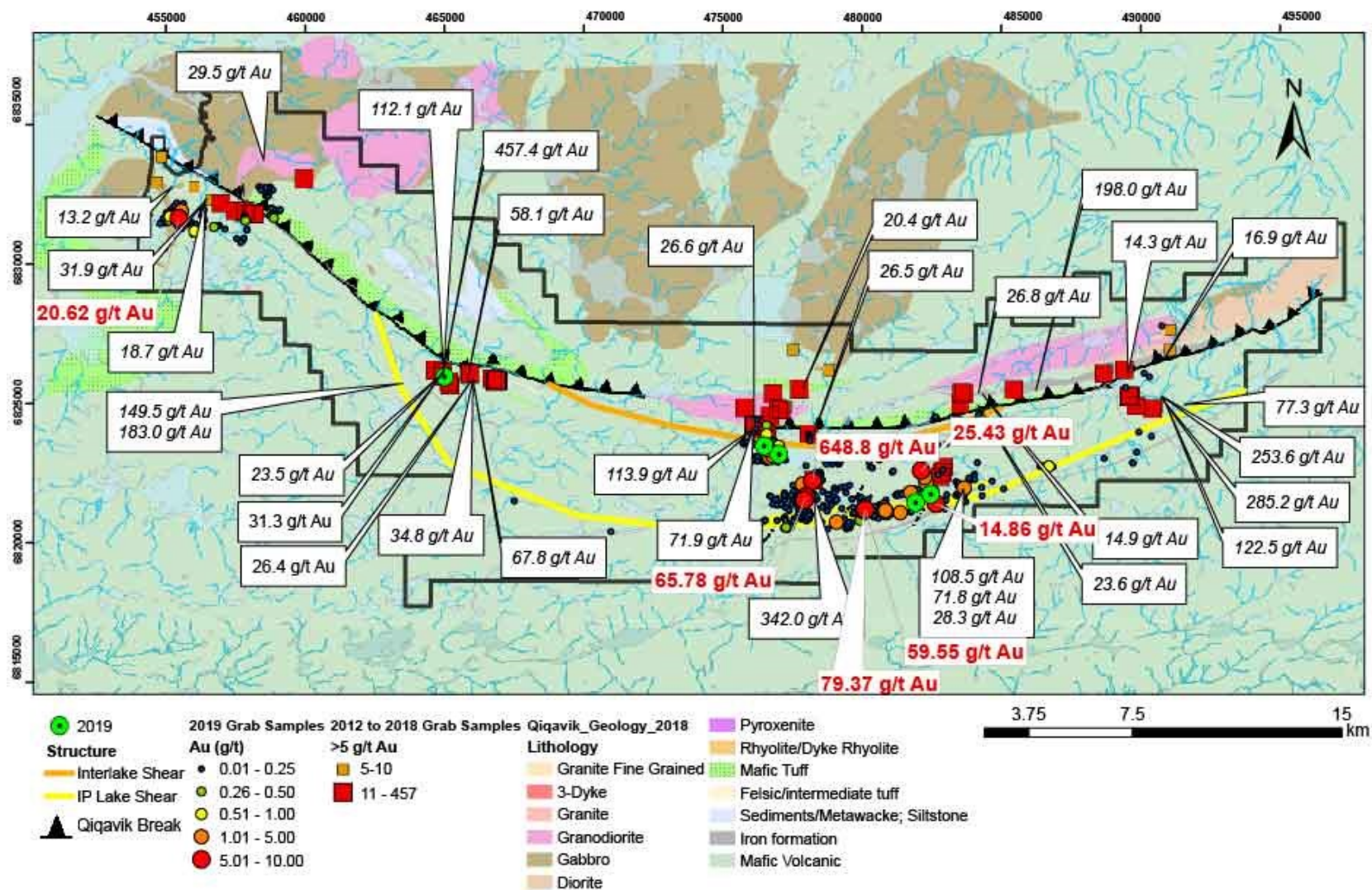
- 100% interest in ~390 km<sup>2</sup> of highly prospective gold properties in northern Quebec
- ~60 km from Glencore's world-class Raglan Mine
- The parallel ultramafic "Raglan Belt" has yielded world-class nickel deposits, but the northern volcano-sedimentary portion of the Belt remains virtually unexplored
- Property covers the 40 km long Qiqavik Break Shear Zone and part of the Cape Smith Belt
- Gold districts with similar tectonic and age setting to the Cape Smith Belt include<sup>1</sup>:
  - Flin Flon/Snow Lake, Canada
  - Ashanti Belt, West Africa
  - Tanami Goldfields, West Australia
  - Tapajos-Parima Belt, Brazil
- 12 significant mineralized areas discovered
  - Includes Interlake, Esperance, Esperance West, Horizon, Aurora, Aurora West, Gerfaut, Gerfaut South, ABG Zone, Focused Intrusive and Central Qiqavik, IP Lake Shear Corridor



1. This information is not necessarily indicative of the mineralization on Orford Mining's properties

# Qiqavik Gold Project

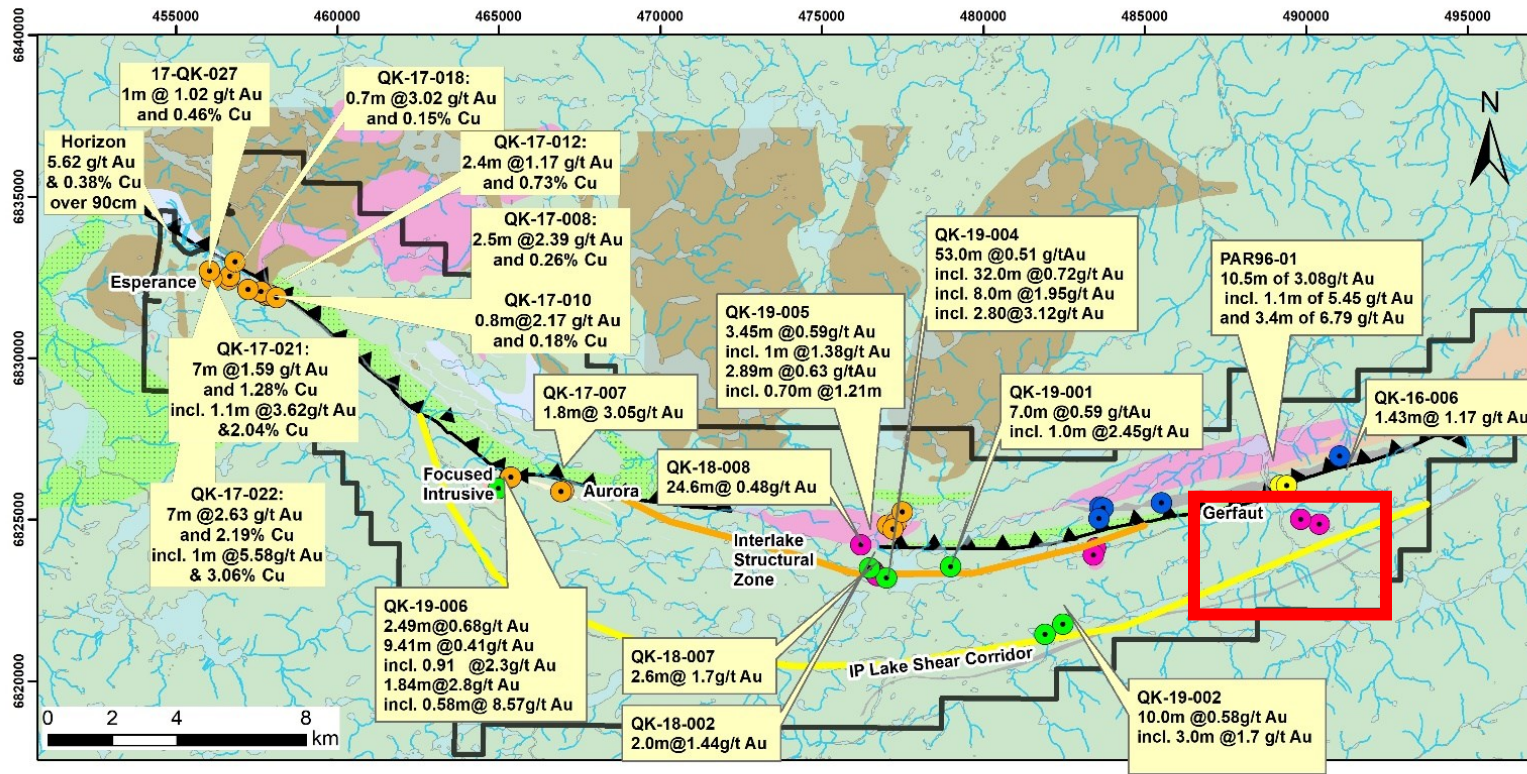
High grade gold surface showings are prolific across the +40 km long property



Note that grab samples are selective by nature and values reported may not be representative of mineralized zones

# Qiqavik Project - Property Wide Drilling

## +40 Km of Gold mineralization



### Eastern Property Historic Work

#### 1995 -1998 Falconbridge – SOQUEM

- FL drilled two holes into an EM anomaly and SOQUEM later resampled in DDH PAR96-01 extended mineralized zone to 10.5m of 3.08g/t Au which includes 1.1m of 5.45 g/t Au, 0.59%Zn and 3.4m of 6.79 g/t Au and 0.37% Zn

#### 2011-2012 Tectonic Resources – Corvus Gold

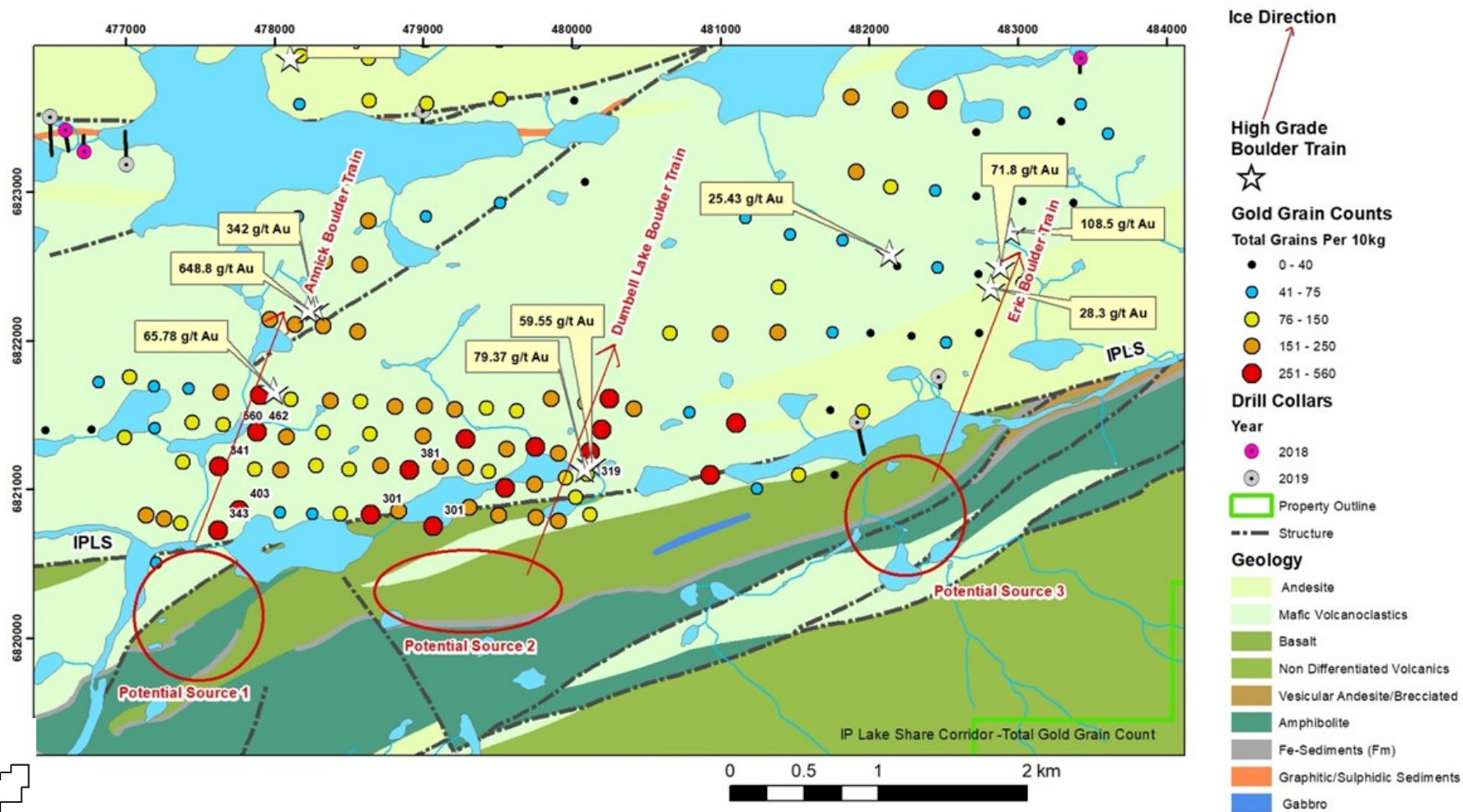
- Geochem surveys across the eastern section of Qiqavik

*Note that grab samples are selective by nature and values reported may not be representative of mineralized zones*

*Note that All drilling intervals are down-hole lengths. True thicknesses cannot be estimated with available information*

# Qiqavik – IP Lake Shear Corridor (IPLS)

## Total Gold Grain Counts and High Grade Boulder Trains

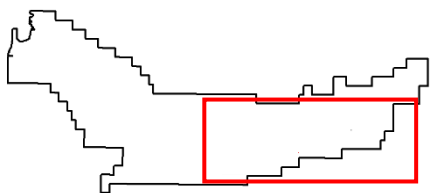
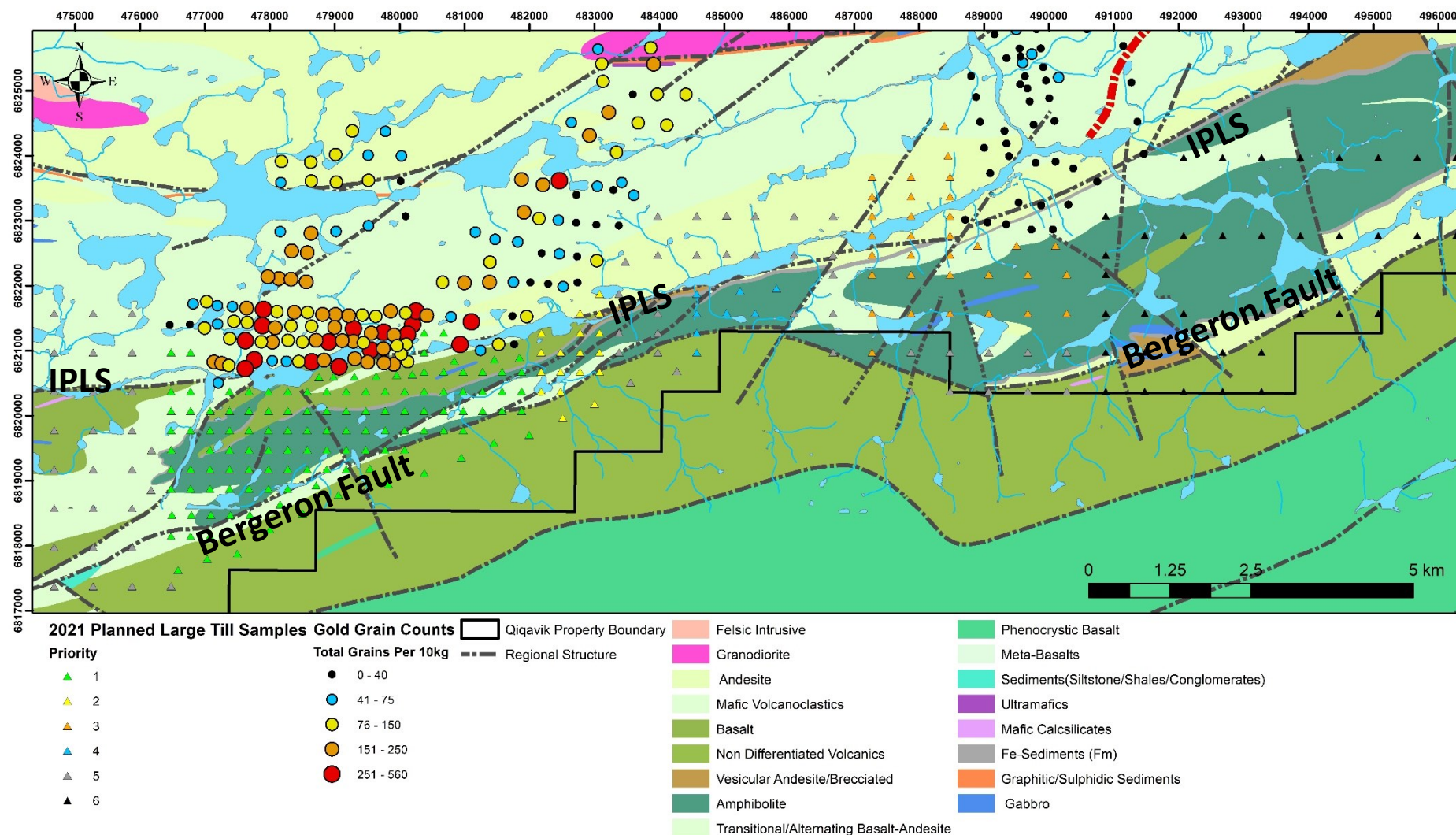


Note that grab samples are selective by nature and values reported may not be representative of mineralized zones

# Qiqavik 2021 Work Proposal

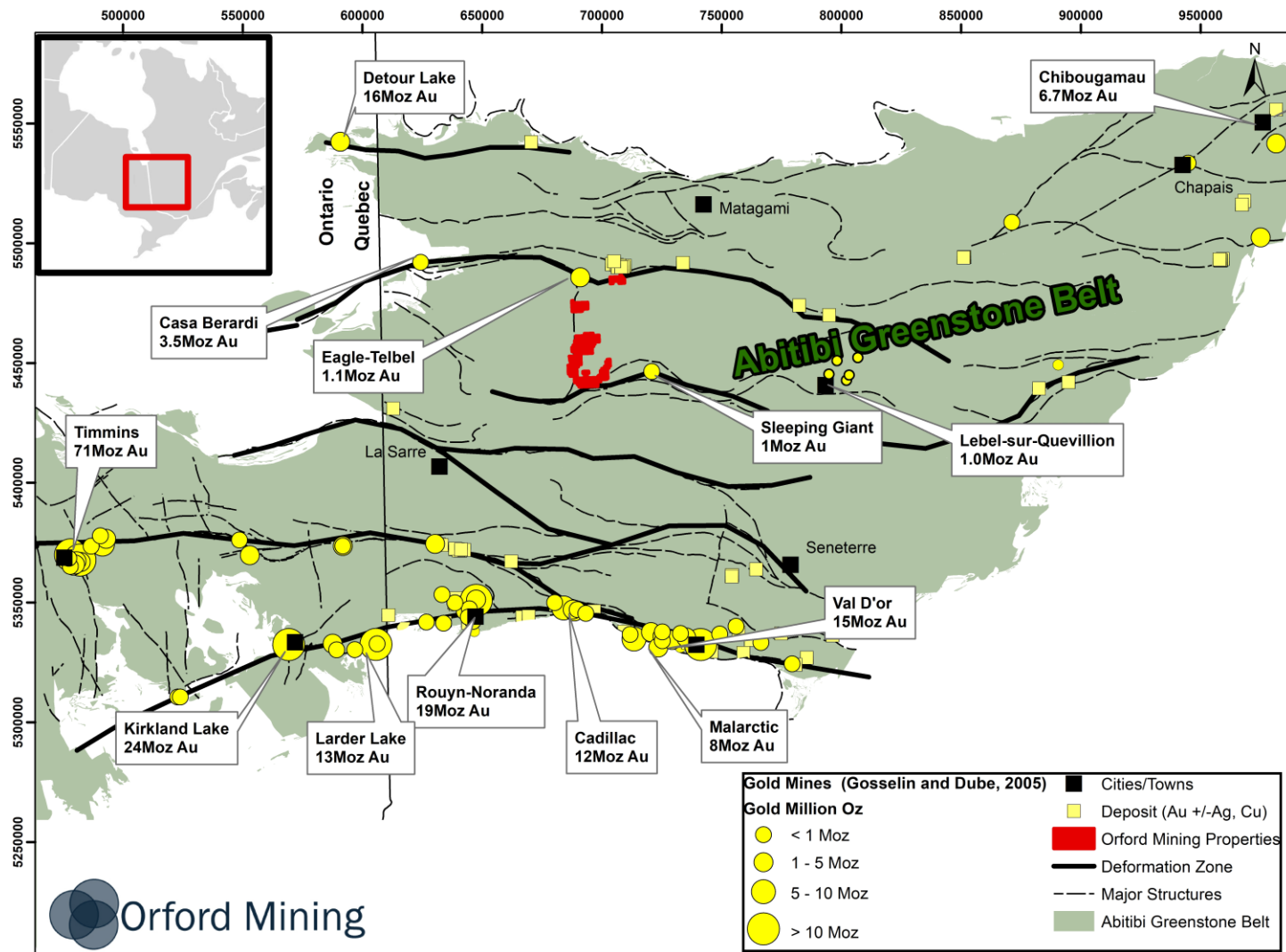
## Geology and Geochemistry

- Focus on infilling large till anomaly south of the IPLS down to the Bergeron fault (Late June) and key areas to the West and East (291 Samples)
- 3 weeks prospecting and mapping starting early July, focused on the IPLS and south towards the Bergeron Fault
- Geophysics on new targets or potential source of the IPLS boulder trains
- 1500m Drilling on IPLS Targets



# Orford Moves into the Abitibi

Research and Compilation identified three properties totalling 209 sq kms in the heart of the Abitibi.

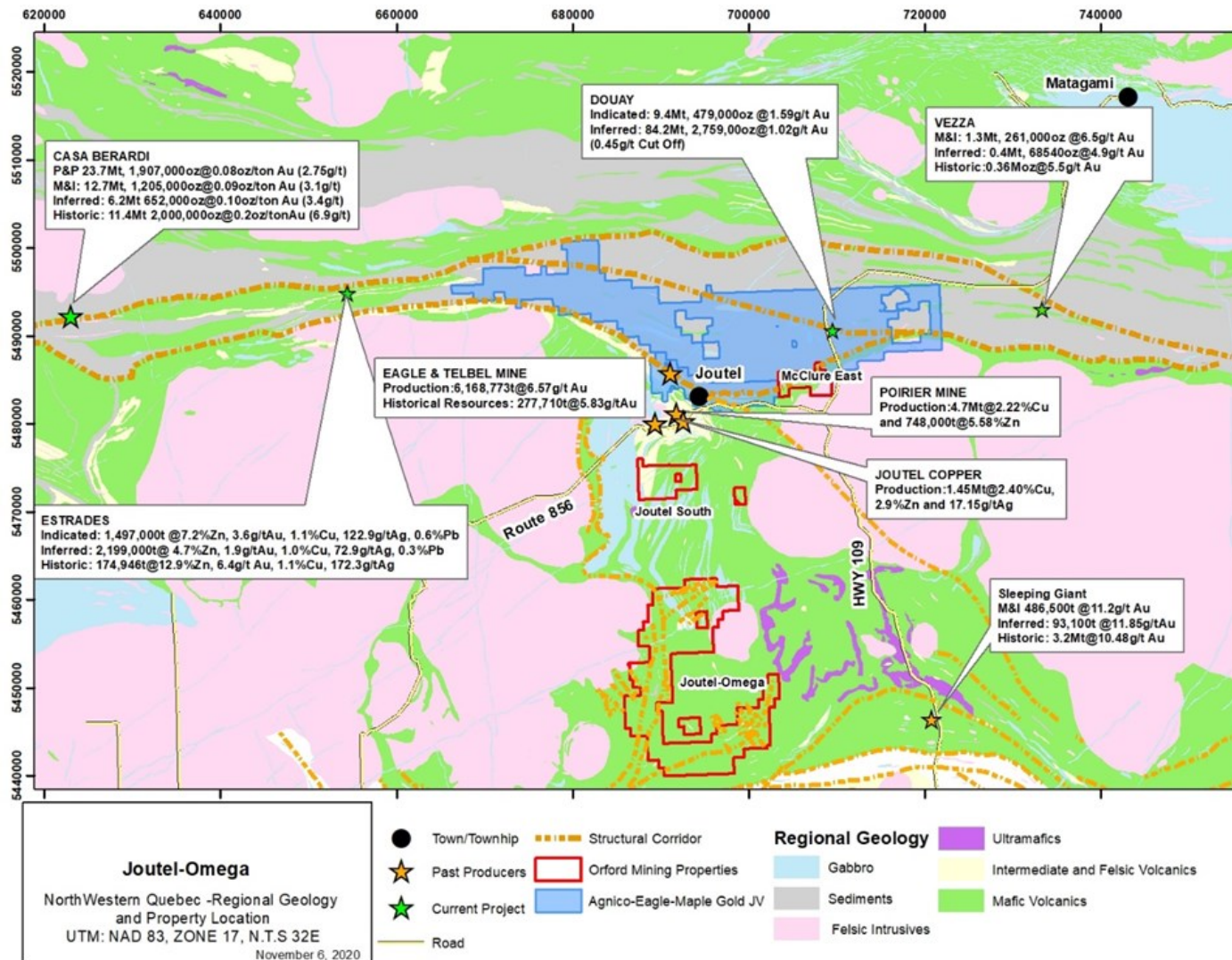


- **McClure East 100%**
  - Situated on the prolific Casa Berardi Structural Zone in close proximity to past producing Eagle –Telbel Gold Mine.
- **Joutel South 100%**
  - Situated in the Joutel Volcanic Complex just south of the past producing Eagle Telbel Gold mines, and number past producing copper mines.
- **Joutel – Omega 100%**
  - Likely one of the least explored areas of the Abitibi, situated along a number of major structures and within the Abtibi greenstone belt

*This information is not necessarily indicative of the mineralization on Orford Mining's properties*

# Joutel Area Staking Acquisitions – 209 Sq Km

Underexplored region - very accessible 100% owned Properties



- **The Joutel South Property** is at the southern underexplored extension of the Joutel felsic volcanic package that hosted both Agnico-Eagle Mines Ltd.'s founding gold mines, Eagle and Telbel, which produced in excess of 1.1Moz of gold<sup>1</sup> and a number of copper assets that have produced 244 Mlbs of copper, 116Mlbs of zinc and 52Mlbs of silver<sup>2</sup>.
- **The McClure East Property** is on the easterly extension of the Casa Berardi structural zone (south splay), which to the west hosts Hecla Mining Ltd's (HL-NYSE) Casa Berardi Mine which has produced 2Moz and has reserves of 3.4M ounces<sup>3</sup> and the nearby Douay Gold Deposit held by Maple Gold Mines (MGM-TSXV) that has 422,000 ounces in indicated and 2,532,000 in inferred resources<sup>4</sup>.
- **Joutel – Omega Property** covers the Vanier-Dalet-Priorier Group (VDP) and the Valerennes Volcanic Group (VVG). The latter is part of the Joutel-Raymond volcanic complex that hosts both Agnico-Eagle Mines Ltd.'s (TSX: AEM)

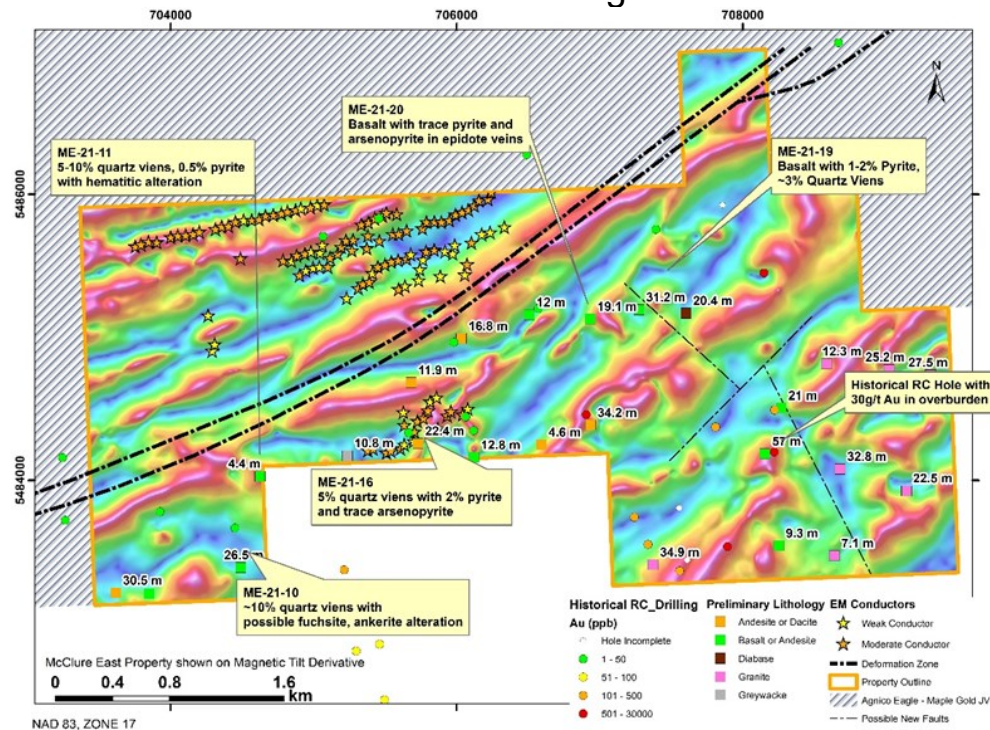
<sup>2</sup>This information from neighboring properties is not necessarily indicative of the mineralization on Orford Mining's properties.

<sup>3,4</sup>Système d'information géomineière of Québec "SIGEOM", *Quebec* Ministry of Energy and Natural Resources. April 20,2020

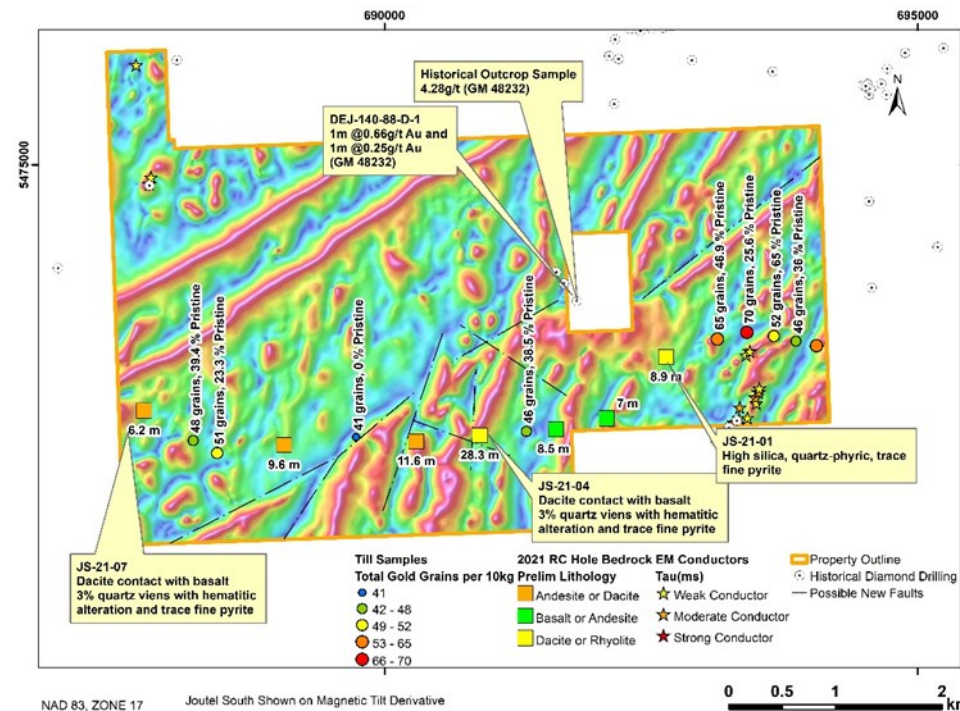
# Joutel Region Properties

## Work Plan 2020-21

- 9 till pits completed on Joutel South in the fall of 2020 using an excavator with gold grain counts.
- Prospectair Geosurveys Inc. performed a 1,118 line-km TDEM and Magnetic survey using the Prospector TDEM system and Geometrics G-822A Airborne Magnetometer systems. The survey was completed in January 2021 at 50 metre line spacing and covers the entire Joutel South and McClure East Properties.
- Seven RC holes on Joutel South and 25 RC holes were completed on McClure East in February and March 2021. The results will be used along with historical data and the recent airborne geophysical survey to identify drill targets.



McClure East



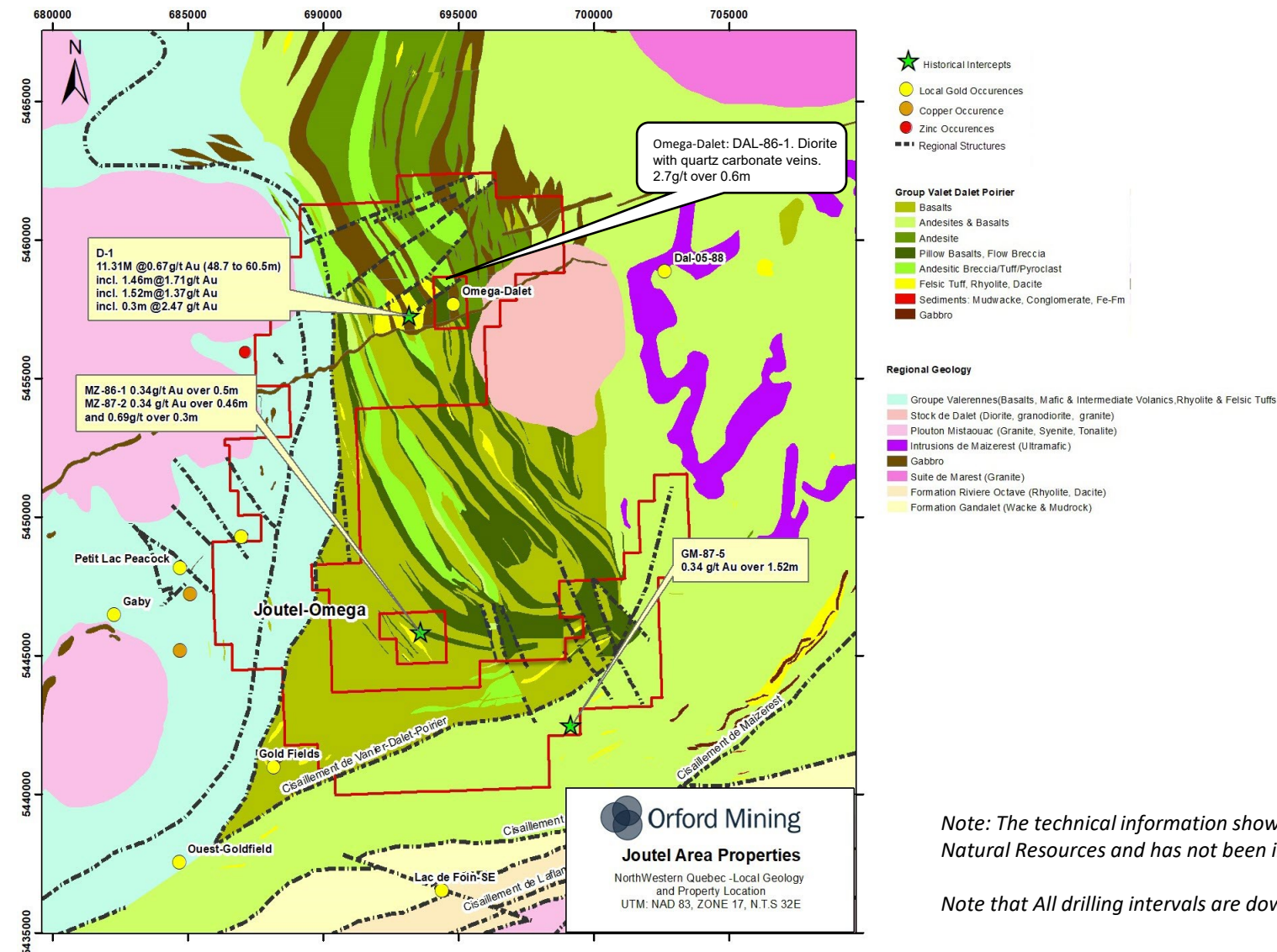
Joutel South

*Note: The historical information shown here obtained from historical work reports filed with the Quebec Ministry of Energy and Natural Resources and has not been independently verified by a Qualified Person as defined by NI 43-101*

*Note that All drilling intervals are down-hole lengths. True thicknesses cannot be estimated with available information*

# Joutel – Omega - 100%

One of the least explored areas of the Abitibi



## Joutel -Omega

- 173 km<sup>2</sup>, staked
- Historical drilling includes hole D-1 which showed several mineralized intervals of up to 11.6m of 0.67g/t Au including higher grade intervals of 1.46m of 1.7g/t Au and other similar intervals
- Compilation ongoing
- No active systematic exploration since the 1980s and mostly since the 1960s
- Property covers key structures and geology.
- The next phase of work to be proposed will likely include geological mapping, ground truthing and glacial till sampling
- An airborne geophysical survey or potentially drone mag and EM survey are likely to follow depending on results of initial work

*Note: The technical information shown was obtained from historical work reports filed with the Quebec Ministry of Energy and Natural Resources and has not been independently verified by a Qualified Person as defined by NI 43-101*

*Note that All drilling intervals are down-hole lengths. True thicknesses cannot be estimated with available information*

### Fostering strong relationships with government, local communities and First Nations Groups

- Orford maintains an open dialog with local communities

#### Nunavik:

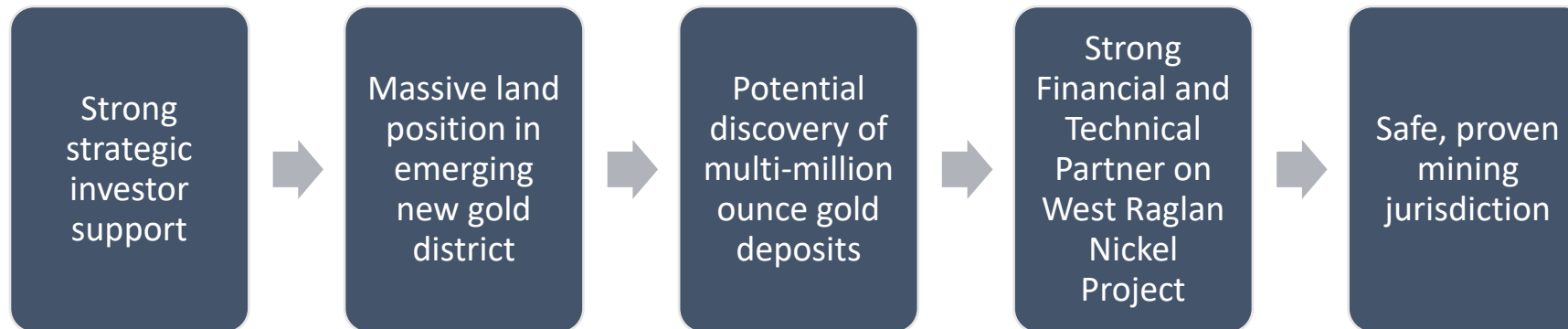
- Representatives of Salluit, Akulivik and Kativik Regional Gov. (KRG) have visited the site
- Working with Landholding Corporations to hire local workforce during summer exploration programs
- Inuit hiring and training in each exploration program.
- 2019, 11% of exploration expenditures were with Nunavik Inuit Enterprises
- Identifying and notifying communities and Avataq of archeological sites
- Provided in-kind support to KRG for abandoned mineral exploration site rehabilitation

#### Joutel Area:

- Open dialogue and regular communication with representatives of the Abitibiwiini (Agent de liaison-secteur minier, Territoire et Environnement, Conseil de la Première Nation Abitibiwiini)
- Hiring and working with local organizations such as Cooperative de Solidarité de Pikogan



**Orford Mining has potentially discovered a new gold district in the highly prospective and underexplored Cape Smith Belt in Northern Quebec**



**Well-funded for Exploration programs on all five properties in 2021, with a total of \$5.7 million to be spent on exploration including Earn in Expenditures by Wyloo on the West Raglan Ni-Cu-PGM Property**



**THANK YOU!**

**David Christie**  
President & CEO  
[dchristie@orfordmining.com](mailto:dchristie@orfordmining.com)  
647-255-8037

**2 St. Clair Avenue West, 18th Floor**  
Toronto, ON  
Canada M4V 1L5  
[www.orfordmining.com](http://www.orfordmining.com)