



Orford Mining

ABITIBI GOLD PROJECTS OVERVIEW



McClure East Property Dec 2020



RC Drill- McClure East Property March 2021

TSXV: ORM
March 3, 2021

Disclaimer

Cautionary Statement Concerning Forward-Looking Statements

Neither the TSXV nor its Regulation Services Provider (as that term is defined in the policies of the TSXV) accepts responsibility for the adequacy or accuracy of this presentation.

This presentation contains "forward-looking information" including without limitation statements relating to the liquidity and capital resources of Orford and potential of one or more of the Qiqavik and West Raglan properties.

Forward-looking statements involve known and unknown risks, uncertainties and other factors which may cause the actual results, performance or achievements of Orford to be materially different from any future results, performance or achievements expressed or implied by the forward-looking statements. Factors that could affect the outcome include, among others: future prices and the supply of metals; the results of drilling; inability to raise the money necessary to incur the expenditures required to retain and advance the properties; environmental liabilities (known and unknown); general business, economic, competitive, political and social uncertainties; accidents, labour disputes and other risks of the mining industry; political instability, terrorism, insurrection or war; or delays in obtaining governmental approvals, failure to obtain regulatory or shareholder approvals. For a more detailed discussion of such risks and other factors that could cause actual results to differ materially from those expressed or implied by such forward-looking statements, refer to Orford's filings with Canadian securities regulators available on SEDAR at www.sedar.com.

Although Orford has attempted to identify important factors that could cause actual actions, events or results to differ materially from those described in forward-looking statements, there may be other factors that cause actions, events or results to differ from those anticipated, estimated or intended. Forward-looking statements contained herein are made as of the date of this presentation and Orford disclaims any obligation to update any forward-looking statements, whether as a result of new information, future events or results or otherwise, except as required by applicable securities laws.

The TSXV has neither approved nor disapproved the contents of this presentation.

Qualified Person and Quality Assurance and Quality Control

The disclosure of scientific and technical information contained in this presentation has been approved by Alger St-Jean, P.Geo, Chief Geoscientist of Orford, a Qualified Person under NI 43-101.

Samples reported in this presentation and indicated as grab, outcrop, sub-outcrop, boulders and float are grab samples. Grab samples are selective by nature and values reported may not be representative of mineralized zones. All drill intervals reported in this presentation are down-hole core lengths as true thicknesses cannot be determined with available information.

The work program at Qiqavik was supervised by Alger St-Jean, P.Geo, Chief Geoscientist who is responsible for all aspects of the work, including the quality control/quality assurance program. On-site personnel at the project log and weigh all samples prior to sealing and shipping. Shipments were flown by chartered aircraft from Camp Chukotat to Rouyn-Noranda. Logistics contractor (Outland) secured the sample shipments in a storage area at the airport before being delivered by ground transportation to SGS Minerals preparation facility in Val-d'Or, Quebec. A pulp fraction of all the samples was afterward sent to SGS Minerals facility in Lakefield, Ontario for the gold and multi-element analysis. Analytical methods Sample preparation for core and grab samples were completed at SGS Minerals preparation facility in Val d'Or, Quebec using the conventional preparation method G_PRP89. The samples were recorded in a tracking system, weighted, dried if needed and crushed at 75% passing 2 mm. A fraction of 250 g is then pulverized at 85% passing 75 microns. A fraction of the pulp was then shipped to SGS Minerals facility in Lakefield, Ontario to be analyzed for gold by lead oxide collection fire assay with an atomic absorption finish on a 50 g nominal weight (SGS Minerals method GE_FAA515) and with a gravimetric finish on a 50 g nominal weight (SGS Minerals method GE_FAG505) when the previous value was above the limit of detection. The samples were then analyzed on 33 elements for multi-elements with a 4-acid digestion method with an ICP-OES finish (SGS Minerals method GE_ICP40B). Elements where the value was assayed above the detection limit was analyzed with a peroxide fusion method with an ICP-OES finish (SGS Minerals method GE_ICP90A). Standards and blanks are inserted at a minimum of 10% and 5% for core and grab samples respectively for QA/QC purposes in addition to those inserted by the lab. A subset of samples has not yet been sent for a verification assay at another lab. Both preparation and geochemical analysis of Orford Mining samples were completed at SGS Minerals facilities. The quality management system of SGS Minerals is accredited by the Standard Council of Canada (SCC). In addition, all Canadian laboratories of SGS Minerals are accredited by the ISO and International Electrotechnical Commission ("IEC") 17025.

Qiqavik Large Till Samples: Approximately 5-7kg of undisturbed frost boil material was collected using plastic shovels, and bagged with plastics bag on the Qiqavik Property. Till Samples were sent by air charter and air cargo to IOS Geoscientific for gold grain counting using their ARTGold™ process. Gold grain counts presented are normalized to 10kg of material.

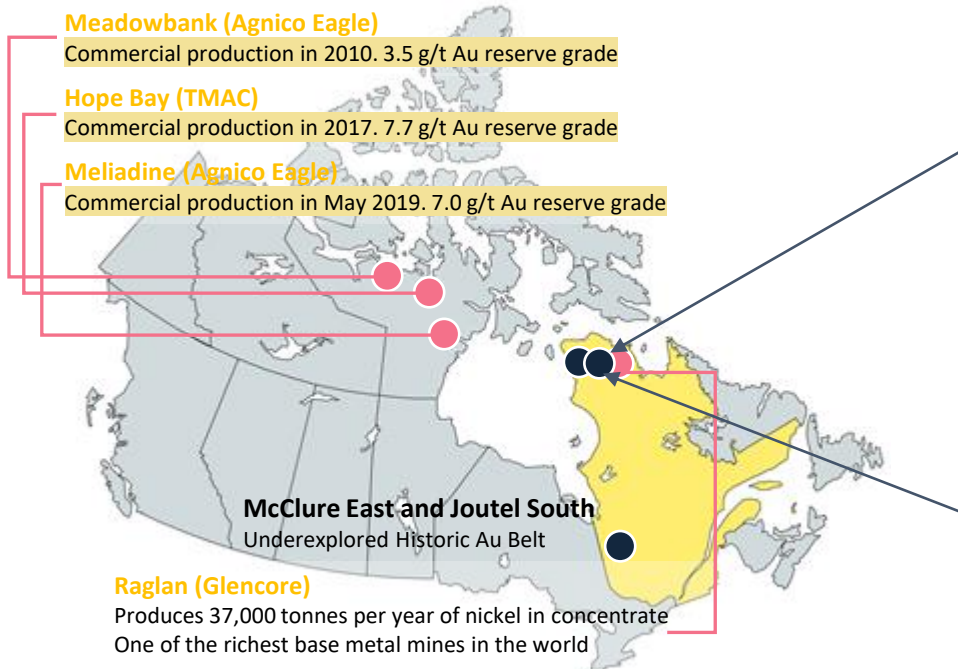
Joutel South Till Samples: An excavator was used to dig small pits. Approximately 10kg of till material was collected from the layer of till beneath the lacustrine clay layer. Till Samples were sent by air charter and air cargo to IOS Geoscientific for gold grain counting using their ARTGold™ process. Gold grain counts presented are normalized to 10kg of material.

The technical information disclosed herein in respect of the Qiqavik Property is based on the independent report of Clement Dombrowski, P.Geo and Sylvain Desbiens P.Geo. titled "NI 43-101 Technical Report on Qiqavik Project, Northern Quebec, Canada" effective September 14, 2017, and on Orford Mining's press releases available on SEDAR. The information disclosed herein in respect of the West Raglan Property is based on the independent report of Clement Dombrowski, P.Geo. titled "NI 43-101 Technical Report on West Raglan Project, Northern Quebec, Canada" effective February 20, 2017.

Project Portfolio –Large Regional Properties

Focused on underexplored area of Quebec

Over 1,204 km² land position in the highly prospective and underexplored Cape Smith Belt and 209 km² in the heart of the Quebec Abitibi
Quebec is consistently viewed as one of the most attractive jurisdictions from a mining investment point of view



Qiqavik Project (Au)(100%)

- Camp Scale Property with more than 12 high grade gold showings at surface in an previously unexplored part of the Cape Smith Belt
- New Potential Gold Camp with Opportunity to host multiple deposits
- Early Stage Exploration- Less than 5 months of field work

West Raglan Project (Ni, Cu, PGE's)(100% Interest)

- Wyloo Metals Pty Ltd. has entered an earn in agreement with Orford to earn up to a 80% interest by spending \$25 million amongst other items.
- ~663 km² property in the lower Cape Smit Belt Covering the stratigraphy of the North (Raglan Trend) and South (Nunavik Nickel) ultramafic Trends
- Advanced Exploration: Traced outcropping sulphide mineralization over +35 km strike
- Frontier Zone: identified five high-grade (2-3% Ni, 3+ g/t PGE) mineralized lens clusters over a 2,500 m strike (comparable geology to Glencore's Raglan Mine)

Royalties

- Owns a 3.5% NSR on the Falan property (Malabar Gold Corp.) and a 2% NSR on the Santa Ana property (Outcrop Gold Corp.) both in the Mariquita Silver district of Columbia. This district was one of Colombia's most prolific colonial silver camps.

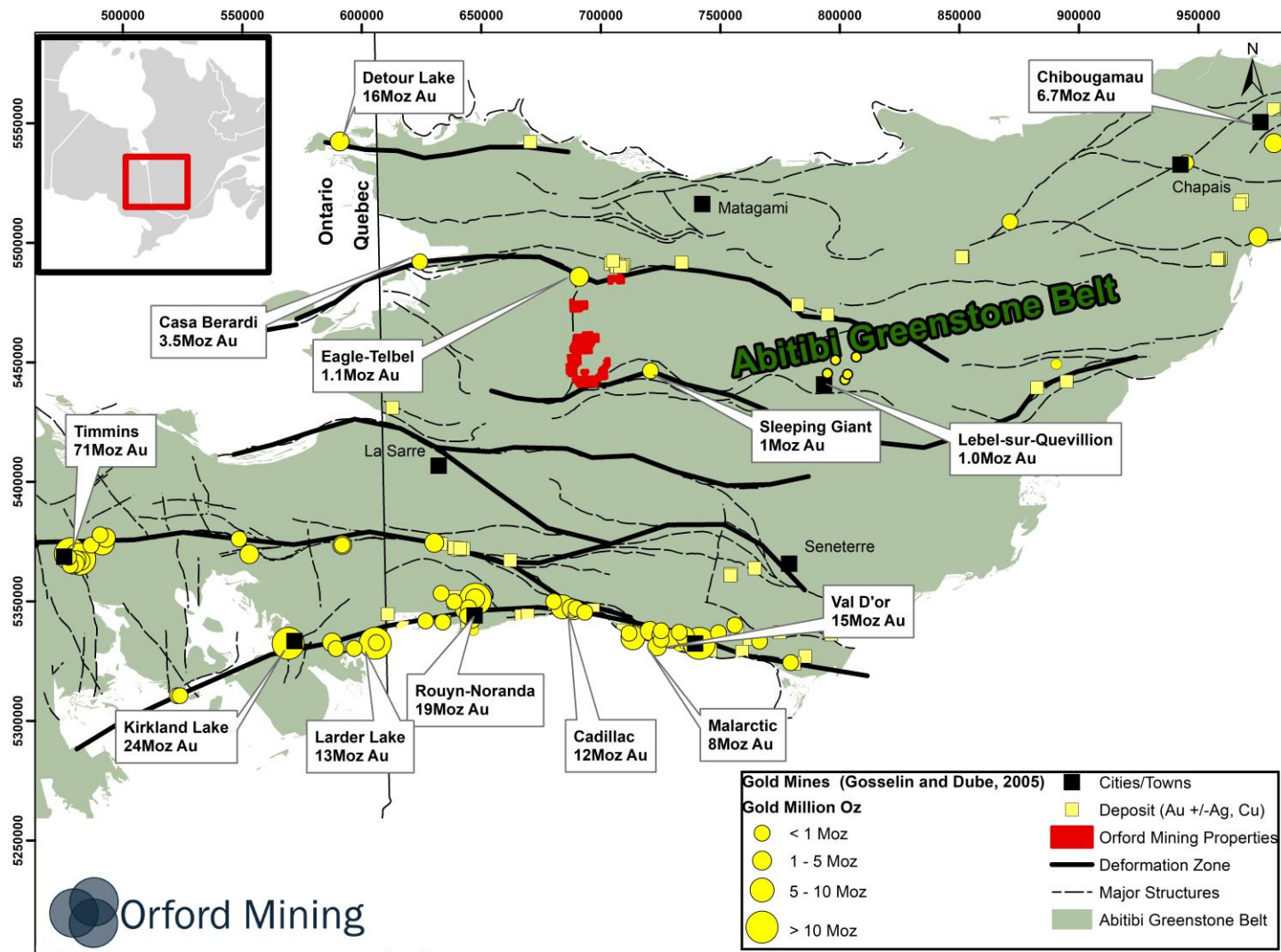
McClure East, Joutel South and Joutel Omega (Au) (100%)

- Located in the prolific gold mineralized Casa Berardi /Joutel Structures, in the heart of the Abitibi region (accessible by road)
- Area last saw exploration in the early 1990's.
- Properties are the underexplored extension of the Joutel trend that hosted both Agnico-Eagle Mines Ltd.'s (AEM-T) founding gold mine Eagle/Telbel which produced in excess of 1.1Moz of gold and a number of copper assets that have produced 244 Mlbs of copper, 116Mlbs of Zinc and 52Mlbs of silver¹

1. (Système d'information géominère of Québec "SIGEOM", Quebec Ministry of Energy and Natural Resources. April 20,2020)

Orford Moves into the Abitibi

Research and Compilation identified three properties totalling 209 sq kms in the heart of the Abitibi.

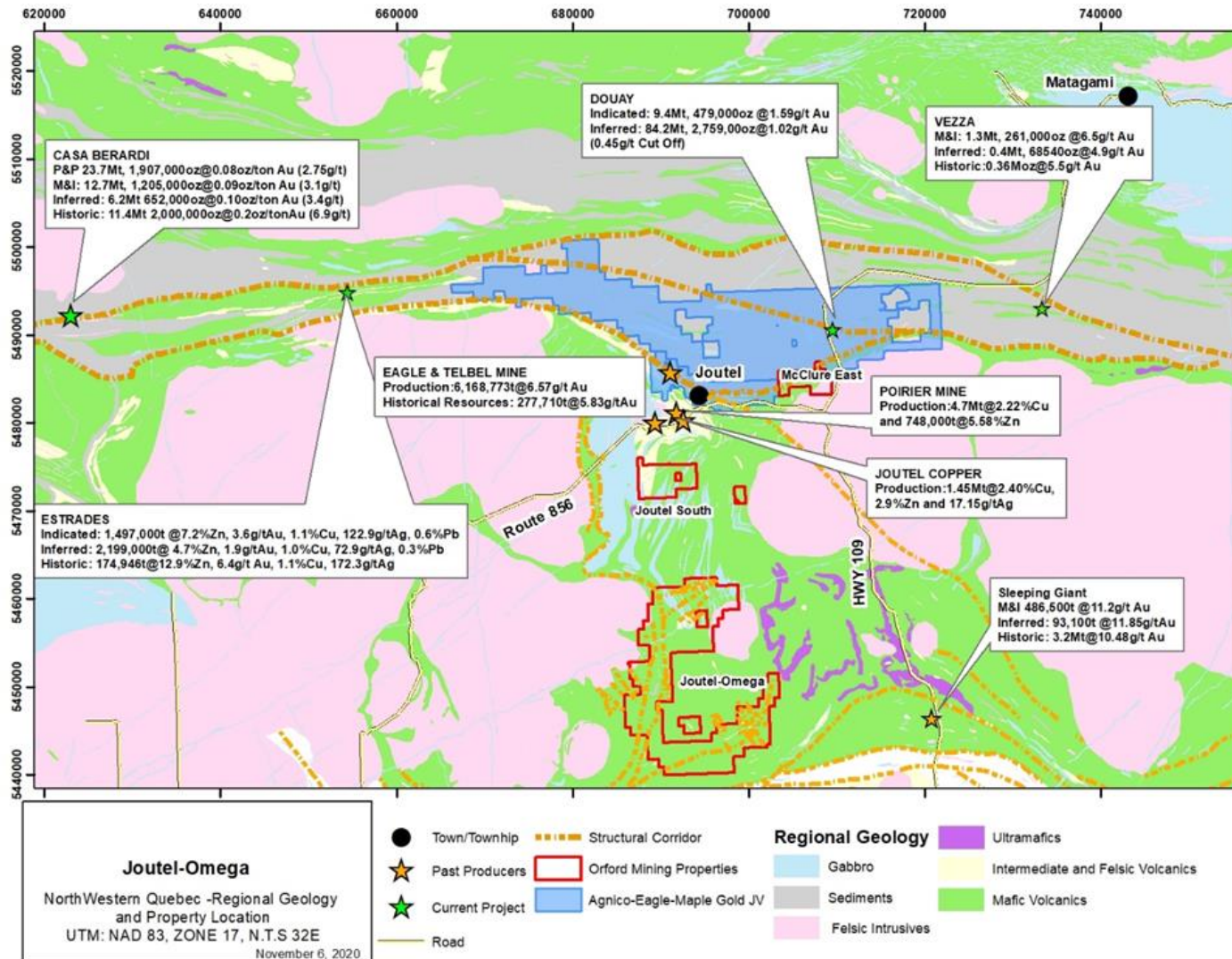


- **McClure East 100%**
 - Situated on the prolific Casa Berardi Structural Zone in close proximity to past producing Eagle –Telbel Gold Mines.
- **Joutel South 100%**
 - Situated in the Joutel Volcanic Complex just south of the past producing Eagle Telbel Gold mines, and number past producing copper mines.
- **Joutel – Omega 100%**
 - Likely one of the least explored areas of the Abitibi, situated along a number of major structures and within the Abitibi greenstone belt

This information is not necessarily indicative of the mineralization on Orford Mining's properties

Joutel Area Staking Acquisitions – 209 Sq Km

Underexplored region - very accessible 100% owned Properties



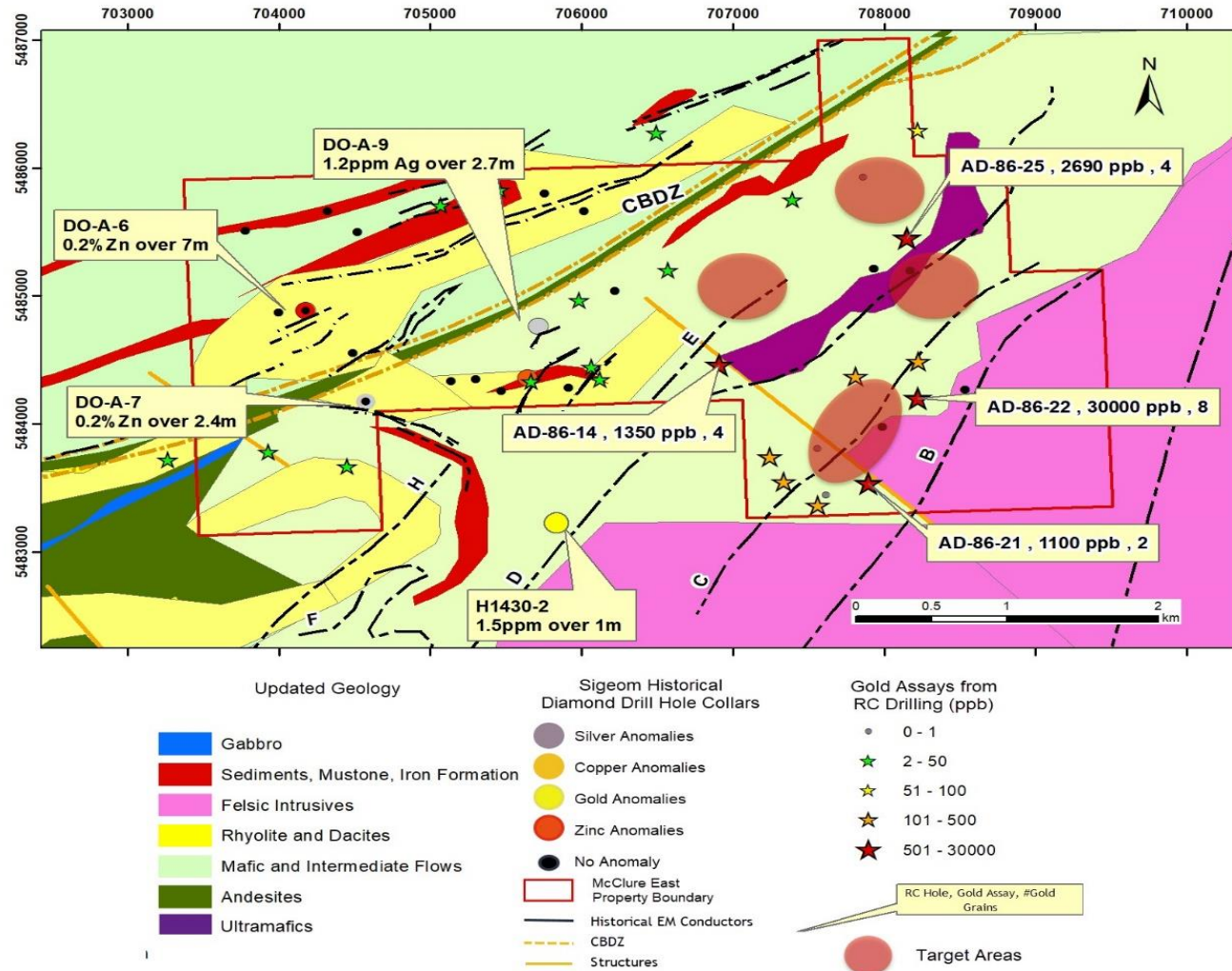
- **The Joutel South Property** is at the southern underexplored extension of the Joutel felsic volcanic package that hosted both Agnico-Eagle Mines Ltd.'s founding gold mines, Eagle and Telbel, which produced in excess of 1.1Moz of gold¹ and a number of copper assets that have produced 244 Mlbs of copper, 116Mlbs of zinc and 52Mlbs of silver².
- **The McClure East Property** is on the easterly extension of the Casa Berardi structural zone (south splay), which to the west hosts Hecla Mining Ltd's (HL-NYSE) Casa Berardi Mine which has produced 2Moz and has reserves of 3.4M ounces³ and the nearby Douay Gold Deposit held by Maple Gold Mines (MGM-TSXV) that has 422,000 ounces in indicated and 2,532,000 in inferred resources⁴.
- **Joutel – Omega Property** covers the Vanier-Dalet-Priorier Group (VDP) and the Valerennes Volcanic Group (VVG). The latter is part of the Joutel-Raymond volcanic complex that hosts both Agnico-Eagle Mines Ltd.'s (TSX: AEM) founding gold mines, Eagle and Telbel.

²This information from neighboring properties is not necessarily indicative of the mineralization on Orford Mining's properties.

^{3,4}Système d'information géomineière of Québec "SIGEOM", *Quebec* Ministry of Energy and Natural Resources. April 20,2020

Joutel Region – McClure East – 100%

Compilation points to untested potential



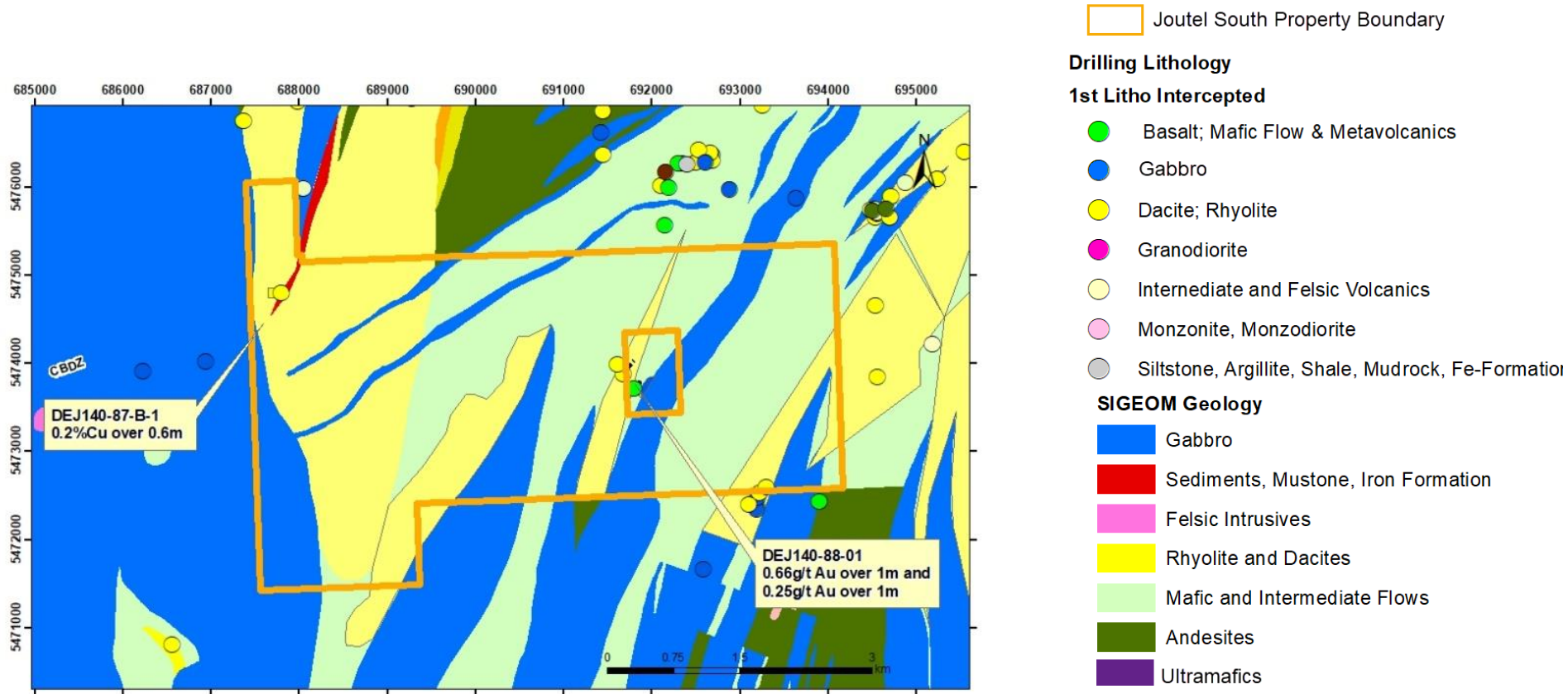
- RC Drilling from historical data on the property indicated anomalous area on eastern part of the McClure East property, up to 30,000 ppb and 8 grains of gold in overburden material.
- No follow up on this historical work, area was abandoned late 1980s/early 1990s

Note: The technical information shown was obtained from historical work reports filed with the Quebec Ministry of Energy and Natural Resources and has not been independently verified by a Qualified Person as defined by NI 43-101

Note that All drilling intervals are down-hole lengths. True thicknesses cannot be estimated with available information

Joutel South – 100%

Extremely Under-Explored. Re-Interpretation increasing prospectivity



Note: The technical information shown was obtained from historical work reports filed with the Quebec Ministry of Energy and Natural Resources and has not been independently verified by a Qualified Person as defined by NI 43-101

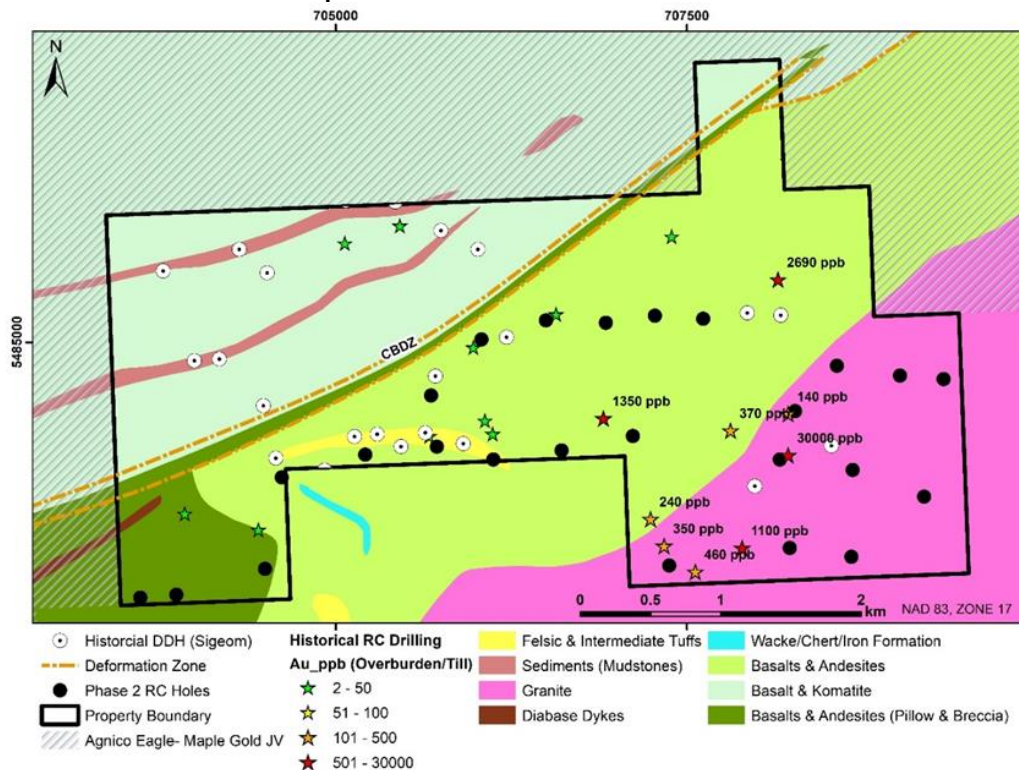
Note that All drilling intervals are down-hole lengths. True thicknesses cannot be estimated with available information

Historical Drilling indicates that the felsic volcanic package to the north hosting the historic Telbel and Eagle Mines folds southward onto the Joutel South property

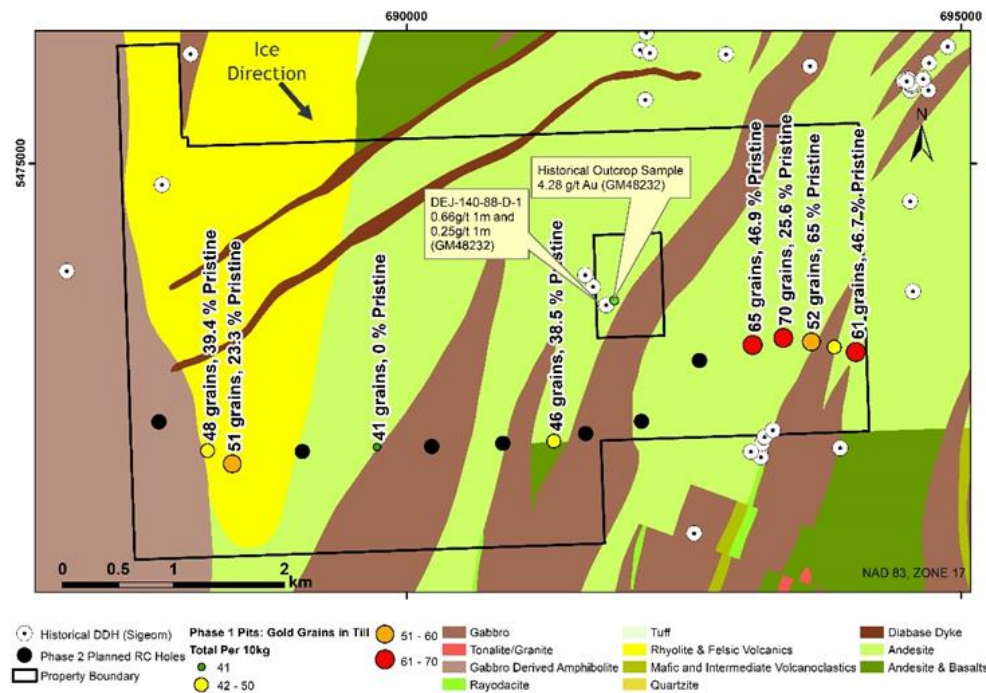
Joutel South and McClure East Properties

Work Plan 2020-21

- 9 till pits completed on Joutel South in the fall of 2020 using an excavator with gold grain counts.
- Prospectair Geosurveys Inc. preformed a 1,118 line-km TDEM and Magnetic survey using the Prospector TDEM system and Geometrics G-822A Airborne Magnetometer systems. The survey was completed in January 2021 at 50 metre line spacing and covers the entire Joutel South and McClure East Properties.
- Seven RC holes are planned on Joutel South and 18 RC holes are planned on McClure East- Ongoing will be completed Mid-March 2021. The results will be used along with historical data and the recent airborne geophysical



McClure East



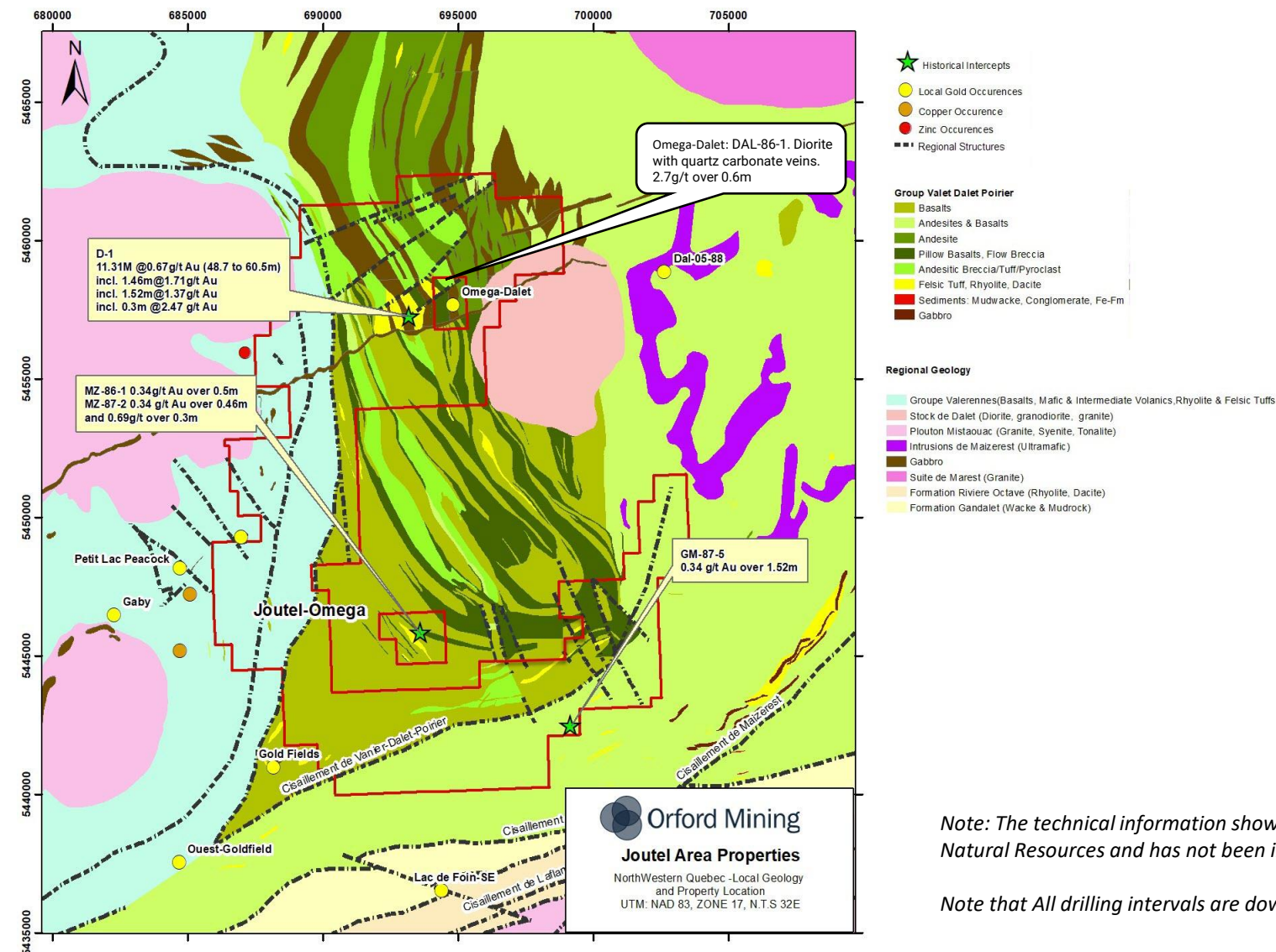
Joutel South

Note: The technical information shown was obtained from historical work reports filed with the Quebec Ministry of Energy and Natural Resources and has not been independently verified by a Qualified Person as defined by NI 43-101

Note that All drilling intervals are down-hole lengths. True thicknesses cannot be estimated with available information

Joutel – Omega - 100%

One of the least explored areas of the Abitibi



Joutel -Omega

- 173 km², staked
- Historical drilling includes hole D-1 which showed several mineralized intervals of up to 11.6m of 0.67g/t Au including higher grade intervals of 1.46m of 1.7g/t Au and other similar intervals
- Compilation ongoing
- No active systematic exploration since the 1980s and very little since the 1960s
- Property covers key structures and geology.
- The next phase of work to be proposed will likely include geological mapping, ground truthing and glacial till sampling
- An airborne geophysical Mag and EM survey are likely to follow depending on results of initial work

Note: The technical information shown was obtained from historical work reports filed with the Quebec Ministry of Energy and Natural Resources and has not been independently verified by a Qualified Person as defined by NI 43-101

Note that All drilling intervals are down-hole lengths. True thicknesses cannot be estimated with available information



THANK YOU!

David Christie
President & CEO
dchristie@orfordmining.com
647-255-8037

2 St. Clair Avenue West, 18th Floor
Toronto, ON
Canada M4V 1L4
www.orfordmining.com